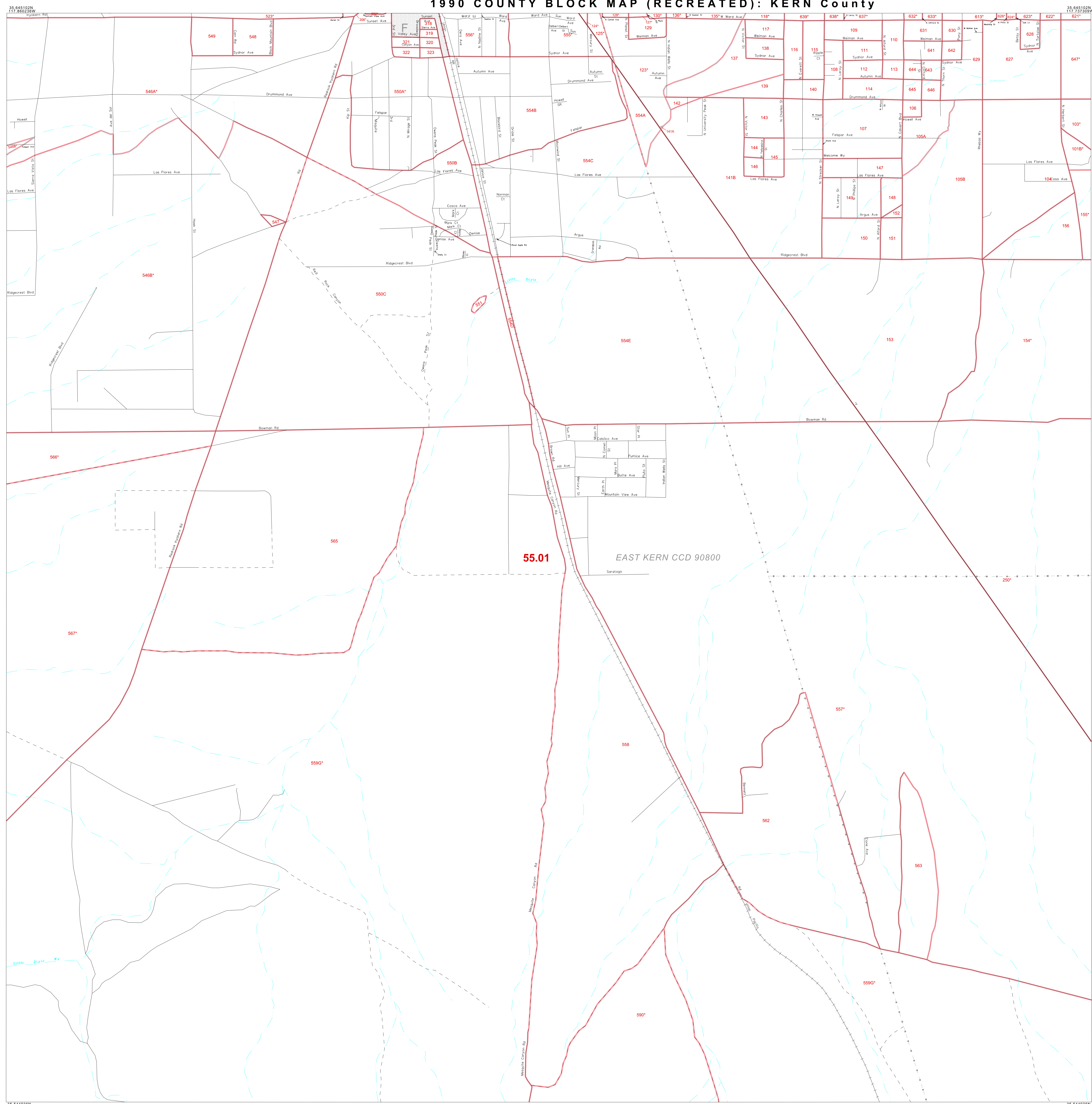


# 1990 COUNTY BLOCK MAP (RECREATED): KERN County



### LEGEND

SYMBOL	NAME STYLE
☆☆☆☆	INTERNATIONAL
☆☆☆☆	AIR
☆☆☆☆	Trust Land
☆☆☆☆	TJSA / TDSA / ANVSA
☆☆☆☆	ANRC
□□□□	MINOR CIVIL DIV <sup>1</sup> / CCD
□□□□	Place within Subject Entity
□□□□	Incorporated Place / CDP <sup>1</sup>
□□□□	Place outside of Subject Entity
□□□□	Incorporated Place / CDP <sup>1</sup>
—	Census Tract / BNA <sup>2</sup>
—	BLOCK <sup>3</sup>

**ABBREVIATION REFERENCE:** AIR = American Indian Reservation; Trust Land = Off-Reservation Trust Land; TDSA = Tribal Jurisdiction Statistical Area; TJSA = Tribal Designated Statistical Area; ANVSA = Alaska Native Village Statistical Area; ANRC = Alaska Native Regional Corporation; CCD = Census Civil Division; CDP = Census Designated Place; BNA = Block Numbering Area.

### FEATURES

Highway	Pipe/Paver Line	Stream/Shoreline
Secondary Road	Ridge/Physical Feature	Intermittent Stream
Deep Trench/Warehouse/Ferry	Property/Fence Line	River
Railroad	Nonvisible Boundary	Canal

Where international, state, and/or county boundaries coincide, the map shows the boundary symbol for only the highest-ranking of these boundaries.

<sup>1</sup> A "\*" following a place name indicates that the place is also a false MCD; the false MCD name is not shown.

<sup>2</sup> In 1990, the census-of-vessels population of ships at sea was allocated to census tracts with a "SP" suffix. An anchor symbol appeared on the 1990 maps locating a census-of-vessels tract. These maps show a very small area symbolized as a census tract with the census tract number shown near the area.

<sup>3</sup> A "\*" following a block number indicates that the block number is repeated elsewhere in the block.

35 44 51 02 N  
117 46 02 38 W

The plotted map scale is 1:15000

35 44 51 02 N  
117 45 30 00 W

ENTITY TYPE: County  
NAME: Kern County (029)  
ST: California (08)

1990 COUNTY BLOCK MAP (RECREATED)  
(PWRDLK) 19506029062000000000

Key to Adjacent Sheets

40	41	42
61	62	63
82	83	84

Sheet Location within Entity

SHEET 62 OF 201 PARENT SHEETS  
TOTAL SHEETS: 295 (Index 1; Parent 201; Inset 93)