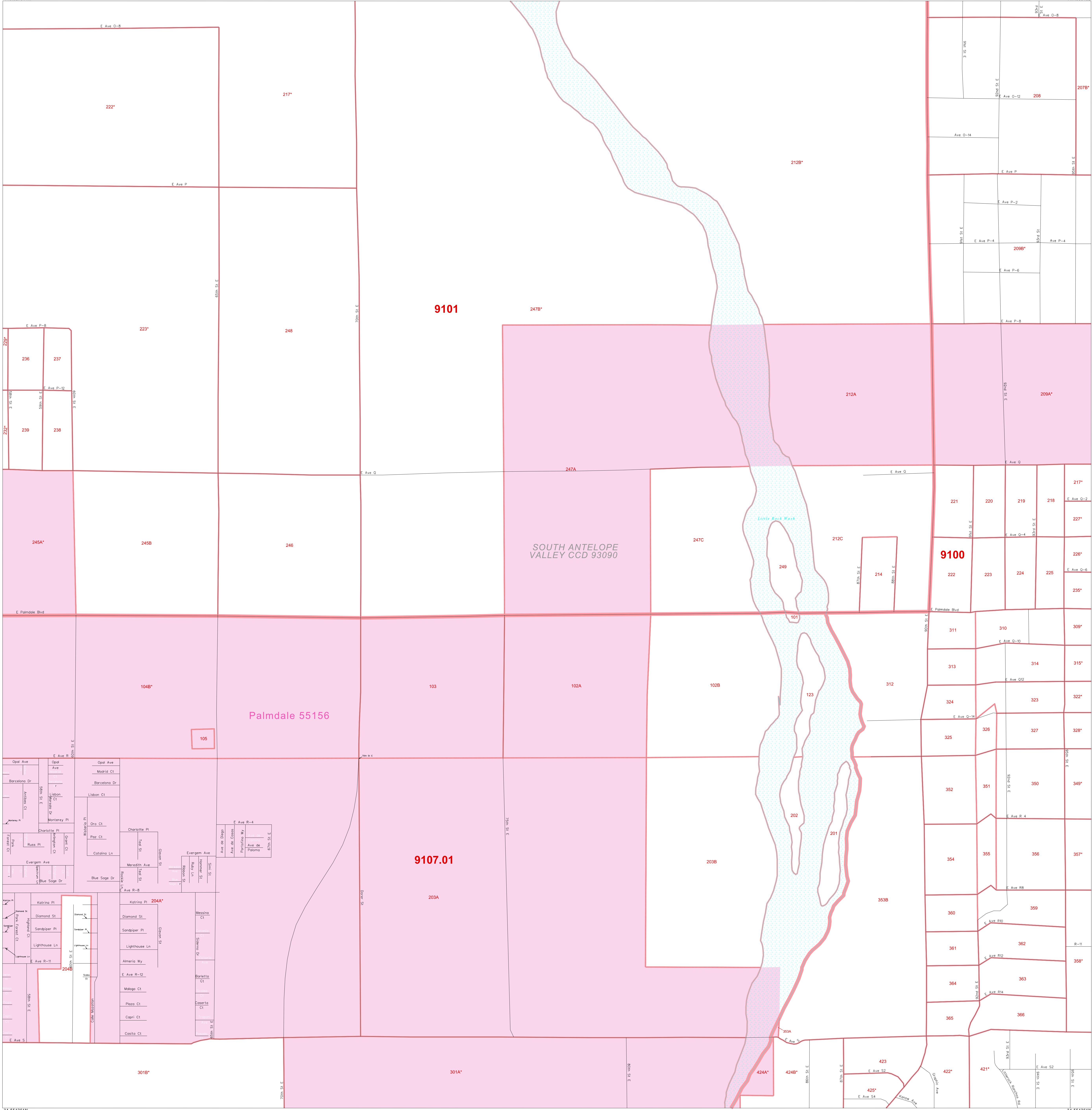


1990 COUNTY BLOCK MAP (RECREATED): LOS ANGELES County

34 611063N
118 027014W

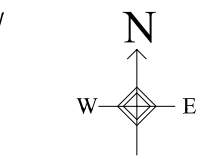
34 611063N
117 999102W



LEGEND
SYMBOL NAME STYLE
INTERNATIONAL
AIR
Trust Land
TJSA / TDSA / ANVSA
ANRC
MINOR CIVIL DIV' / CCD
Place within Subject Entity
Incorporated Place / CDP 1
Place outside of Subject Entity
Census Tract / BNA 2
BLOCK 3
ABBREVIATION REFERENCE: AIR = American Indian Reservation; Trust Land = Off-Reservation Trust Land; TDSA = Tribal Jurisdiction Statistical Area; TJSA = Tribal Designated Statistical Area; ANVSA = Alaska Native Village Statistical Area; ANRC = Alaska Native Regional Corporation; CCD = Census Civil Division; CDP = Census Designated Place; BNA = Block Numbering Area
FEATURES
Highway
Secondary Road
Deep Trench/Warehouse/Ferry
Railroad
Nonvisible Boundary
Pipe/Paver Line
Ridge/Physical Feature
Property/Fence Line
Nonvisible Boundary
Stream/Shoaring
Intermittent Stream
River
Creeper
Inset
Out Area

34 644201N
118 027014W

34 644201N
117 999102W



The plotted map scale is 1:8500

ENTITY TYPE: County
NAME: Los Angeles County (037)
ST: California (08)

Key to Adjacent Sheets
69 70 71
87 88 89
104 105 106
Sheet Location within Entity

SHEET 88 OF 329 PARENT SHEETS
TOTAL SHEETS: 397 (Index 1; Parent 329; Inset 67)

All legal boundaries and names are as of January 1, 1990 as tabulated for the Public Law 94-171 and Summary Tape File products. The boundaries also reflect the feature network and coordinates as of the Census 2000 geographic base. Since 1990 the Census Bureau updated the base from the North American Datum of 1927 (NAD27) to the datum as of 1983 (NAD83) and made numerous updates to the base features from those depicted in 1990. The boundaries shown on this map are for the Census Bureau's statistical data collection and tabulation purposes only; their depiction and designation for statistical purposes does not constitute a determination of jurisdictional authority or rights or ownership or entitlement. Source: U.S. Census Bureau's TIGER database (Census 2000) Projection: State-based Albers' Equal Area U.S. DEPARTMENT OF COMMERCE Economics and Statistics Administration U.S. Census Bureau

