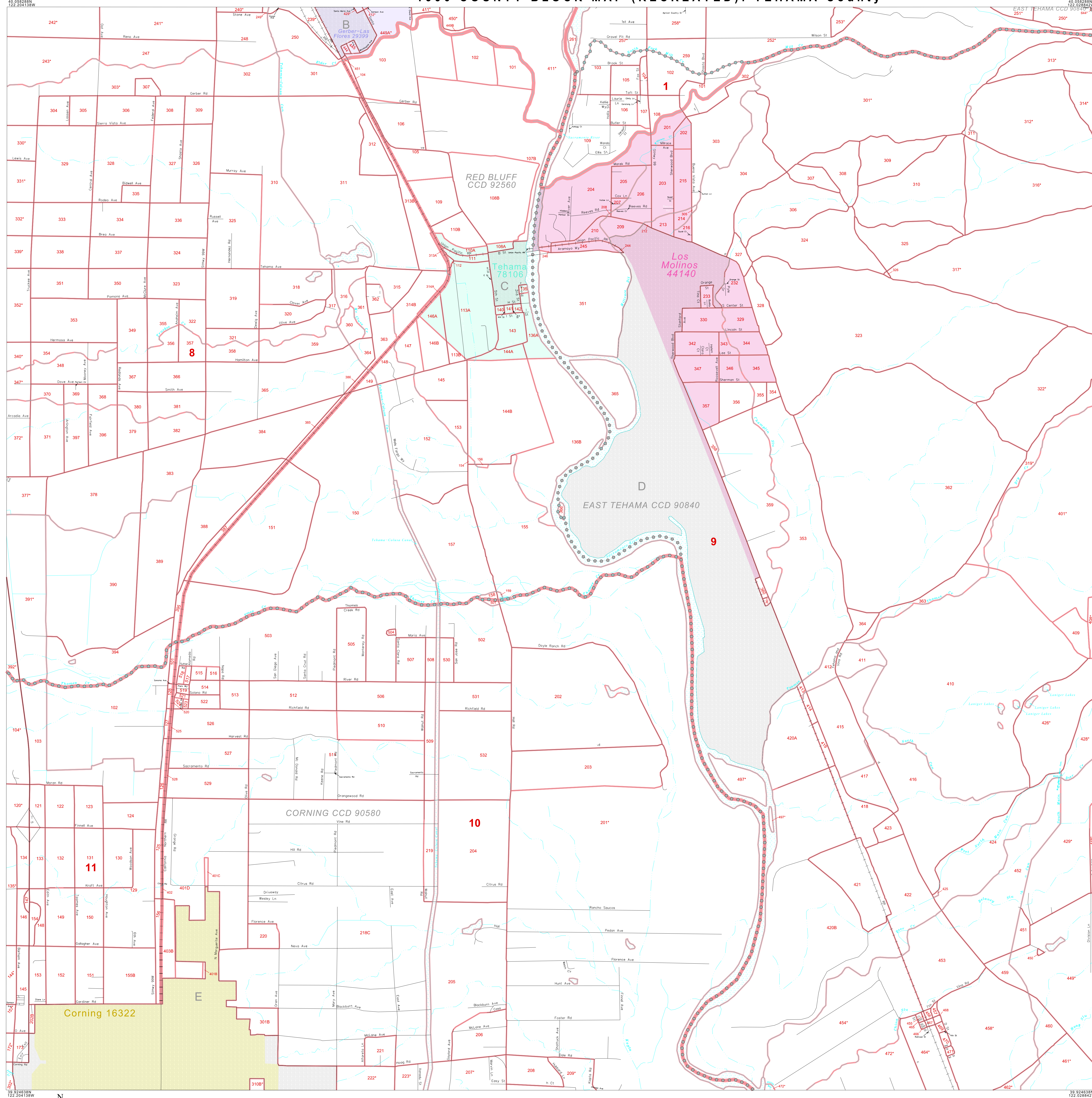


1990 COUNTY BLOCK MAP (RECREATED): TEHAMA County



LEGEND

SYMBOL NAME STYLE

***** INTERNATIONAL

***** AIR

***** Trust Land

***** TUSA / TDSA / ANVSA

***** ANRC

MINOR CIVIL DIV' / CCD

Place within Subject Entity

Incorporated Place / CDP¹

Place outside of Subject Entity

Census Tract / BNA²

BLOCK³

ABBREVIATION REFERENCE: AIR = American Indian Reservation; Trust Land = Off-Reservation Trust Land; TUSA = Tribal Jurisdiction Statistical Area; TDSA = Tribal Designated Statistical Area; ANVSA = Alaska Native Village Statistical Area; ANRC = Alaska Native Regional Corporation; CCD = Census Civil Division; CDP = Census Designated Place; BNA = Block Numbering Area

FEATURES

Highway

Secondary Road

Deep Trench/Waterway/Ferry

Railroad

Ridge/Physical Feature

Property/Fence Line

Nonvisible Boundary

Stream/Shoreline

Intermittent Stream

River

Glacier

Inset

Out Area

Where international, state, and/or county boundaries coincide, the map shows the boundary symbol for only the highest-ranking of these boundaries.

¹ A "*" following a place name indicates that the place is also a false MCD; the false MCD name is not shown.

² In 1990, the crew-of-vessel population of ships at sea was allocated to census tracts with a "00" suffix. An anchor symbol appeared on the 1990 maps locating a crew-of-vessel tract. These maps show a very small area symbolized as a census tract with the census tract number shown near the area.

³ A "*" following a block number indicates that the block number is repeated elsewhere in the block.

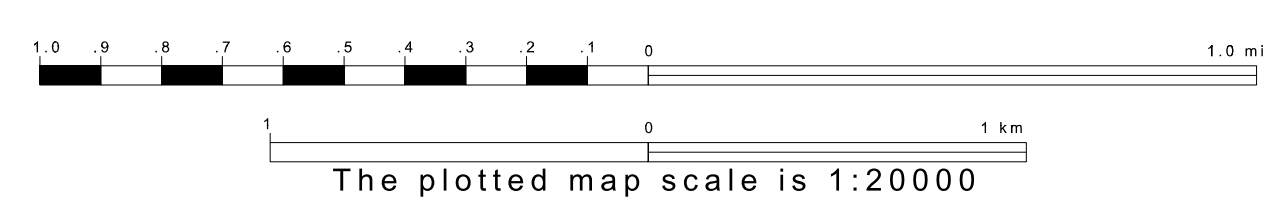
Key to Adjacent Sheets

24	25	26
34	35	36
43	44	45

Sheet Location within Entity

SHEET 35 OF 46 PARENT SHEETS
TOTAL SHEETS: 57 (Index 1; Parent 46; Inset 10)

All legal boundaries and names are as of January 1, 1990 as tabulated for the Public Law 94-171 and Summary Tape File products. The boundaries also reflect the feature network and coordinates as of the Census 2000 geographic base. Since 1990 the Census Bureau updated the base from the North American Datum of 1927 (NAD27) to the datum as of 1983 (NAD83) and made numerous updates to the base features from those depicted in 1990. The boundaries shown on this map are for the Census Bureau's statistical data collection and tabulation purposes only; their depiction and designation for statistical purposes does not constitute a determination of jurisdictional authority or rights or ownership or establishment. Source: U.S. Census Bureau's TIGER database (Census 2000) Projection: State-based Albers's Equal Area U.S. DEPARTMENT OF COMMERCE Economics and Statistics Administration U.S. Census Bureau



ENTITY TYPE: County
NAME: Tehama County (103)
ST: California (08)

