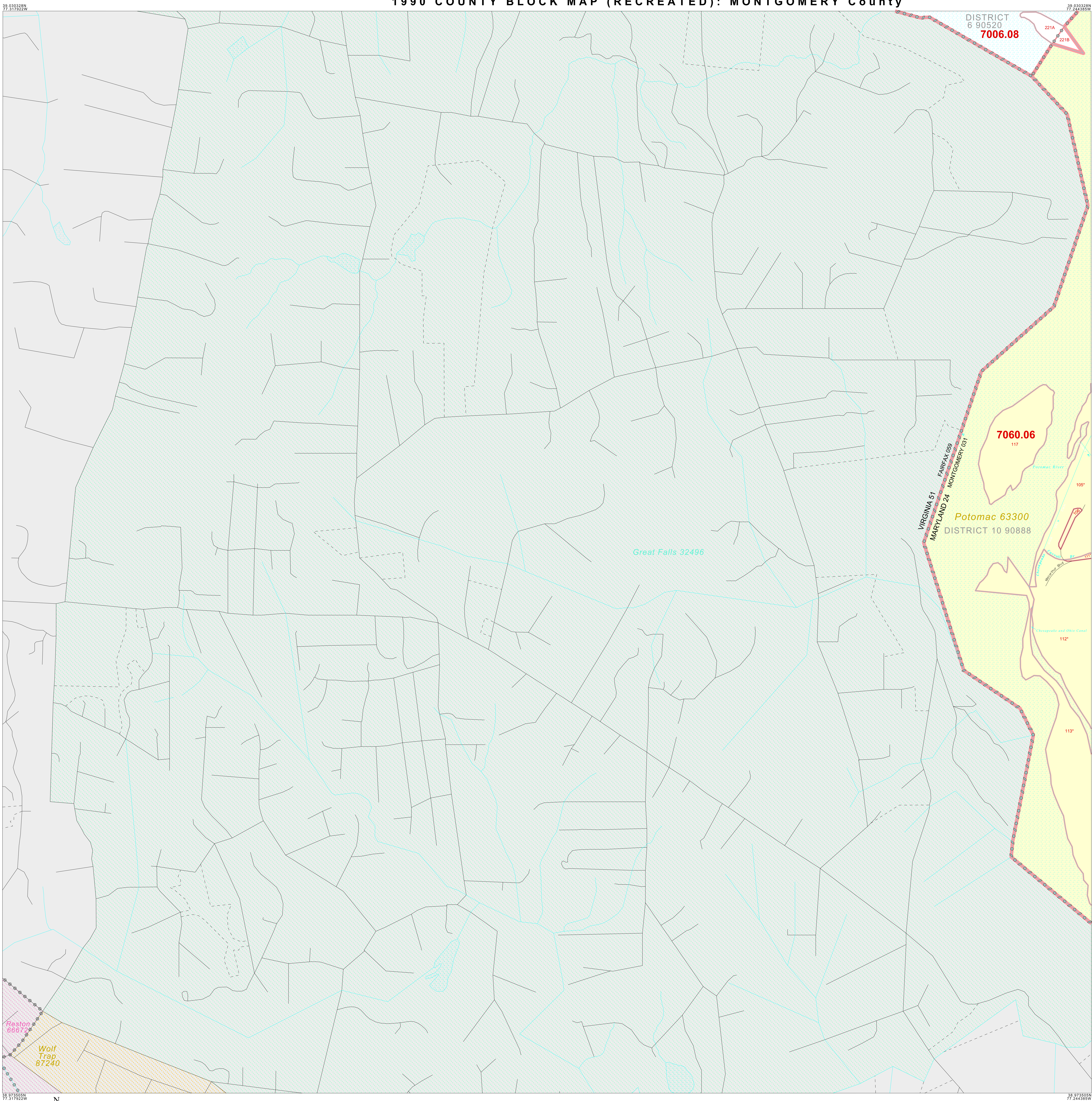


1990 COUNTY BLOCK MAP (RECREATED): MONTGOMERY County



LEGEND

SYMBOL	NAME STYLE
*****	INTERNATIONAL
*****	AIR
*****	Trust Land
*****	TJSA / TDSA / ANVSA
*****	ANRC
	MINOR CIVIL DIV ¹ / CCD
□	Place within Subject Entity
□	Incorporated Place / CDP ¹
□	Place outside of Subject Entity
□	Incorporated Place / CDP ¹
—	Census Tract / BNA ²
—	BLOCK ³

ABBREVIATION REFERENCE: AIR = American Indian Reservation; Trust Land = Off-Reservation Trust Land; TDSA = Tribal Jurisdiction Statistical Area; TJSA = Tribal Designated Statistical Area; ANVSA = Alaska Native Village Statistical Area; ANRC = Alaska Native Regional Corporation; CCD = Census Civil Division; CDP = Census Designated Place; BNA = Block Numbering Area

FEATURES	SYMBOL
Highway	—
Secondary Road	—
Deep Trench/Warehouse/Ferry	—
Railroad	—
Utility	—
Pipe/Paver Line	—
Ridge/Physical Feature	—
Property/Fence Line	—
Nonvisible Boundary	—
Stream/Shoreline	—
Intermittent Stream	—
River	—
Canal	—

Where international, state, and/or county boundaries coincide, the map shows the boundary symbol (or only the highest-ranking of these boundaries).
¹ A " " following a place name indicates that the place is also a false MCD; the false MCD name is not shown.
² In 1990, the crew-of-vessel population of ships at sea was allocated to census tracts with a "0P" suffix. An anchor symbol appeared on the 1990 maps locating a crew-of-vessel tract. These maps show a very small area symbolized as a census tract with the census tract number shown near the area.
³ A " " following a block number indicates that the block number is repeated elsewhere in the block.

Key to Adjacent Sheets

36	37	38
43	44	
		48

Sheet Location within Entity

SHEET 43 OF 51 PARENT SHEETS
 TOTAL SHEETS: 55 (Index 1; Parent 51; Inset 3)