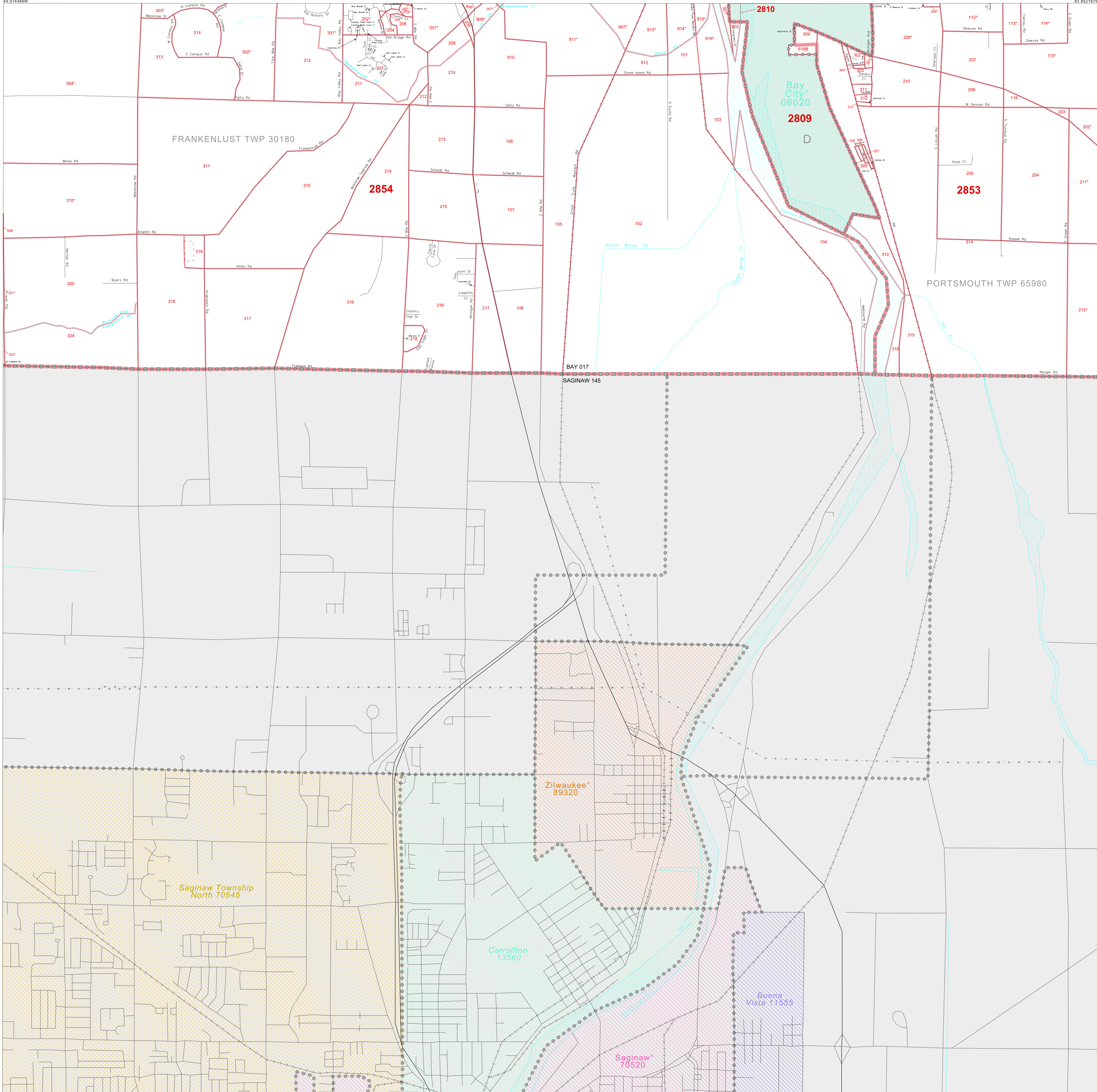


1990 COUNTY BLOCK MAP (RECREATED): Bay County

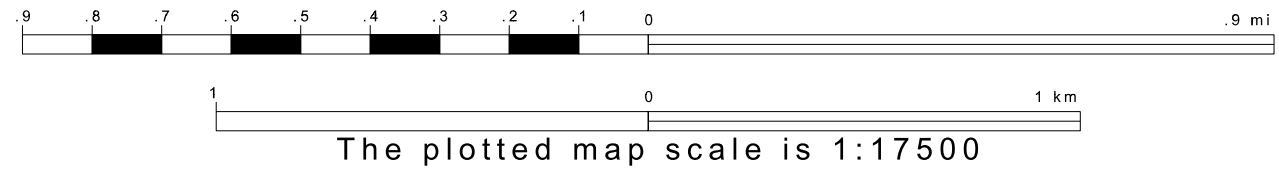
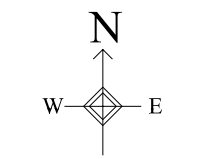
43 562401N
84 014486W

43 562401N
83 852187W



43 445451N
84 014486W

43 445451N
83 852187W



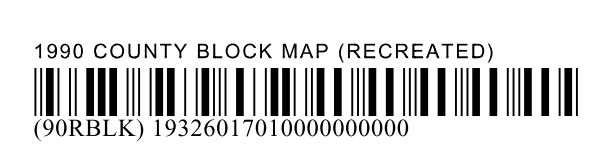
Key to Adjacent Sheets

6	7	8
9	10	11

SHEET LOCATION WITHIN ENTITY

SHEET 10 OF 11 PARENT SHEETS
TOTAL SHEETS: 21 (Index 1; Parent 11; Inset 9)

ENTITY TYPE: County
NAME: Bay County (017)
ST: Michigan (26)



All legal boundaries and names are as of January 1, 1990 as tabulated for the Public Law 94-171 and Summary Tape File products. The boundaries also reflect the feature network and coordinates as of the Census 2000 geographic base. Since 1990 the Census Bureau updated the base from the North American Datum of 1927 (NAD27) to the datum as of 1983 (NAD83) and made numerous updates to the base features from those depicted in 1990. The boundaries shown on this map are for the Census Bureau's statistical data collection and tabulation purposes only; their depiction and designation for statistical purposes does not constitute a determination of jurisdictional authority or rights or ownership or entitlement. Source: U.S. Census Bureau's TIGER database (Census 2000) Projection: State-based Albers' Equal Area U.S. DEPARTMENT OF COMMERCE Economics and Statistics Administration U.S. Census Bureau