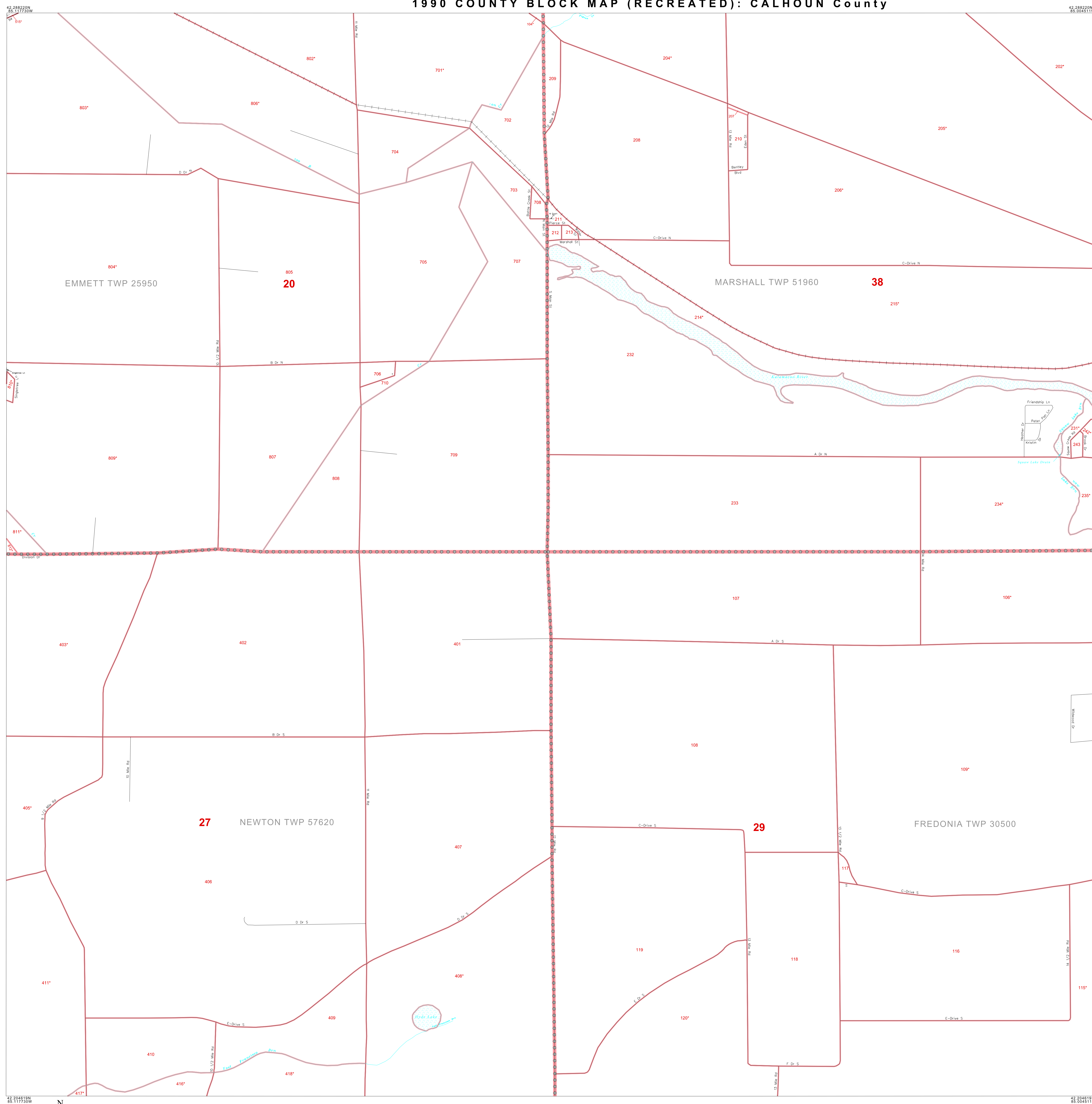


# 1990 COUNTY BLOCK MAP (RECREATED): CALHOUN County



### LEGEND

SYMBOL	NAME STYLE
☆☆☆☆	INTERNATIONAL
*****	AIR
◇◇◇◇◇	Trust Land
▽▽▽▽▽	TJSA / TDSA / ANVSA
▲▲▲▲▲	ANRC
▣▣▣▣	MINOR CIVIL DIV <sup>1</sup> / CCD
▤▤▤▤	Place within Subject Entity
▥▥▥▥	Incorporated Place / CDP <sup>1</sup>
▧▧▧▧	Place outside of Subject Entity
▨▨▨▨	Incorporated Place / CDP <sup>1</sup>
▩▩▩▩	Census Tract / BNA <sup>2</sup>
▪▪▪▪	BLOCK <sup>3</sup>

ABBREVIATION REFERENCE: AIR = American Indian Reservation; Trust Land = Off-Reservation Trust Land; TDSA = Tribal Jurisdiction Statistical Area; TJSA = Tribal Designated Statistical Area; ANVSA = Alaska Native Village Statistical Area; ANRC = Alaska Native Regional Corporation; CCD = Census Civil Division; CDP = Census Designated Place; BNA = Block Numbering Area

### FEATURES

Highway	Pipe/Paver Line	Stream/Shoaling
Secondary Road	Ridge/Physical Feature	Intermittent Stream
Deep Trench/Warehouse/Ferry	Property/Fence Line	River
Railroad	Nonvisible Boundary	Gravel

Where international, state, and/or county boundaries coincide, the map shows the boundary symbol for only the highest-ranking of these boundaries.

<sup>1</sup> A " " following a place name indicates that the place is also a false MCD; the false MCD name is not shown.

<sup>2</sup> In 1990, the crew-of-vehicle population of ships at sea was allocated to census tracts with a "SP" suffix. An anchor symbol appeared on the 1990 maps locating a crew-of-vehicle tract. These maps show a very small area symbolized as a census tract with the census tract number shown near the area.

<sup>3</sup> A " " following a block number indicates that the block number is repeated elsewhere in the block.

42 204610N  
85 117730W

The plotted map scale is 1:12500

42 204610N  
85 004811W

ENTITY TYPE: County  
NAME: Calhoun County (025)  
ST: Michigan (26)

1990 COUNTY BLOCK MAP (RECREATED)  
(WORLDK) 19920025013000000000

Key to Adjacent Sheets

8	9	10
14	15	16
20	21	22

Sheet Location within Entity

SHEET 15 OF 30 PARENT SHEETS  
TOTAL SHEETS: 40 (Index 1; Parent 30; Inset 9)