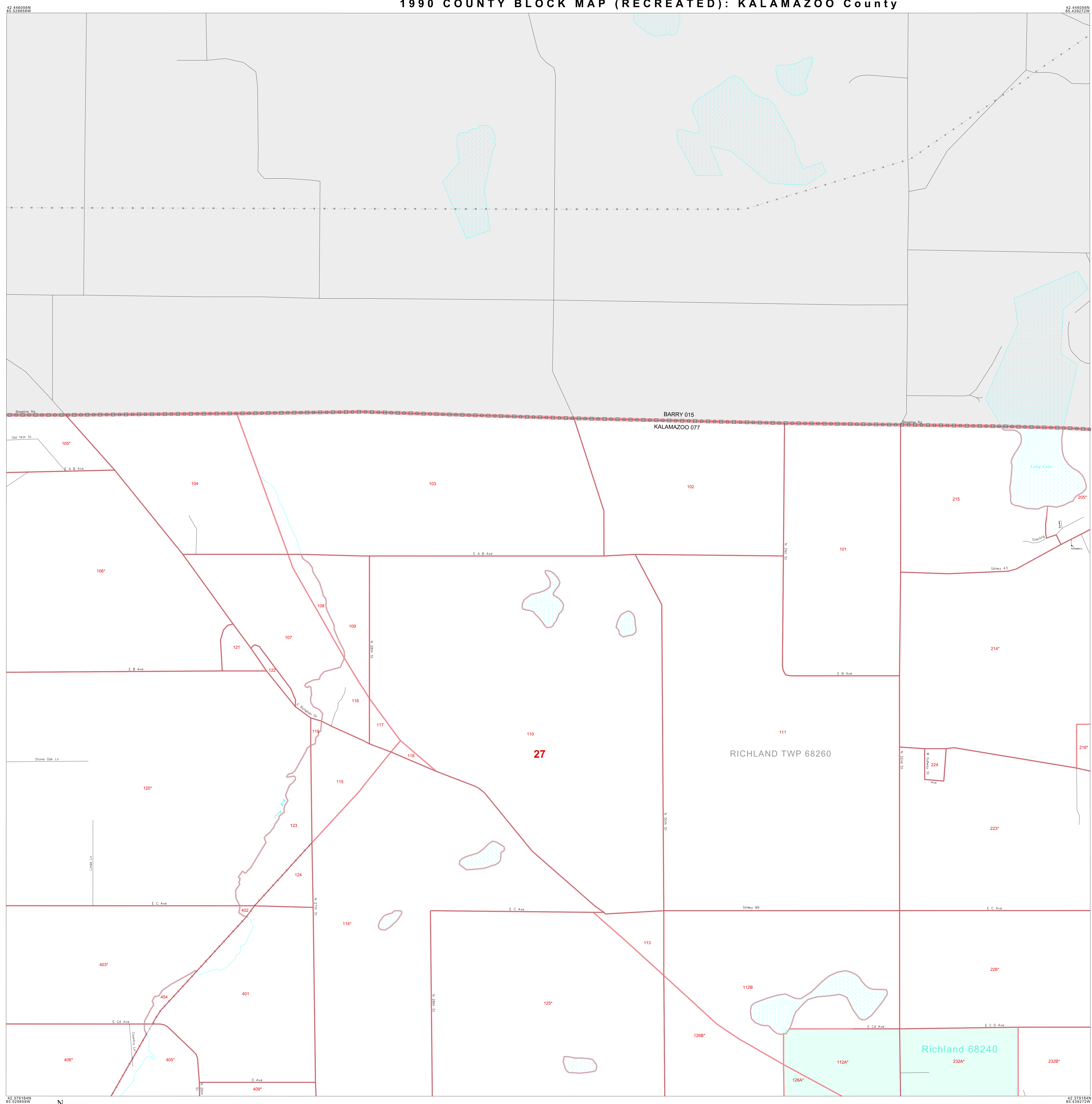


1990 COUNTY BLOCK MAP (RECREATED): KALAMAZOO County



### LEGEND

SYMBOL	NAME STYLE
☆☆☆☆	INTERNATIONAL
*****	AIR
◇◇◇◇◇	Trust Land
▽▽▽▽▽	TJSA / TDSA / ANVSA
▲▲▲▲▲	ANRC
▣▣▣▣▣	MINOR CIVIL DIV <sup>1</sup> / CCD
▨▨▨▨▨	Place within Subject Entity
▩▩▩▩▩	Incorporated Place / CDP <sup>1</sup>
▧▧▧▧▧	Place outside of Subject Entity
▦▦▦▦▦	Incorporated Place / CDP <sup>1</sup>
▤▤▤▤▤	Census Tract / BNA <sup>2</sup>
▥▥▥▥▥	BLOCK <sup>3</sup>

ABBREVIATION REFERENCE: AIR = American Indian Reservation; Trust Land = Off-Reservation Trust Land; TDSA = Tribal Jurisdiction Statistical Area; TJSA = Tribal Designated Statistical Area; ANVSA = Alaska Native Village Statistical Area; ANRC = Alaska Native Regional Corporation; CCD = Census Civil Division; CDP = Census Designated Place; BNA = Block Numbering Area

### FEATURES

Highway	Pipe/Paver Line	Stream/Shoaling
Secondary Road	Ridge/Physical Feature	Intermittent Stream
Deep Trench/Wharf/Ferry	Property/Fence Line	River
Railroad	Nonvisible Boundary	Canal

Where international, state, and/or county boundaries coincide, the map shows the boundary symbol for only the highest-ranking of these boundaries.

<sup>1</sup> A "\*" following a place name indicates that the place is also a false MCD; the false MCD name is not shown.

<sup>2</sup> In 1990, the crew-of-vessel population of ships at sea was allocated to census tracts with a "0V" suffix. An anchor symbol appeared on the 1990 maps locating a crew-of-vessel tract. These maps show a very small area symbolized as a census tract with the census tract number shown near the area.

<sup>3</sup> A "\*" following a block number indicates that the block number is repeated elsewhere in the block.

42 446056N  
85 529858W

The plotted map scale is 1:10000

42 376184N  
85 529858W

ENTITY TYPE: County  
NAME: Kalamazoo County (077)  
ST: Michigan (26)

1990 COUNTY BLOCK MAP (RECREATED)  
(PDRDLK) 19526077004000000000

Key to Adjacent Sheets

3	4	5
9	10	11

SHEET LOCATION WITHIN ENTITY

SHEET 4 OF 36 PARENT SHEETS  
TOTAL SHEETS: 41 (Index 1; Parent 36; Inset 4)