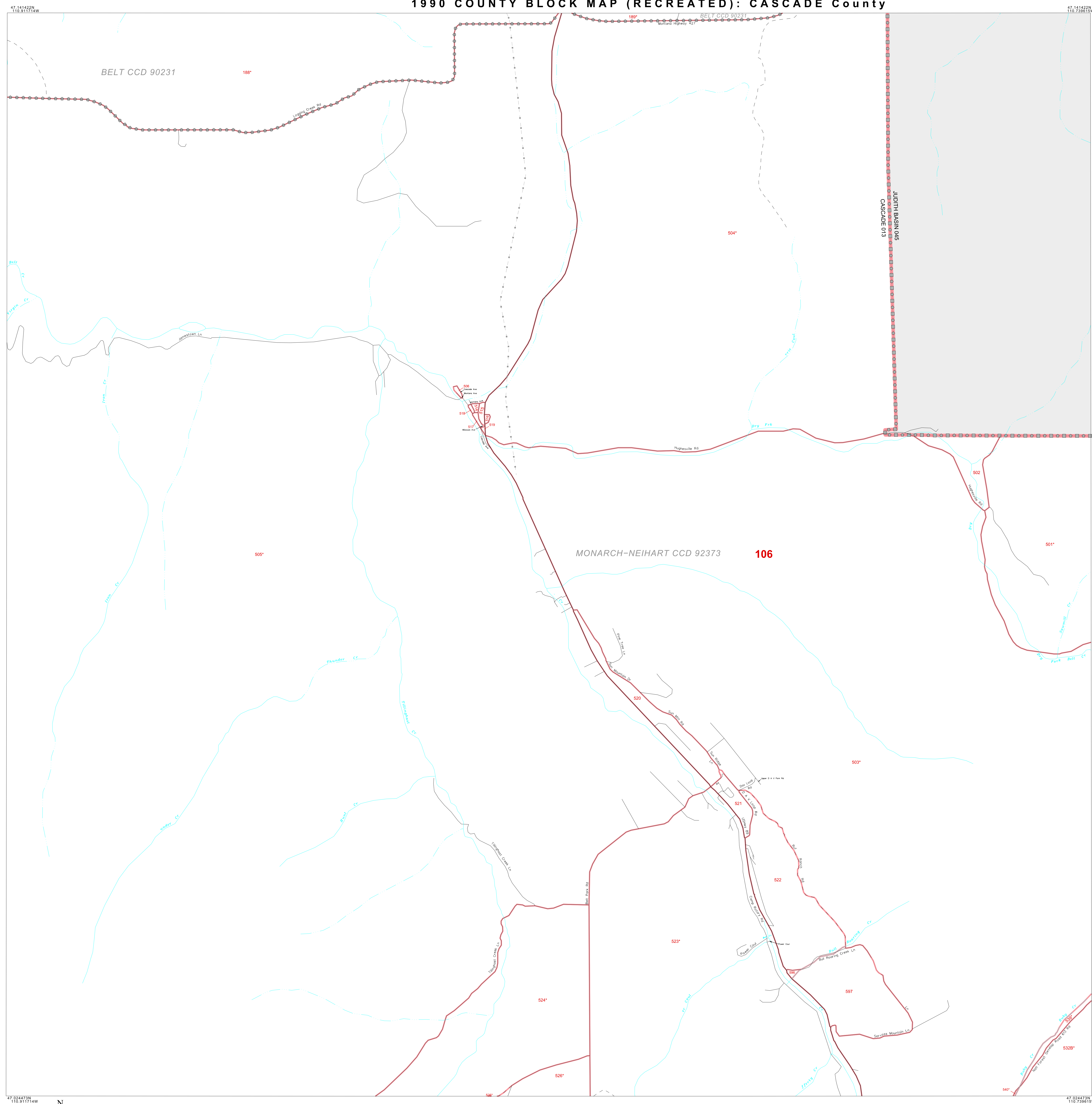


1990 COUNTY BLOCK MAP (RECREATED): CASCADE County



### LEGEND

| SYMBOL | NAME STYLE                            |
|--------|---------------------------------------|
| ☆☆☆☆   | INTERNATIONAL                         |
| *****  | AIR                                   |
| ◇◇◇◇◇  | Trust Land                            |
| ▽▽▽▽▽  | TJSA / TDSA / ANVSA                   |
| ▲▲▲▲▲  | ANRC                                  |
| ▣▣▣▣▣  | MINOR CIVIL DIV <sup>1</sup> / CCD    |
| ▨▨▨▨▨  | Place within Subject Entity           |
| ▩▩▩▩▩  | Incorporated Place / CDP <sup>1</sup> |
| ▧▧▧▧▧  | Place outside of Subject Entity       |
| ▦▦▦▦▦  | Incorporated Place / CDP <sup>1</sup> |
| ▬      | Census Tract / BNA <sup>2</sup>       |
| ▬      | BLOCK <sup>3</sup>                    |

**ABBREVIATION REFERENCE:** AIR = American Indian Reservation; Trust Land = Off-Reservation Trust Land; TDSA = Tribal Jurisdiction Statistical Area; TJSA = Tribal Designated Statistical Area; ANVSA = Alaska Native Village Statistical Area; ANRC = Alaska Native Regional Corporation; CCD = Census Civil Division; CDP = Census Designated Place; BNA = Block Numbering Area.

### FEATURES

|                             |                        |                     |
|-----------------------------|------------------------|---------------------|
| Highway                     | Pipe/Paver Line        | Stream/Shoaline     |
| Secondary Road              | Ridge/Physical Feature | Intermittent Stream |
| Deep Trench/Warehouse/Ferry | Property/Fence Line    | River               |
| Railroad                    | Nonvisible Boundary    | Gravel              |

Where international, state, and/or county boundaries coincide, the map shows the boundary symbol for only the highest-ranking of these boundaries.  
<sup>1</sup> A "\*" following a place name indicates that the place is also a false MCD; the false MCD name is not shown.  
<sup>2</sup> In 1990, the census-of-vessel population of ships at sea was allocated to census tracts with a "SP" suffix. An anchor symbol appeared on the 1990 maps locating a census-of-vessel tract. These maps show a very small area symbolized as a census tract with the census tract number shown near the area.  
<sup>3</sup> A "\*" following a block number indicates that the block number is repeated elsewhere in the block.

Key to Adjacent Sheets

|    |    |
|----|----|
| 39 | 40 |
| 46 | 47 |
| 54 | 55 |

Sheet Location within Entity

SHEET 47 OF 58 PARENT SHEETS  
 TOTAL SHEETS: 74 (Index 1; Parent 58; Inset 15)