

1990 COUNTY BLOCK MAP (RECREATED): LINCOLN County

**LEGEND**

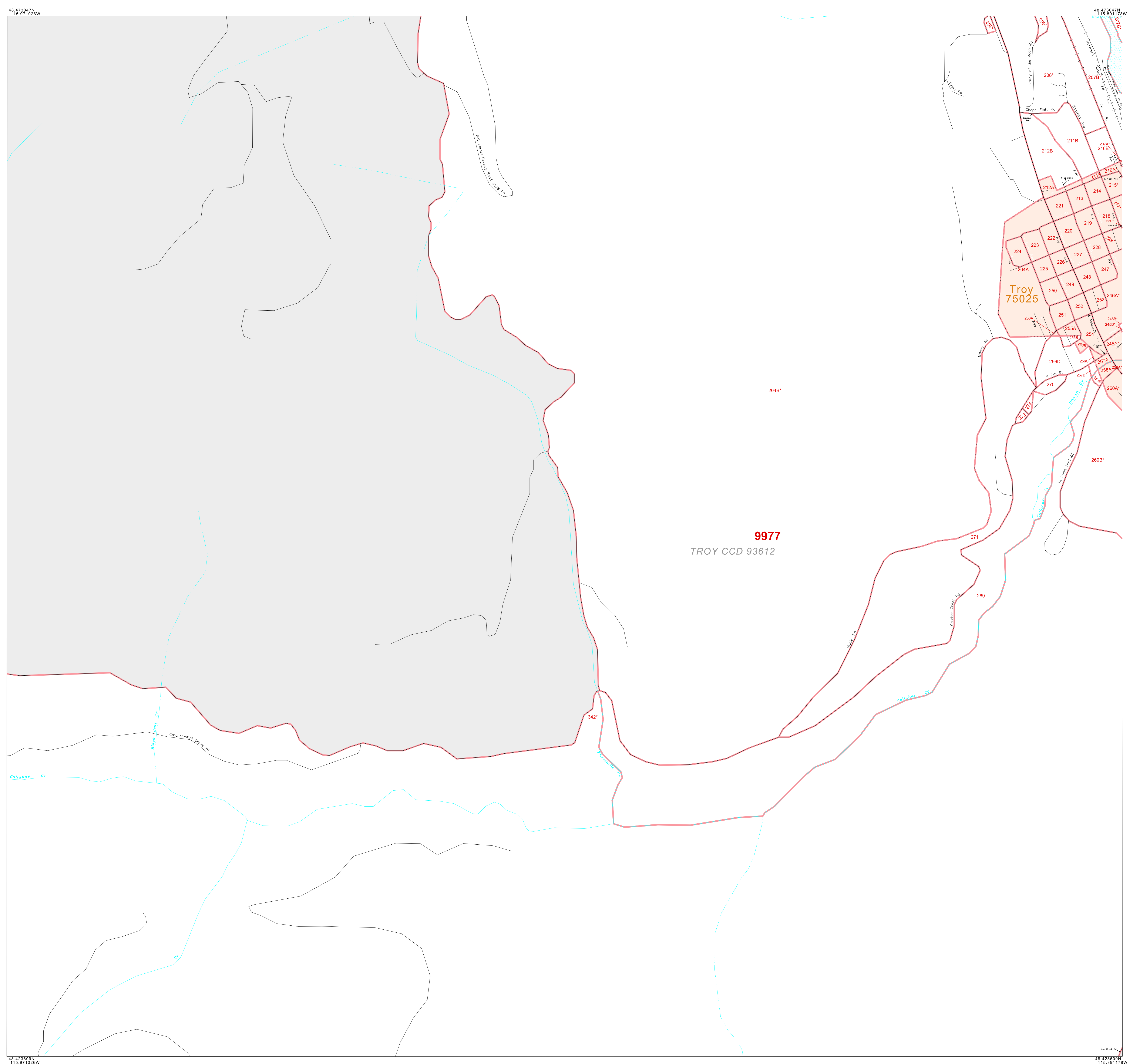
SYMBOL	NAME STYLE
☆☆☆☆	INTERNATIONAL
*****	AIR
◇◇◇◇◇	Trust Land
▽▽▽▽▽	TJSA / TDSA / ANVSA
▲▲▲▲▲	ANRC
	MINOR CIVIL DIV <sup>1</sup> / CCD
□□□□□	Place within Subject Entity
▨▨▨▨▨	Incorporated Place / CDP <sup>1</sup>
▩▩▩▩▩	Place outside of Subject Entity
▨▨▨▨▨	Incorporated Place / CDP <sup>1</sup>
▬▬▬▬▬	Census Tract / BNA <sup>2</sup>
▬▬▬▬▬	BLOCK <sup>3</sup>

**ABBREVIATION REFERENCE:** AIR = American Indian Reservation; Trust Land = Off-Reservation Trust Land; TDSA = Tribal Jurisdiction Statistical Area; TJSA = Tribal Designated Statistical Area; ANVSA = Alaska Native Village Statistical Area; ANRC = Alaska Native Regional Corporation; CCD = Census Civil Division; CDP = Census Designated Place; BNA = Block Numbering Area

**FEATURES**

Highway	Pipe/Paver Line	Stream/Shoaling
Secondary Road	Ridge/Physical Feature	Intermittent Stream
Deep Trench/Wetway/Ferry	Property/Fence Line	River
Railroad	Nonvisible Boundary	Canal

Where international, state, and/or county boundaries coincide, the map shows the boundary symbol for only the highest-ranking of these boundaries.  
<sup>1</sup> A "\*" following a place name indicates that the place is also a false MCD; the false MCD name is not shown.  
<sup>2</sup> In 1990, the census-of-vessels population of ships at sea was allocated to census tracts with a "SP" suffix. An anchor symbol appeared on the 1990 maps locating a census-of-vessels tract. These maps show a very small area symbolized as a census tract with the census tract number shown near the area.  
<sup>3</sup> A "\*" following a block number indicates that the block number is repeated elsewhere in the block.



Key to Adjacent Sheets

B04	B05
B07	B08 B09
B11	B12 B13

Sheet Location within Entity

INSET SHEET B08 of B16  
 TOTAL SHEETS: 68 (Index 1; Parent 39; Inset 28)