

1990 COUNTY BLOCK MAP (RECREATED): VALLEY County

LEGEND

SYMBOL	NAME STYLE
☆☆☆☆	INTERNATIONAL
*****	AIR
◇◇◇◇◇	Trust Land
▽▽▽▽▽	TJSA / TDSA / ANVSA
▲▲▲▲▲	ANRC
	MINOR CIVIL DIV' / CCD
○ ○ ○ ○ ○	Place within Subject Entity
□ □ □ □ □	Incorporated Place / CDP ¹
▨ ▨ ▨ ▨ ▨	Place outside of Subject Entity
▨ ▨ ▨ ▨ ▨	Incorporated Place / CDP ¹
—	Census Tract / BNA ²
—	Block ³

ABBREVIATION REFERENCE: AIR = American Indian Reservation; Trust Land = Off-Reservation Trust Land; TDSA = Tribal Jurisdiction Statistical Area; TJSA = Tribal Designated Statistical Area; ANVSA = Alaska Native Village Statistical Area; ANRC = Alaska Native Regional Corporation; CCD = Census Civil Division; CDP = Census Designated Place; BNA = Block Numbering Area

FEATURES

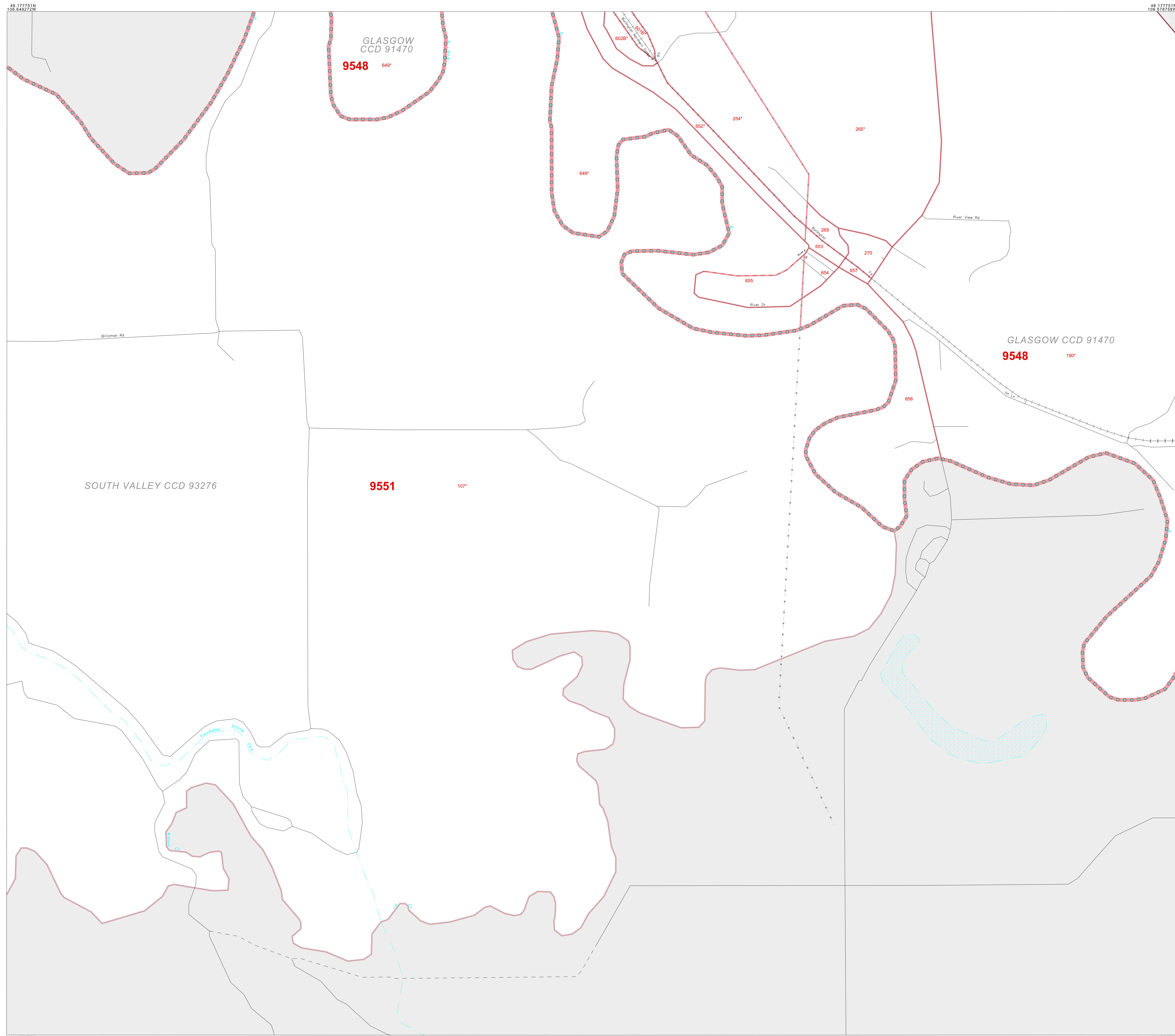
Highway	Pipe/Paver Line	Stream/Shoaline
Secondary Road	Ridge/Physical Feature	Intermittent Stream
Deep Trench/Warehouse/Ferry	Property/Fence Line	River
Railroad	Nonvisible Boundary	Gravel

Where international, state, and/or county boundaries coincide, the map shows the boundary symbol for only the highest-ranking of these boundaries.

¹ A "*" following a place name indicates that the place is also a false MCD; the false MCD name is not shown.

² In 1990, the census-of-vessel population of ships at sea was allocated to census tracts with a "SP" suffix. An anchor symbol appeared on the 1990 maps locating a census-of-vessel tract. These maps show a very small area symbolized as a census tract with the census tract number shown near the area.

³ A "*" following a block number indicates that the block number is repeated elsewhere in the block.



Key to Adjacent Sheets

B03	B04
B06	B07
B10	B11

Sheet Location within Entity

INSET SHEET B07 of B17
TOTAL SHEETS: 61 (Index 1; Parent 24; Inset 36)

48 137751N 106 045272W

48 137751N 106 076758W

48 137751N 106 045272W

48 137751N 106 076758W

Entity Type: County
Name: Valley County (105)
ST: Montana (30)

1990 COUNTY BLOCK MAP (RECREATED)
[Barcode]

Scale: 1:7000

Source: U.S. Census Bureau's TIGER database (Census 2000) Projection: State-based Albers' Equal Area U.S. DEPARTMENT OF COMMERCE Economics and Statistics Administration U.S. Census Bureau