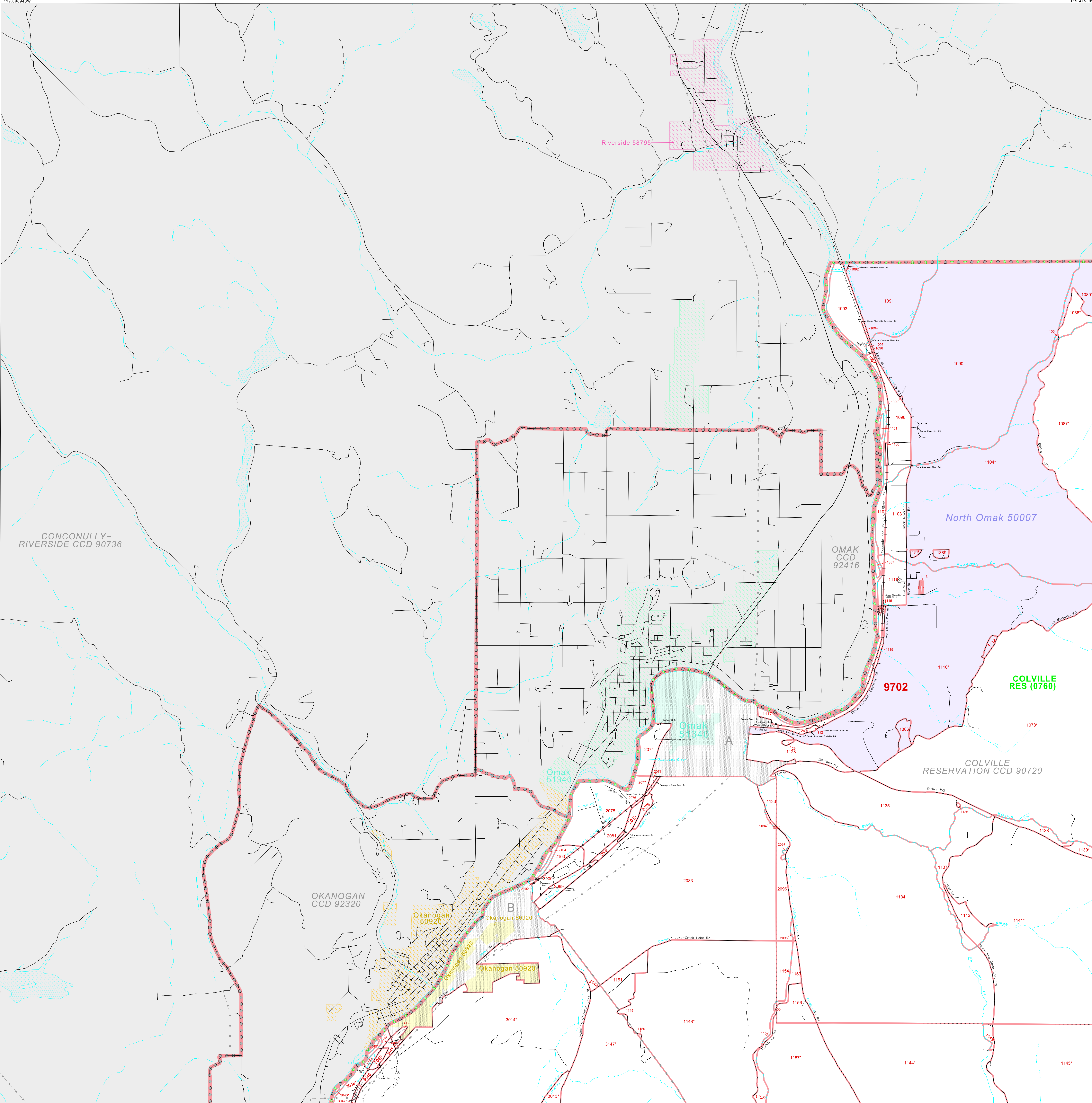


CENSUS 2000 BLOCK MAP: COLVILLE Reservation and Off-Reservation Trust Land

48 524210N
119 590949W

48 524215N
119 415399W



LEGEND

SYMBOL	NAME STYLE
☆☆☆☆☆	INTERNATIONAL
☆☆☆☆☆	AIR (FEDERAL)
☆☆☆☆☆	Trust Land / Home Land
☆☆☆☆☆	OTSA / TDSA / ANVSA
☆☆☆☆☆	AMERICAN INDIAN TRIBAL SUBDIVISION
☆☆☆☆☆	AIR (State)
☆☆☆☆☆	SDA/SA
☆☆☆☆☆	ANRC
---	STATE (or statistically equivalent entity)
---	COUNTY (or statistically equivalent entity)
---	MINOR CIVIL DIV. / CCD ¹
○	Consolidated City
■	Place within Subject Entity
■	Incorporated Place / CDP ¹
■	Place outside of Subject Entity
■	Incorporated Place / CDP ¹
---	Corporate Offset Boundary
---	Tribal Census Tract ²
---	Census Tract ³
---	CENSUS BLOCK ³

ABBREVIATION REFERENCE: AIR - American Indian Reservation; Trust Land - Off-Reservation Trust Land; Home Land - Hawaiian Home Land; OTSA - Oklahoma Tribal Statistical Area; TDSA - Tribal Designated Statistical Area; ANVSA - Alaska Native Village Statistical Area; SDA/SA - State Designated American Indian Statistical Area; ANRC - Alaska Native Regional Corporation; CDP - Census Designated Place; Minor Civil Div. (MCD) - Minor Civil Division; CCD - Census County Division

FEATURES

Highway	Pipe/Paver Line	Stream/Shoal
Secondary Road	Ridge/Physical Feature	Intermittent Stream
Deep Trench/Warehouse/Ferry	Property/Enclosure Line	River/Lake
Railroad	NonVisible Boundary	Gracier

Map navigation controls:

Where international, state, and/or county boundaries coincide, the map shows the boundary symbol for only the highest ranking of these boundaries.
¹ A "*" following a place name indicates that the place is coextensive with a MCD. A "-" indicates that the place is also a false MCD; the false MCD name is not shown.
² This map shows tribal census tract boundaries and numbers within the subject entity; nontribal census tract boundaries are shown outside of the subject entity but without numbers. A tribal census tract is a type of census tract defined within a federally recognized American Indian reservation or off-reservation trust land for the purpose of providing data based on an American Indian hierarchy rather than by state and county. Where reservations or off-reservation trust lands cross state or county boundaries, the same tribal census tract number may be assigned on both sides of the boundary, and, if so, constitutes a single tribal census tract entity.
³ A "*" following a block number indicates that the block number is repeated elsewhere in the block.

Key to Adjacent Sheets

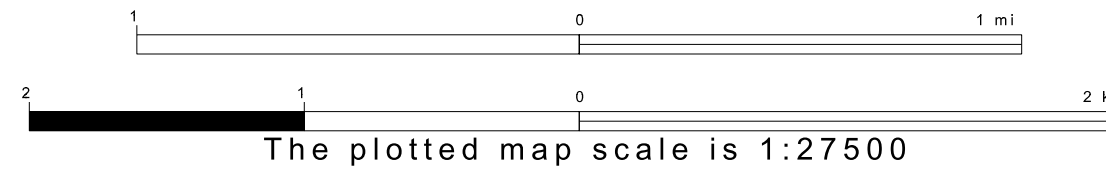
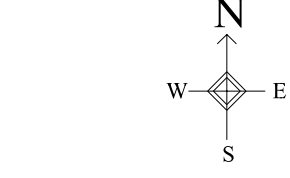
1	2
7	8 9

Sheet Location within Entity

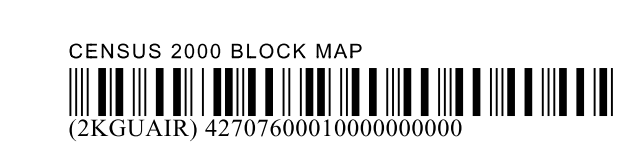
SHEET 1 OF 24 PARENT SHEETS
TOTAL SHEETS: 32 (Index 1; Parent 24; Inset 7)

48 340384N
119 690949W

48 340389N
119 415399W



ENTITY TYPE: American Indian Reservation
NAME: Colville Reservation and Off-Reservation Trust Land (0760)
ST: Washington



All legal boundaries and names are as of January 1, 2000. The boundaries shown on this map are for Census Bureau statistical data collection and tabulation purposes only; their depiction and designation for statistical purposes does not constitute a determination of jurisdictional authority or rights of ownership or entitlement. Source: U.S. Census Bureau's TIGER database (Census 2000). Projection: State-based Albers' Equal Area. U.S. DEPARTMENT OF COMMERCE Economics and Statistics Administration U.S. Census Bureau