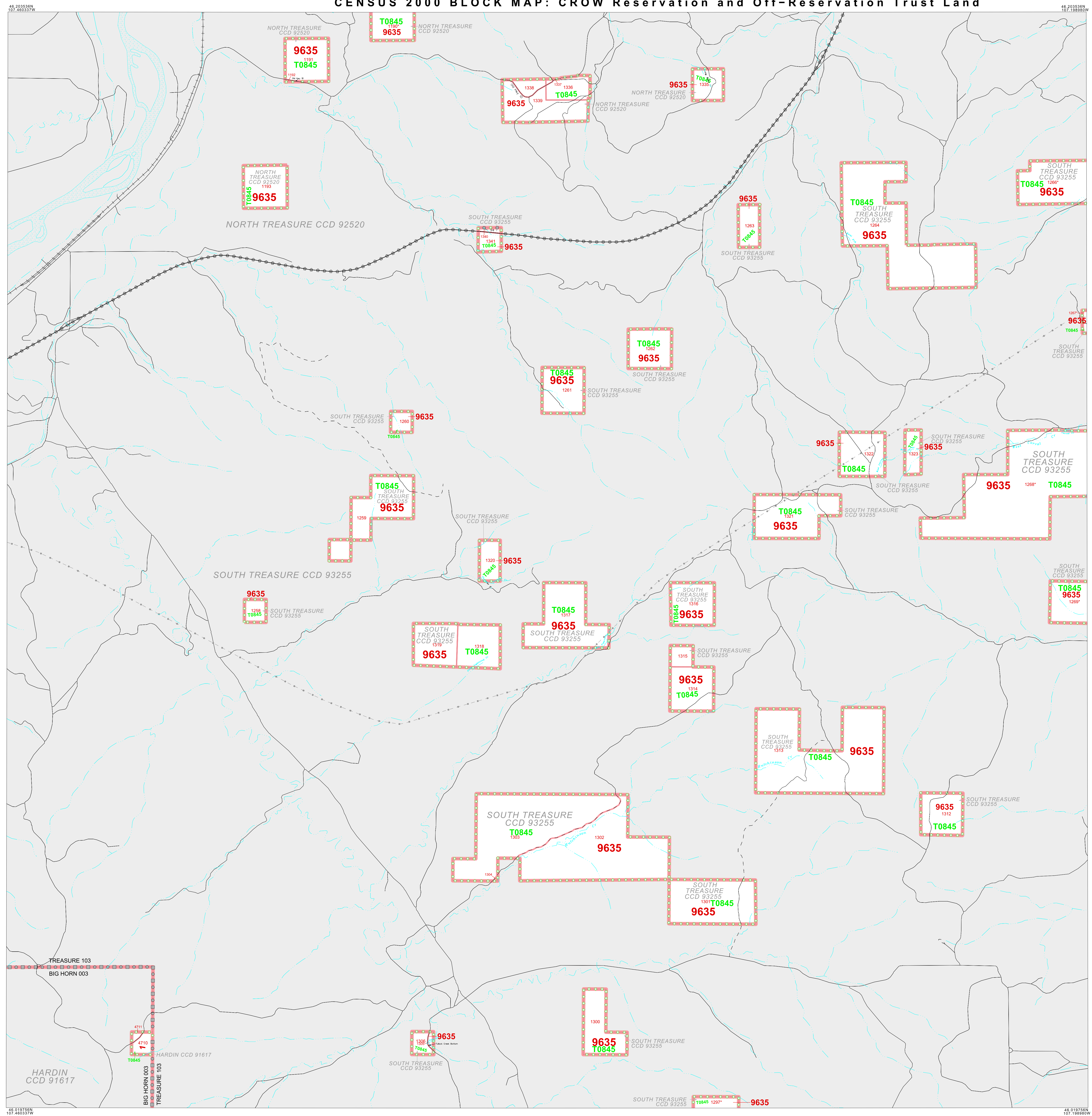


CENSUS 2000 BLOCK MAP: CROW Reservation and Off-Reservation Trust Land



**LEGEND**

SYMBOL	NAME STYLE
*****	INTERNATIONAL
*****	AIR (FEDERAL)
*****	Trust Land / Home Land
*****	OTSA / TDSA / ANVSA
*****	AMERICAN INDIAN TRIBAL SUBDIVISION
*****	AIR (State)
*****	SDA/ISA
*****	ANRC
*****	STATE (or statistically equivalent entity)
*****	COUNTY (or statistically equivalent entity)
*****	MINOR CIVIL DIV. / CCD <sup>1</sup>
*****	Consolidated City
*****	Place within Subject Entity
*****	Incorporated Place / CDP <sup>1</sup>
*****	Place outside of Subject Entity
*****	Incorporated Place / CDP <sup>1</sup>
*****	Corporate Offset Boundary
*****	Tribal Census Tract <sup>2</sup>
*****	Census Tract <sup>3</sup>
*****	CENSUS BLOCK <sup>3</sup>

**ABBREVIATION REFERENCE:** AIR - American Indian Reservation; Trust Land - Off-Reservation Trust Land; Home Land - Hawaiian Home Land; OTSA - Oklahoma Tribal Statistical Area; TDSA - Tribal Designated Statistical Area; ANVSA - Alaska Native Village Statistical Area; SDA/ISA - State Designated American Indian Statistical Area; ANRC - Alaska Native Regional Corporation; CDP - Census Designated Place; Minor Civil Div. (MCD) - Minor Civil Division; CCD - Census County Division

**FEATURES**

Highway	Pipe/Paver Line	Stream/Shoeline
Secondary Road	Ridge/Physical Feature	Intermittent Stream
Deep Trench/Warehouse/Ferry	Property/Fence Line	River/Lake
Railroad	NonVisible Boundary	Glacier

Where international, state, and/or county boundaries coincide, the map shows the boundary symbol for only the highest ranking of these boundaries.  
<sup>1</sup> A "\*" following a place name indicates that the place is coextensive with a MCD. A "-" indicates that the place is also a false MCD; the false MCD name is not shown.  
<sup>2</sup> This map shows tribal census tract boundaries and numbers within the subject entity; nontribal census tract boundaries are shown outside of the subject entity but without numbers. A tribal census tract is a type of census tract defined within a federally recognized American Indian reservation or off-reservation trust land for the purpose of providing data based on an American Indian hierarchy rather than by state and county. Where reservations or off-reservation trust lands cross state or county boundaries, the same tribal census tract number may be assigned on both sides of the boundary, and, if so, constitutes a single tribal census tract entity.  
<sup>3</sup> A "\*" following a block number indicates that the block number is repeated elsewhere in the block.

**OFF-RESERVATION TRUST LAND NAMES**  
 T0845 Crow