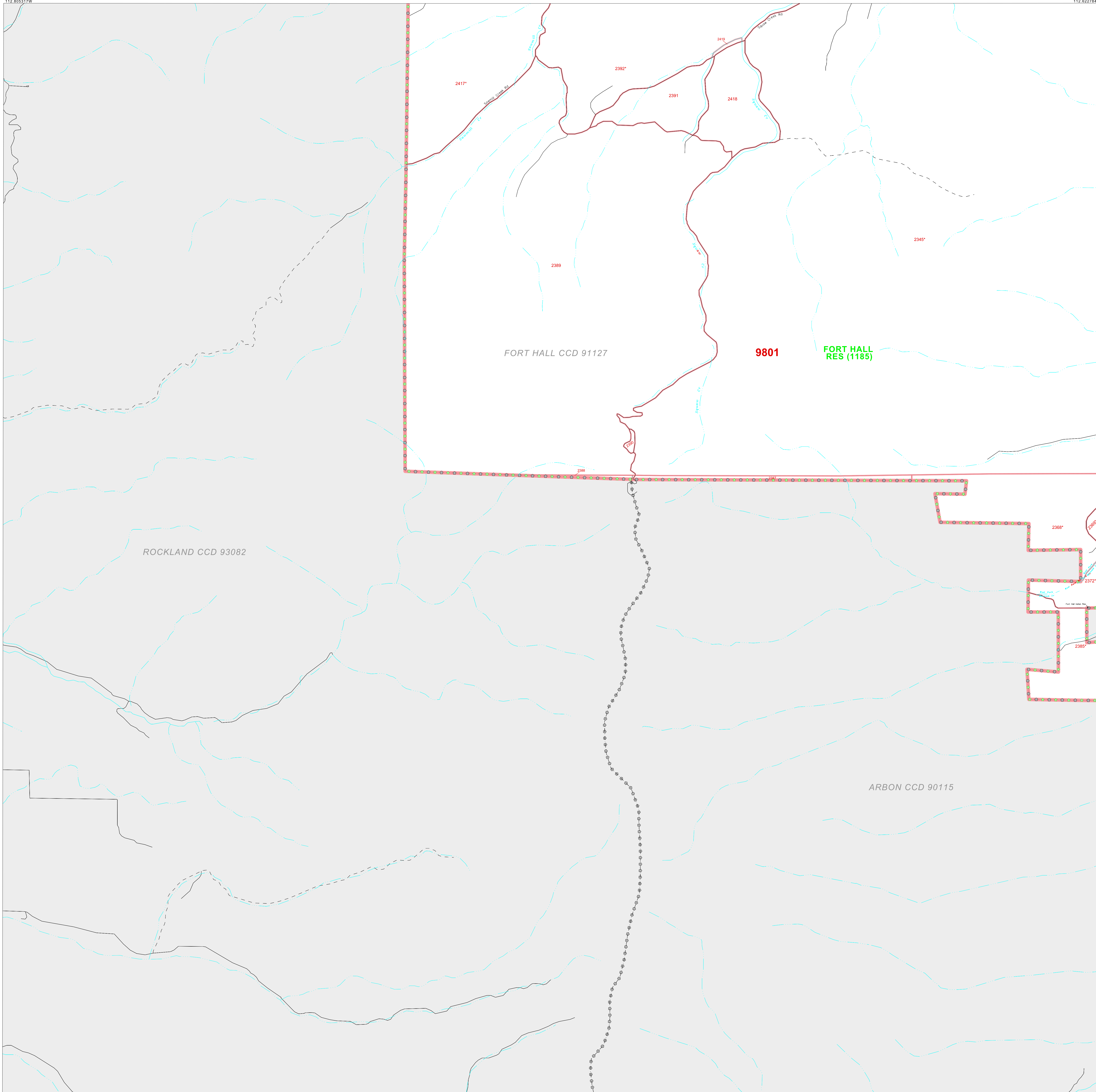


CENSUS 2000 BLOCK MAP: FORT HALL Reservation and Off-Reservation Trust Land

42 846371N  
112 805317W

42 846371N  
112 802278W



LEGEND

- | SYMBOL | NAME STYLE                                  |
|--------|---|
| ☆☆☆☆☆  | INTERNATIONAL                               |
| *****  | AIR (FEDERAL)                               |
| ◇◇◇◇◇  | Trust Land / Home Land                      |
| ◇◇◇◇◇  | OTSA / TDSA / ANVSA                         |
| ◇◇◇◇◇  | AMERICAN INDIAN TRIBAL SUBDIVISION          |
| ////// | AIR (State)                                 |
| ◇◇◇◇◇  | SDA/SA                                      |
| ▽▽▽▽   | ANRC  |
| ////// | STATE (or statistically equivalent entity)  |
|        | COUNTY (or statistically equivalent entity) |
| ○○○○○  | MINOR CIVIL DIV. / CCD <sup>1</sup>         |
| ○○○○○  | Consolidated City                           |
| □      | Place within Subject Entity                 |
| □      | Incorporated Place / CDP <sup>1</sup>       |
| □      | Place outside of Subject Entity             |
| □      | Incorporated Place / CDP <sup>1</sup>       |
| -----  | Corporate Offset Boundary                   |
| =====  | Tribal Census Tract <sup>2</sup>            |
| =====  | Census Tract <sup>3</sup>                   |
| =====  | CENSUS BLOCK <sup>3</sup>                   |

ABBREVIATION REFERENCE: AIR - American Indian Reservation; Trust Land - Off-Reservation Trust Land; Home Land - Hawaiian Home Land; OTSA - Oklahoma Tribal Statistical Area; TDSA - Tribal Designated Statistical Area; ANVSA - Alaska Native Village Statistical Area; SDA/SA - State Designated American Indian Statistical Area; ANRC - Alaska Native Regional Corporation; CDP - Census Designated Place; Minor Civil Div. (MCD) - Minor Civil Division; CCD - Census County Division

FEATURES

- |                             |                         |                     |
|-----------------------------|-------------------------|---------------------|
| Highway                     | Pipe/Paver Line         | Stream/Shoal Line   |
| Secondary Road              | Ridge/Physical Feature  | Intermittent Stream |
| Deep Trench/Warehouse/Ferry | Property/Enclosure Line | River/Lake          |
| Railroad                    | NonVisible Boundary     | Gracier             |

Where international, state, and/or county boundaries coincide, the map shows the boundary symbol for only the highest ranking of these boundaries.  
<sup>1</sup> A "\*" following a place name indicates that the place is coextensive with a MCD. A "-" indicates that the place is also a false MCD; the false MCD name is not shown.  
<sup>2</sup> This map shows tribal census tract boundaries and numbers within the subject entity; nontribal census tract boundaries are shown outside of the subject entity but without numbers. A tribal census tract is a type of census tract defined within a federally recognized American Indian reservation or off-reservation trust land for the purpose of providing data based on an American Indian hierarchy rather than by state and county. Where reservations or off-reservation trust lands cross state or county boundaries, the same tribal census tract number may be assigned on both sides of the boundary, and, if so, constitutes a single tribal census tract entity.  
<sup>3</sup> A "\*" following a block number indicates that the block number is repeated elsewhere in the block.

Key to Adjacent Sheets

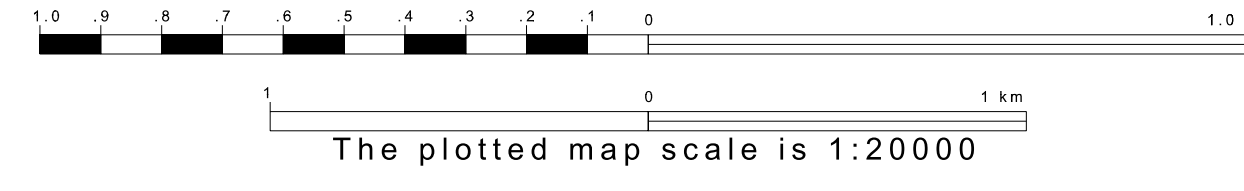
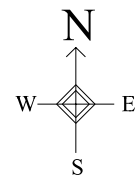
17	18
19	20

SHEET LOCATION WITHIN ENTITY

SHEET 19 OF 20 PARENT SHEETS  
TOTAL SHEETS: 23 (Index 1; Parent 20; Inset 2)

42 812604N  
112 805317W

42 812604N  
112 802278W



All legal boundaries and names are as of January 1, 2000. The boundaries shown on this map are for Census Bureau statistical data collection and tabulation purposes only; their depiction and designation for statistical purposes does not constitute a determination of jurisdictional authority or rights of ownership or entitlement. Source: U.S. Census Bureau's TIGER database (Census 2000). Projection: State-based Albers's Equal Area. U.S. DEPARTMENT OF COMMERCE Economics and Statistics Administration U.S. Census Bureau

ENTITY TYPE: American Indian Reservation  
 NAME: Fort Hall Reservation and Off-Reservation Trust Land (1185)  
 ST: Idaho

