

# CENSUS 2000 BLOCK MAP: BROWARD County

26 356243N  
80 474458W

26 356243N  
80 422051W

### LEGEND

SYMBOL	NAME STYLE
*****	INTERNATIONAL
*****	<b>AIR (FEDERAL)</b>
*****	<b>Trust Land / Home Land</b>
*****	<b>OTSA / TDSA / ANVSA</b>
*****	AMERICAN INDIAN TRIBAL SUBDIVISION
//////	AIR (State)
◇◇◇◇◇	SDAISA
▽▽▽▽▽	ANRC
//////	STATE (or statistically equivalent entity)
■■■■■	COUNTY (or statistically equivalent entity)
●●●●●	MINOR CIVIL DIV. / CCD <sup>1</sup>
○	Consolidated City
○	Place within Subject Entity
○	Incorporated Place / CDP <sup>1</sup>
○	Place outside of Subject Entity
○	Incorporated Place / CDP <sup>1</sup>
.....	Corporate Offset Boundary
———	<b>Census Tract</b>
———	<b>Block<sup>2</sup></b>

ABBREVIATION REFERENCE: AIR = American Indian Reservation; Trust Land = Off-Reservation Trust Land; Home Land = Hawaiian Home Land; OTSA = Oklahoma Tribal Statistical Area; TDSA = Tribal Designated Statistical Area; ANVSA = Alaska Native Village Statistical Area; SDAISA = State Designated American Indian Statistical Area; ANRC = Alaska Native Regional Corporation; CDP = Census Designated Place; Minor Civil Div. (MCD) = Minor Civil Division; CCD = Census County Division

#### FEATURES

Highway	Pipe/Power Line	Stream/Shoreline
Secondary Road	Ridge/Physical Feature	Intermittent Stream
Deep Trail/Highway/Ferry	Property/Fence Line	River/Lake
Railroad	Nonvisible Boundary	Glacier

Inset

Out Area

Where international, state, and/or county boundaries coincide, the map shows the boundary symbol for only the highest-ranking of these boundaries.  
<sup>1</sup> A " " following a place name indicates that the place is coextensive with a MCD. A " " indicates that the place is also a false MCD; the false MCD name is not shown.  
<sup>2</sup> A " " following a block number indicates that the block number is repeated elsewhere in the block.

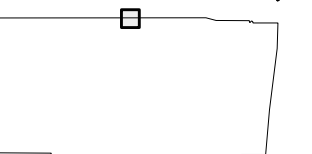
PALM BEACH 099  
BROWARD 011

**703.07**      CONSERVATION CCD 90637      1000'

Key to Adjacent Sheets

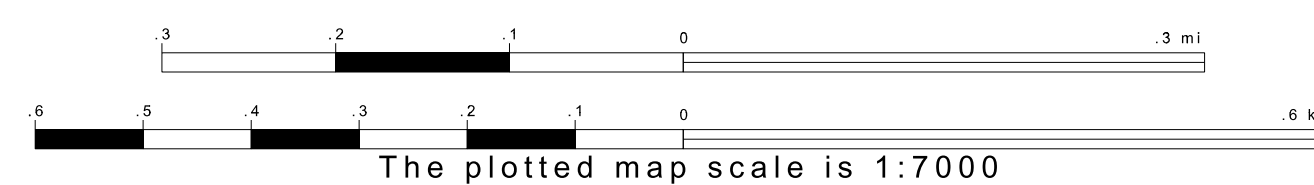
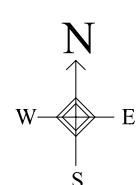
8	9	10
24	25	26

Sheet Location within Entity



SHEET 9 OF 141 PARENT SHEETS  
TOTAL SHEETS: 146 (Index 1; Parent 141; Inset 4)

26 309465N  
80 474458W



26 309465N  
80 422051W

ENTITY TYPE: County  
NAME: Broward County (011)  
ST: Florida (12)

