

CENSUS 2000 BLOCK MAP: BROWARD County

26 309465N
80 422051W

26 309465N
80 369644W

LEGEND

SYMBOL	NAME STYLE
*****	INTERNATIONAL
*****	AIR (FEDERAL)
*****	Trust Land / Home Land
*****	OTSA / TDSA / ANVSA
*****	AMERICAN INDIAN TRIBAL SUBDIVISION
//////	AIR (State)
◇◇◇◇◇◇	SDAISA
▽▽▽▽▽▽	ANRC
//////	STATE (or statistically equivalent entity)
■■■■■■	COUNTY (or statistically equivalent entity)
●●●●●●	MINOR CIVIL DIV. / CCD ¹
○●○●○●	Consolidated City
□□□□□□	Place within Subject Entity
□□□□□□	Incorporated Place / CDP ¹
□□□□□□	Place outside of Subject Entity
□□□□□□	Incorporated Place / CDP ¹
-----	Corporate Offset Boundary
=====	Census Tract
=====	Block ²

ABBREVIATION REFERENCE: AIR = American Indian Reservation; Trust Land = Off-Reservation Trust Land; Home Land = Hawaiian Home Land; OTSA = Oklahoma Tribal Statistical Area; TDSA = Tribal Designated Statistical Area; ANVSA = Alaska Native Village Statistical Area; ANVSA = State Designated American Indian Statistical Area; ANRC = Alaska Native Regional Corporation; CDP = Census Designated Place; Minor Civil Div. (MCD) = Minor Civil Division; CCD = Census County Division

FEATURES

Highway	Pipe/Power Line	Stream/Shoreline
Secondary Road	Ridge/Physical Feature	Intermittent Stream
Levee/Dike/Ferry	Property/Fence Line	River/Lake
Railroad	Nonvisible Boundary	Glacier

Inset Out Area

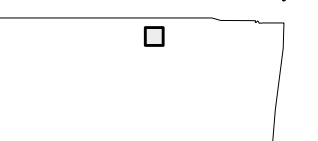
Where international, state, and/or county boundaries coincide, the map shows the boundary symbol for only the highest-ranking of these boundaries.
¹ A " " following a place name indicates that the place is coterminous with a MCD. A " " indicates that the place is also a false MCD; the false MCD name is not shown.
² A " " following a block number indicates that the block number is repeated elsewhere in the block.

1006 CONSERVATION CCD 90637 703.07

Key to Adjacent Sheets

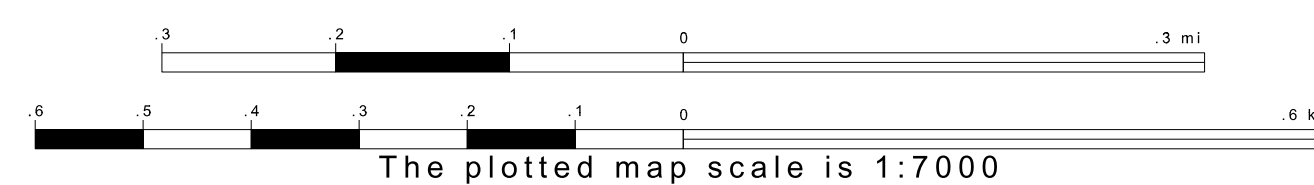
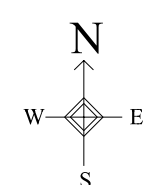
9	10	11
25	26	27
41	42	43

Sheet Location within Entity



SHEET 26 OF 141 PARENT SHEETS
TOTAL SHEETS: 146 (Index 1; Parent 141; Inset 4)

26 309465N
80 422051W



ENTITY TYPE: County
NAME: Broward County (011)
ST: Florida (12)

