

CENSUS 2000 BLOCK MAP: BROWARD County

26 309465N  
80 309644W

26 309465N  
80 317237W

### LEGEND

SYMBOL	NAME STYLE
*****	INTERNATIONAL
*****	AIR (FEDERAL)
*****	Trust Land / Home Land
*****	OTSA / TDSA / ANVSA
*****	AMERICAN INDIAN TRIBAL SUBDIVISION
//////	AIR (State)
◇◇◇◇◇	SDA/SA
▽▽▽▽▽	ANRC
//////	STATE (or statistically equivalent entity)
■■■■■	COUNTY (or statistically equivalent entity)
●●●●●	MINOR CIVIL DIV. / CCD <sup>1</sup>
○●○●○	Consolidated City
■	Place within Subject Entity
■	Incorporated Place / CDP <sup>1</sup>
■	Place outside of Subject Entity
■	Incorporated Place / CDP <sup>1</sup>
-----	Corporate Offset Boundary
=====	Census Tract
=====	BLOCK <sup>2</sup>

ABBREVIATION REFERENCE: AIR = American Indian Reservation; Trust Land = Off-Reservation Trust Land; Home Land = Hawaiian Home Land; OTSA = Oklahoma Tribal Statistical Area; TDSA = Tribal Designated Statistical Area; ANVSA = Alaska Native Village Statistical Area; ANVSA = State Designated American Indian Statistical Area; ANRC = Alaska Native Regional Corporation; CDP = Census Designated Place; Minor Civil Div. (MCD) = Minor Civil Division; CCD = Census County Division

### FEATURES

Highway	Pipe/Power Line	Stream/Shoreline
Secondary Road	Ridge/Physical Feature	Intermittent Stream
Deep Trail/Pathway/Ferry	Property/Fence Line	River/Lake
Railroad	Nonvisible Boundary	Glacier

Inset Out Area

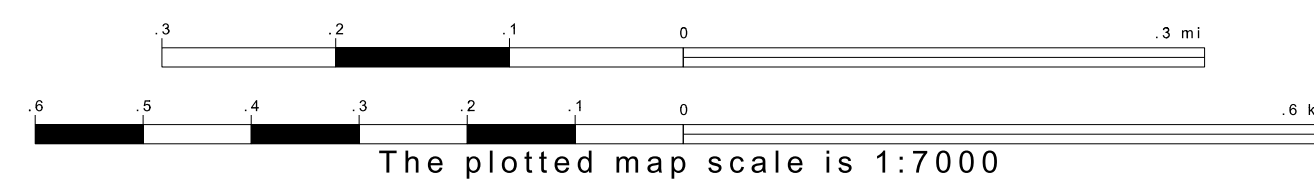
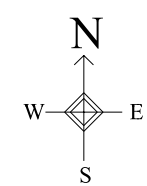
Where international, state, and/or county boundaries coincide, the map shows the boundary symbol for only the highest-ranking of these boundaries.  
<sup>1</sup> A " " following a place name indicates that the place is coextensive with a MCD. A " " indicates that the place is also a false MCD; the false MCD name is not shown.  
<sup>2</sup> A " " following a block number indicates that the block number is repeated elsewhere in the block.

703.07

CONSERVATION CCD 90637

1000'

26 309465N  
80 309644W



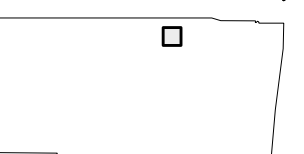
26 309465N  
80 317237W

ENTITY TYPE: County  
 NAME: Broward County (011)  
 ST: Florida (12)

Key to Adjacent Sheets

10	11	12
26	27	28
42	43	44

Sheet Location within Entity



SHEET 27 OF 141 PARENT SHEETS  
 TOTAL SHEETS: 146 (Index 1; Parent 141; Inset 4)

