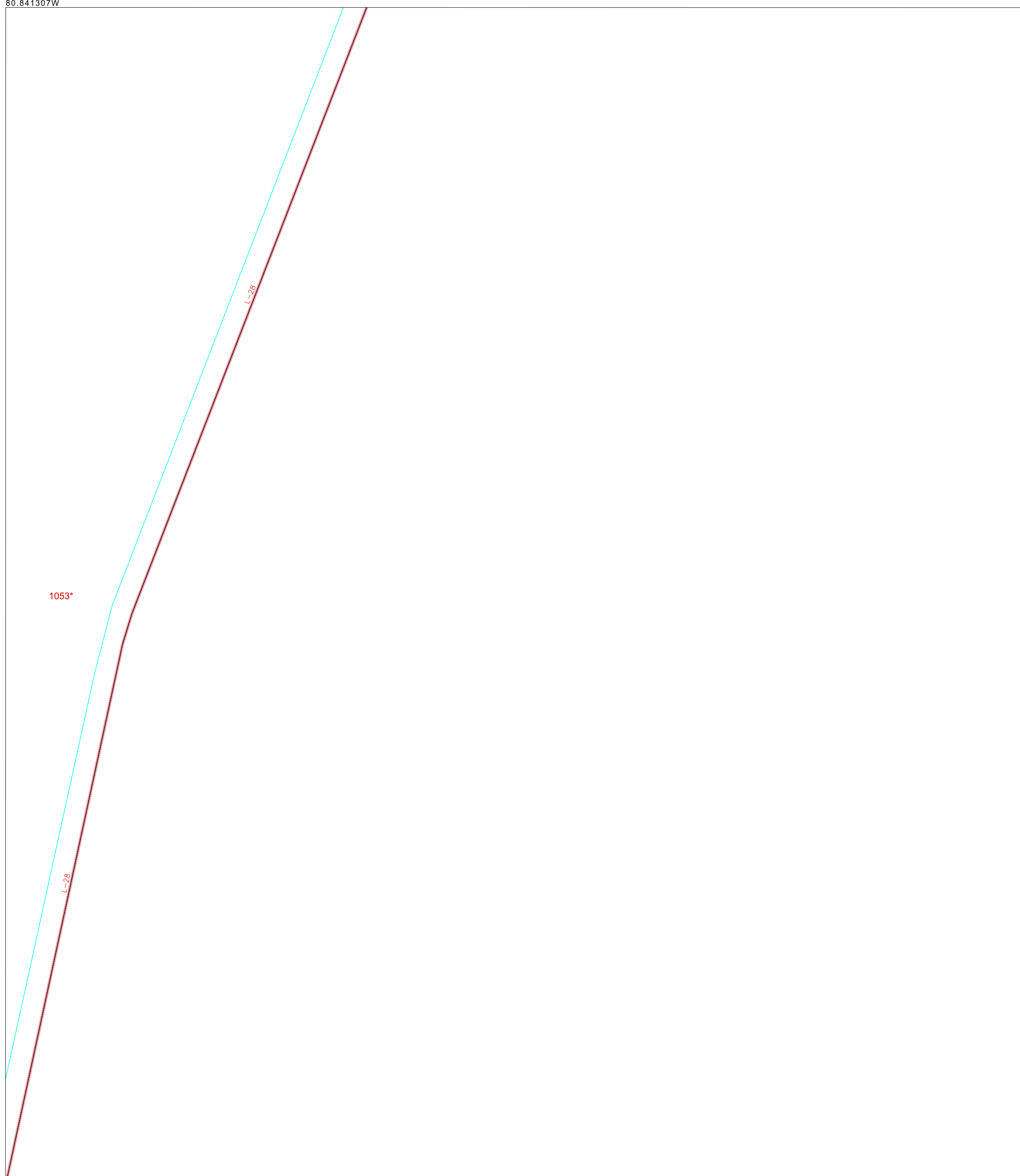


CENSUS 2000 BLOCK MAP: BROWARD County

26 122343N  
80 841307W

26 122343N  
80 788900W



703.07 CONSERVATION CCD 90637 MICCOSUKEE RES (2240)

**LEGEND**

SYMBOL	NAME STYLE
*****	INTERNATIONAL
*****	AIR (FEDERAL)
*****	Trust Land / Home Land
*****	OTSA / TDSA / ANVSA
*****	AMERICAN INDIAN TRIBAL SUBDIVISION
//////	AIR (State)
o-o-o-o-o	SDA/SA
▼▲▼▲▼▲	ANRC
	STATE (or statistically equivalent entity)
	COUNTY (or statistically equivalent entity)
o-o-o-o-o	MINOR CIVIL DIV. / CCD <sup>1</sup>
o-o-o-o-o	Consolidated City
o-o-o-o-o	Place within Subject Entity
o-o-o-o-o	Incorporated Place / CDP <sup>1</sup>
o-o-o-o-o	Place outside of Subject Entity
o-o-o-o-o	Incorporated Place / CDP <sup>1</sup>
o-o-o-o-o	Corporate Offset Boundary
o-o-o-o-o	<b>Census Tract</b>
o-o-o-o-o	BLOCK <sup>2</sup>

**ABBREVIATION REFERENCE:** AIR = American Indian Reservation; Trust Land = Off-Reservation Trust Land; Home Land = Hawaiian Home Land; OTSA = Oklahoma Tribal Statistical Area; TDSA = Tribal Designated Statistical Area; ANVSA = Alaska Native Village Statistical Area; SDA/SA = State Designated American Indian Statistical Area; ANRC = Alaska Native Regional Corporation; CDP = Census Designated Place; Minor Civil Div. (MCD) = Minor Civil Division; CCD = Census County Division

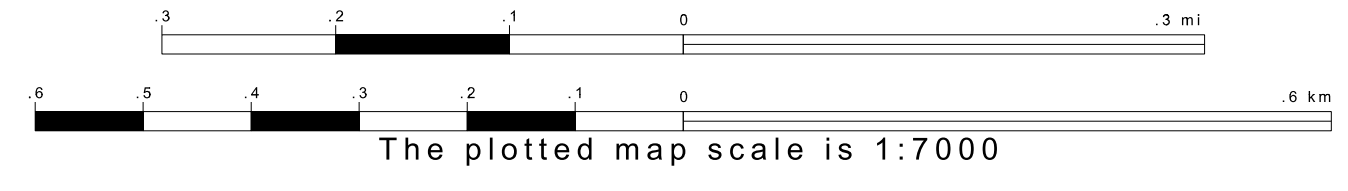
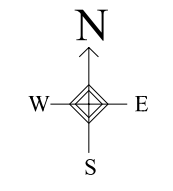
**FEATURES**

Highway	Pipe/Power Line	Stream/Shoreline
Secondary Road	Ridge/Physical Feature	Intermittent Stream
Deep Trail/Pathway/Ferry	Property/Fence Line	River/Lake
Railroad	Nonvisible Boundary	Glacier

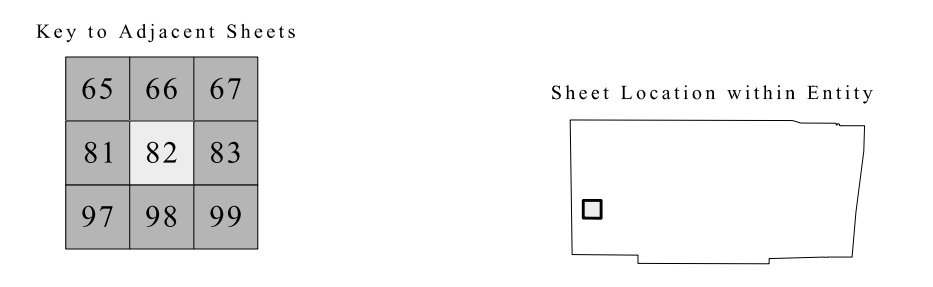
Where international, state, and/or county boundaries coincide, the map shows the boundary symbol for only the highest-ranking of these boundaries.  
<sup>1</sup> A "\*" following a place name indicates that the place is coterminous with a MCD. A "1" indicates that the place is also a false MCD; the false MCD name is not shown.  
<sup>2</sup> A "1" following a block number indicates that the block number is repeated elsewhere in the block.

26 078660N  
80 841307W

26 078660N  
80 788900W



ENTITY TYPE: County  
 NAME: Broward County (011)  
 ST: Florida (12)



SHEET 82 OF 141 PARENT SHEETS  
 TOTAL SHEETS: 146 (Index 1; Parent 141; Inset 4)

All legal boundaries and names are as of January 1, 2000. The boundaries shown on this map are for Census Bureau statistical data collection and tabulation purposes only; their depiction and designation for statistical purposes does not constitute a determination of jurisdictional authority or rights of ownership or entitlement. Source: U.S. Census Bureau's TIGER database (Census 2000). Projection: State-based Albers Equal Area. U.S. DEPARTMENT OF COMMERCE Economics and Statistics Administration U.S. Census Bureau

