

CENSUS 2000 BLOCK MAP: HENDRY County

LEGEND

SYMBOL	NAME/STYLE
*****	INTERNATIONAL
*****	AIR (FEDERAL)
*****	Trust Land / Home Land
*****	OTSA / TDSA / ANVSA
*****	AMERICAN INDIAN TRIBAL SUBDIVISION
//////	AIR (State)
◇◇◇◇◇	SDA/SA
▽▽▽▽▽	ANRC
//////	STATE (or statistically equivalent entity)
□□□□□	COUNTY (or statistically equivalent entity)
●●●●●	MINOR CIVIL DIV. / CCD ¹
○	Consolidated City
○	Place within Subject Entity
■	Incorporated Place / CDP ¹
■	Place outside of Subject Entity
■	Incorporated Place / CDP ¹
---	Corporate Offset Boundary
---	Census Tract
---	Block²

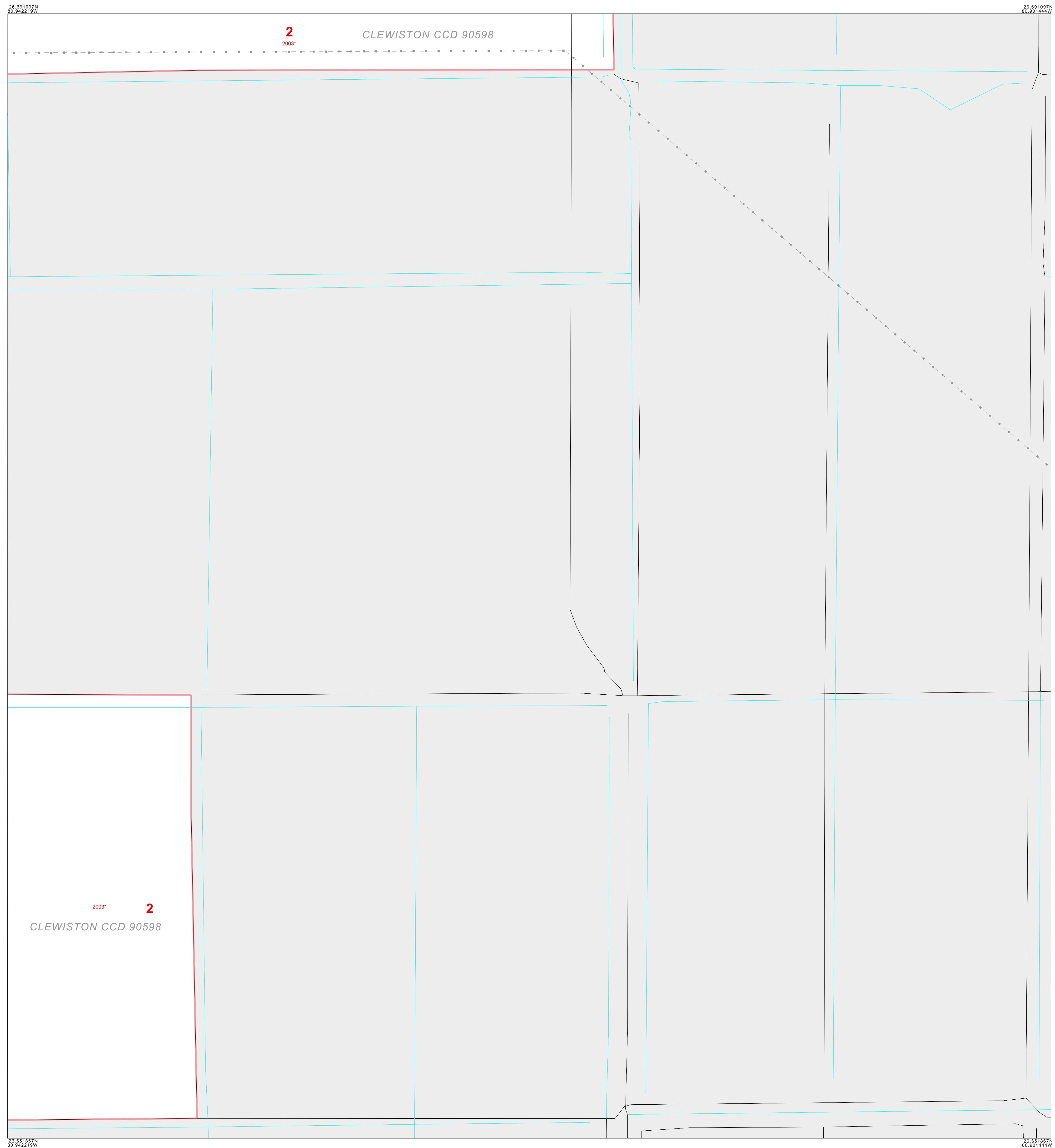
ABBREVIATION REFERENCE: AIR = American Indian Reservation; Trust Land = Off-Reservation Trust Land; Home Land = Hawaiian Home Land; OTSA = Oklahoma Tribal Statistical Area; TDSA = Tribal Designated Statistical Area; ANVSA = Alaska Native Village Statistical Area; SDA/SA = State Designated American Indian Statistical Area; ANRC = Alaska Native Regional Corporation; CDP = Census Designated Place; Minor Civil Div. (MCD) = Minor Civil Division; CCD = Census County Division

FEATURES

Highway	Pipe/Power Line	Stream/Shoreline
Secondary Road	Ridge/Physical Feature	Intermittent Stream
Deep Trail/Pathway/Ferry	Property/Fence Line	River/Lake
Railroad	Nonvisible Boundary	Glacier

Inset Area

Where international, state, and/or county boundaries coincide, the map shows the boundary symbol for only the highest-ranking of these boundaries.
¹ A "*" following a place name indicates that the place is coterminous with a MCD. A "†" indicates that the place is also a false MCD; the false MCD name is not shown.
² A "†" following a block number indicates that the block number is repeated elsewhere in the block.



Key to Adjacent Sheets

E07	E08
E11	E12

Sheet Location within Entity

INSET SHEET E12 of E12
 TOTAL SHEETS: 42 (Index 1; Parent 21; Inset 20)