

CENSUS 2000 BLOCK MAP: LEE County

LEGEND

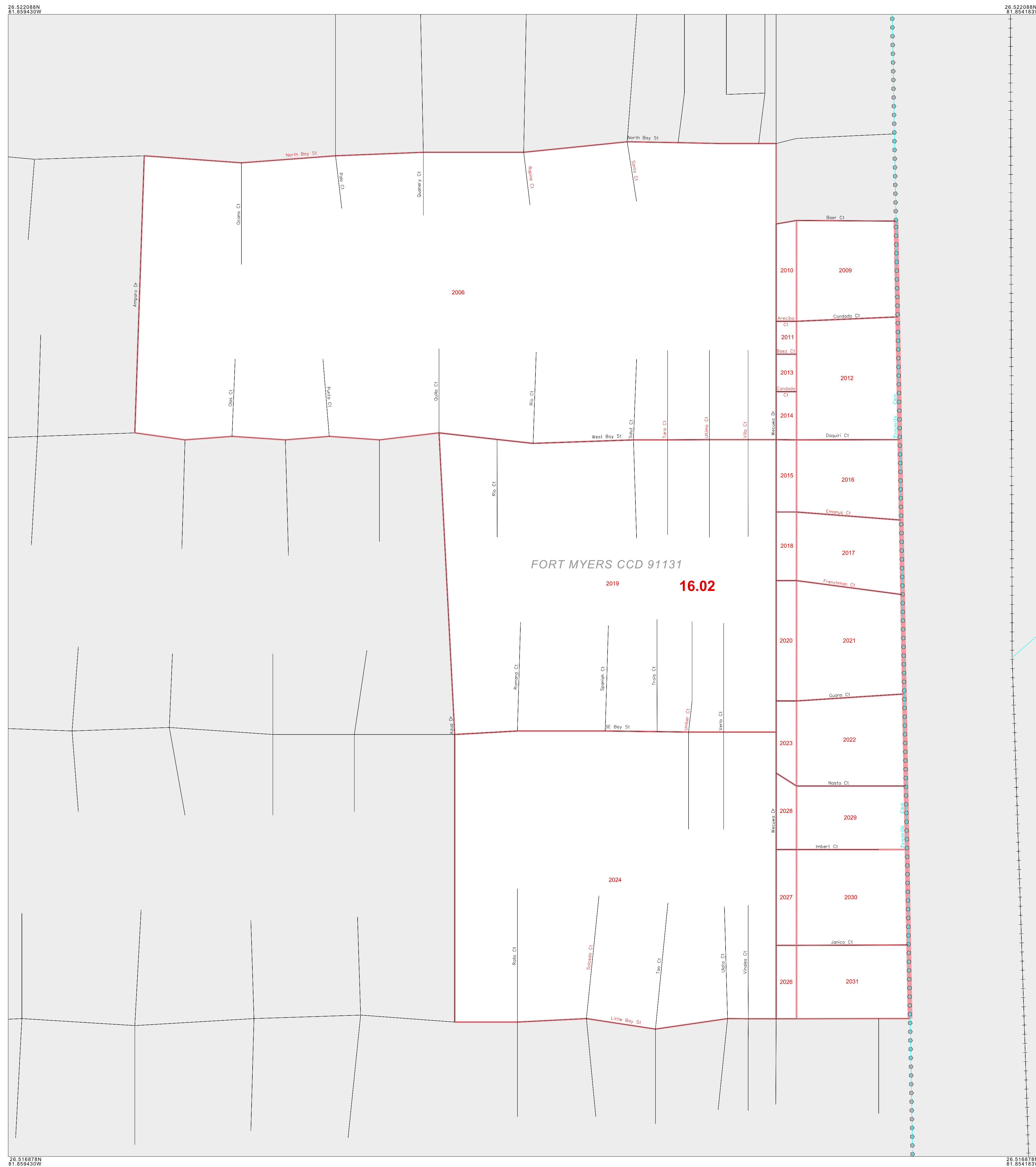
SYMBOL	NAME/STYLE
*****	INTERNATIONAL
*****	AIR (FEDERAL)
*****	Trust Land / Home Land
*****	OTSA / TDSA / ANVSA
*****	AMERICAN INDIAN TRIBAL SUBDIVISION
//////	AIR (State)
◇◇◇◇◇	SDA/ISA
▽▽▽▽▽	ANRC
//////	STATE (or statistically equivalent entity)
□□□□□	COUNTY (or statistically equivalent entity)
○	MINOR CIVIL DIV. / CCD ¹
○	Consolidated City
○	Place within Subject Entity
○	Incorporated Place / CDP ¹
○	Place outside of Subject Entity
○	Incorporated Place / CDP ¹
---	Corporate Offset Boundary
---	Census Tract
---	BLOCK²

ABBREVIATION REFERENCE: AIR = American Indian Reservation; Trust Land = Off-Reservation Trust Land; Home Land = Bayesian Home Land; OTSA = Oklahoma Tribal Statistical Area; TDSA = Tribal Designated Statistical Area; ANVSA = Alaska Native Village Statistical Area; SDA/ISA = State Designated American Indian Statistical Area; ANRC = Alaska Native Regional Corporation; CDP = Census Designated Place; Minor Civil Div. (MCD) = Minor Civil Division; CCD = Census County Division

FEATURES

Highway	Pipe/Power Line	Stream/Shoreline
Secondary Road	Ridge/Physical Feature	Intermittent Stream
Deep Trail/Pathway/Ferry	Property/Fence Line	River/Lake
Railroad	Nonvisible Boundary	Glacier

Where international, state, and/or county boundaries coincide, the map shows the boundary symbol for only the highest-ranking of these boundaries.
¹ A "*" following a place name indicates that the place is coterminous with a MCD. A "C" indicates that the place is also a false MCD; the false MCD name is not shown.
² A "1" following a block number indicates that the block number is repeated elsewhere in the block.



26.516878N
81.859430W

26.522088N
81.854183W

26.516878N
81.854183W

26.516878N
81.859430W

0 10 20 30 40 50 60 70 80 90 yd

0 10 20 30 40 50 60 70 80 m

The plotted map scale is 1:1000

ENTITY TYPE: County
 NAME: Lee County (071)
 ST: Florida (12)

CENSUS 2000 BLOCK MAP
 (2RGUCOU) 4211207168010000000

Key to Adjacent Sheets

Sheet Location within Entity

INSET SHEET D01 of D01
 TOTAL SHEETS: 96 (Index 1; Parent 89; Inset 6)

All legal boundaries and names are as of January 1, 2000. The boundaries shown on this map are for Census Bureau statistical data collection and tabulation purposes only; their depiction and designation for statistical purposes does not constitute a determination of jurisdictional authority or rights of ownership or entitlement. Source: U.S. Census Bureau's TIGER database (Census 2000). Projection: State-based Albers Equal Area. U.S. DEPARTMENT OF COMMERCE Economics and Statistics Administration U.S. Census Bureau