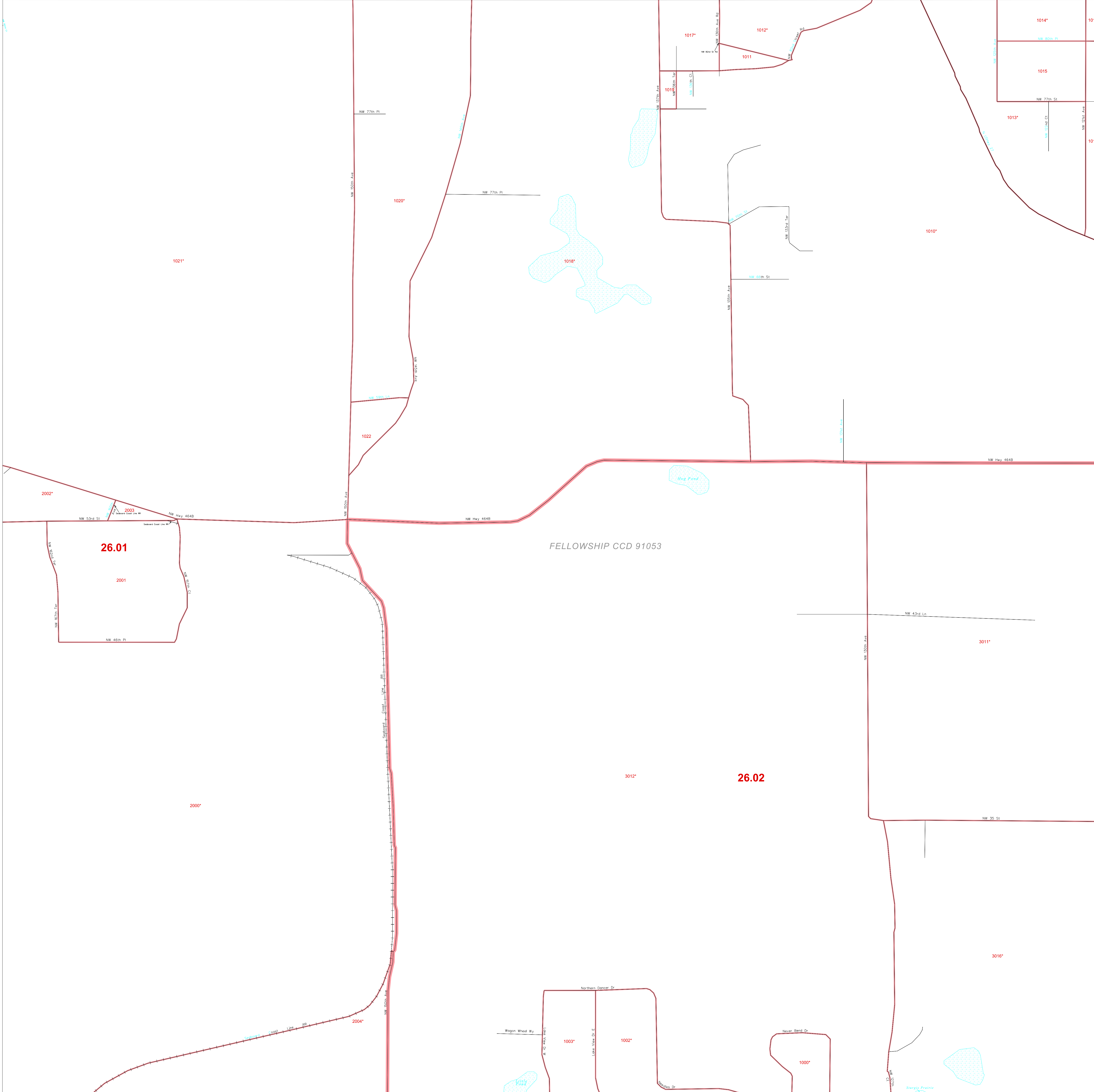


CENSUS 2000 BLOCK MAP: MARION County

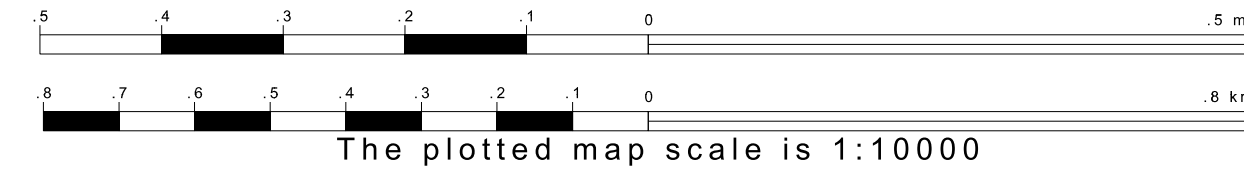
29 274122N
82 395270W

29 274122N
82 395270W

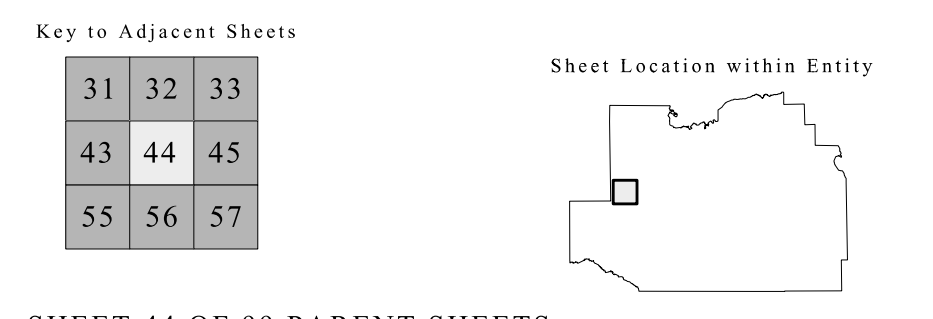


29 274122N
82 395270W

29 274122N
82 395270W



ENTITY TYPE: County
 NAME: Marion County (083)
 ST: Florida (12)



SHEET 44 OF 99 PARENT SHEETS
 TOTAL SHEETS: 108 (Index 1; Parent 99; Inset 8)

All legal boundaries and names are as of January 1, 2000. The boundaries shown on this map are for Census Bureau statistical data collection and tabulation purposes only; their depiction and designation for statistical purposes does not constitute a determination of jurisdictional authority or rights of ownership or entitlement. Source: U.S. Census Bureau's TIGER database (Census 2000). Projection: State-based Albers' Equal Area. U.S. DEPARTMENT OF COMMERCE Economics and Statistics Administration U.S. Census Bureau

