

CENSUS 2000 BLOCK MAP: MIAMI-DADE County

25 886032N  
80.822599W

25 886032N  
80.770580W

### LEGEND

SYMBOL	NAME STYLE
*****	INTERNATIONAL
*****	AIR (FEDERAL)
*****	Trust Land / Home Land
*****	OTSA / TDSA / ANVSA
*****	AMERICAN INDIAN TRIBAL SUBDIVISION
//////	AIR (State)
◇◇◇◇◇◇	SDA/SA
▽△▽△▽△	ANRC
//////	STATE (or statistically equivalent entity)
■■■■■■	COUNTY (or statistically equivalent entity)
●●●●●●	MINOR CIVIL DIV. / CCD <sup>1</sup>
○●○●○●	Consolidated City
■	Place within Subject Entity
■	Incorporated Place / CDP <sup>1</sup>
■	Place outside of Subject Entity
■	Incorporated Place / CDP <sup>1</sup>
-----	Corporate Offset Boundary
=====	Census Tract
=====	BLOCK <sup>2</sup>

ABBREVIATION REFERENCE: AIR = American Indian Reservation; Trust Land = Off-Reservation Trust Land; Home Land = Hawaiian Home Land; OTSA = Oklahoma Tribal Statistical Area; TDSA = Tribal Designated Statistical Area; ANVSA = Alaska Native Village Statistical Area; SDA/SA = State Designated American Indian Statistical Area; ANRC = Alaska Native Regional Corporation; CDP = Census Designated Place; Minor Civil Div. (MCD) = Minor Civil Division; CCD = Census County Division

### FEATURES

Highway	Pipe/Power Line	Stream/Shoreline
Secondary Road	Ridge/Physical Feature	Intermittent Stream
Deep Trench/Quarry/Ferry	Property/Fence Line	River/Lake
Railroad	Nonvisible Boundary	Glacier

Where international, state, and/or county boundaries coincide, the map shows the boundary symbol for only the highest-ranking of these boundaries.  
<sup>1</sup> A " " following a place name indicates that the place is coterminous with a MCD. A " " indicates that the place is also a false MCD; the false MCD name is not shown.  
<sup>2</sup> A " " following a block number indicates that the block number is repeated elsewhere in the block.

115

EVERGLADES CCD 91040

3004\*

Key to Adjacent Sheets

16	17	18
31	32	33
46	47	48

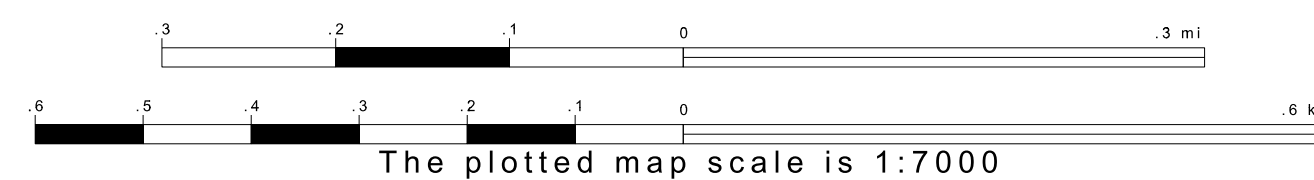
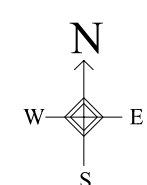
Sheet Location within Entity



SHEET 32 OF 226 PARENT SHEETS  
TOTAL SHEETS: 237 (Index 1; Parent 226; Inset 10)

25 830544N  
80.822599W

25 830544N  
80.770580W



ENTITY TYPE: County  
NAME: Miami-Dade County (086)  
ST: Florida (12)

