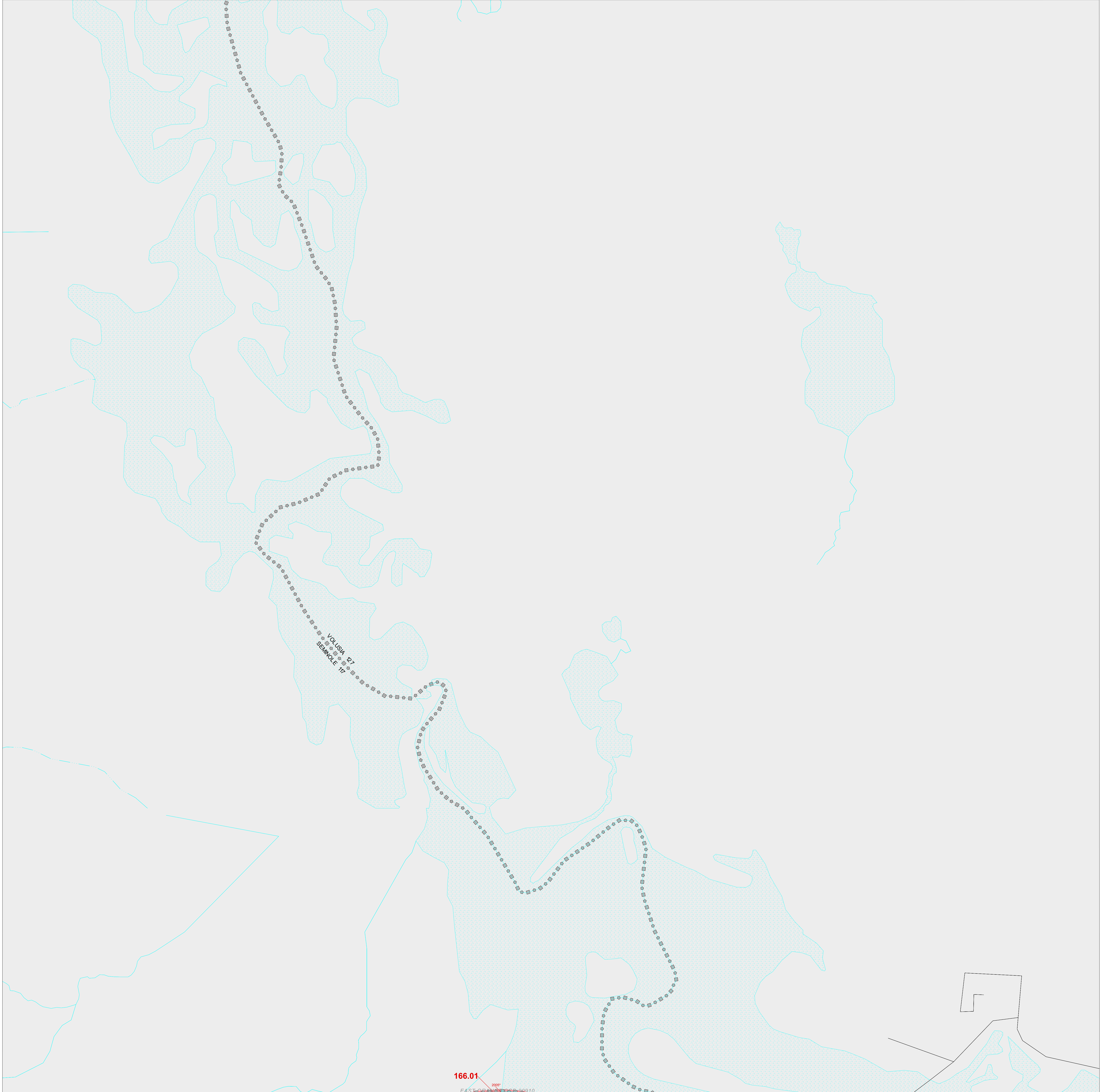


# CENSUS 2000 BLOCK MAP: ORANGE County

28 659871N  
81 019727W

28 659871N  
80 969207W



### LEGEND

SYMBOL	NAME STYLE
*****	INTERNATIONAL
*****	AIR (FEDERAL)
*****	Trust Land / Home Land
*****	OTSA / TDSA / ANVSA
*****	AMERICAN INDIAN TRIBAL SUBDIVISION
*****	AIR (State)
*****	SDAISA
*****	ANRC
//////	STATE (or statistically equivalent entity)
	COUNTY (or statistically equivalent entity)
	MINOR CIVIL DIV. / CCD <sup>1</sup>
	Consolidated City
	Place within Subject Entity
	Incorporated Place / CDP <sup>1</sup>
	Place outside of Subject Entity
	Incorporated Place / CDP <sup>1</sup>
.....	Corporate Offset Boundary
————	<b>Census Tract</b>
————	<b>Block<sup>2</sup></b>

ABBREVIATION REFERENCE: AIR = American Indian Reservation; Trust Land = Off-Reservation Trust Land; Home Land = Hawaiian Home Land; OTSA = Oklahoma Tribal Statistical Area; TDSA = Tribal Designated Statistical Area; ANVSA = Alaska Native Village Statistical Area; SDAISA = State Designated American Indian Statistical Area; ANRC = Alaska Native Regional Corporation; CDP = Census Designated Place; Minor Civil Div. (MCD) = Minor Civil Division; CCD = Census County Division

### FEATURES

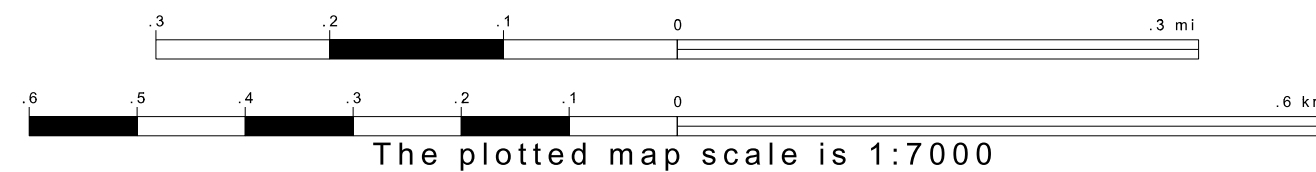
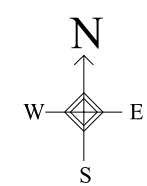
Highway	Pipe/Power Line	Stream/Shoreline
Secondary Road	Ridge/Physical Feature	Intermittent Stream
Deep Trail/Highway/Ferry	Property/Fence Line	River/Lake
Railroad	Nonvisible Boundary	Glacier

Inset Out Area

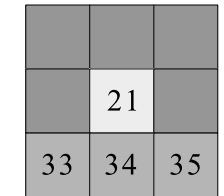
Where international, state, and/or county boundaries coincide, the map shows the boundary symbol for only the highest-ranking of these boundaries.  
<sup>1</sup> A " " following a place name indicates that the place is consecutive with a MCD. A " " indicates that the place is also a false MCD; the false MCD name is not shown.  
<sup>2</sup> A " " following a block number indicates that the block number is repeated elsewhere in the block.

28 613101N  
81 019727W

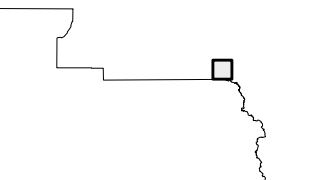
28 613101N  
80 969207W



Key to Adjacent Sheets



Sheet Location within Entity



SHEET 21 OF 110 PARENT SHEETS  
TOTAL SHEETS: 133 (Index 1; Parent 110; Inset 22)

ENTITY TYPE: County  
NAME: Orange County (095)  
ST: Florida (12)

