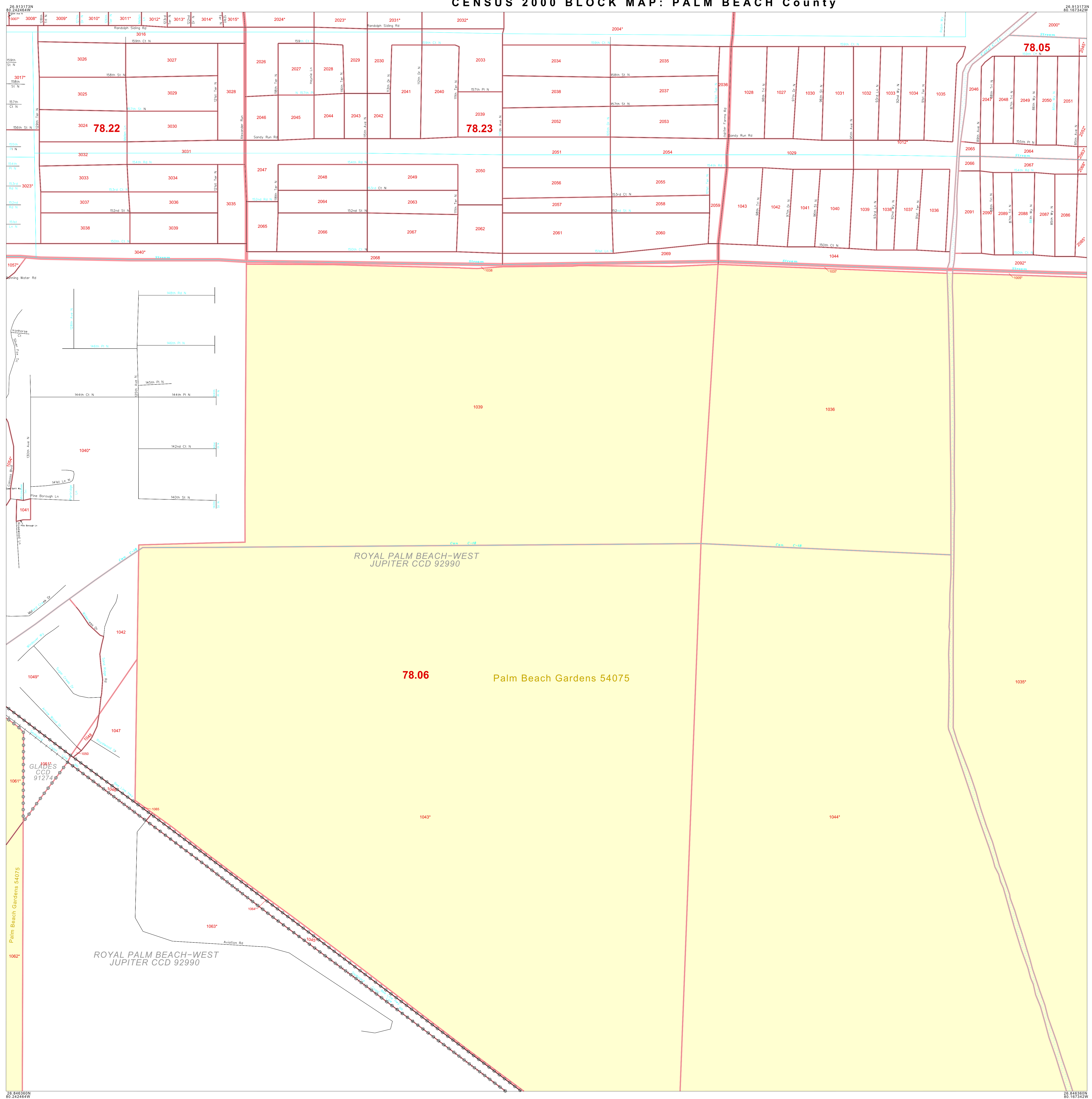


CENSUS 2000 BLOCK MAP: PALM BEACH County



LEGEND

SYMBOL NAME STYLE

- ***** INTERNATIONAL
- ***** AIR (FEDERAL)
- ***** Trust Land / Home Land
- ***** OTSA / TDSA / ANVSA
- ***** AMERICAN INDIAN TRIBAL SUBDIVISION
- ***** AIR (State)
- ***** SDA/ISA
- ***** ANRC
- STATE (or statistically equivalent entity)
- COUNTY (or statistically equivalent entity)
- MINOR CIVIL DIV. / CCD¹
- Consolidated City
- Place within Subject Entity
- Incorporated Place / CDP¹
- Place outside of Subject Entity
- Incorporated Place / CDP¹
- Corporate Offset Boundary
- Census Tract**
- BLOCK²**

ABBREVIATION REFERENCE: AIR = American Indian Reservation; Trust Land = Off-Reservation Trust Land; Home Land = Hawaiian Home Land; OTSA = Oklahoma Tribal Statistical Area; TDSA = Tribal Designated Statistical Area; ANVSA = Alaska Native Village Statistical Area; SDA/ISA = State Designated American Indian Statistical Area; ANRC = Alaska Native Regional Corporation; CDP = Census Designated Place; Minor Civil Div. (MCD) = Minor Civil Division; CCD = Census County Division

FEATURES

- Highway
- Secondary Road
- Deep Trail/Highway/Ferry
- Roadway
- Pipe/Power Line
- Ridge/Physical Feature
- Property/Fence Line
- Nonvisible Boundary
- Stream/Shoreline
- Intermittent Stream
- River/Arroyo
- Glacier

Where international, state, and/or county boundaries coincide, the map shows the boundary symbol for only the highest-ranking of these boundaries.
¹ A "*" following a place name indicates that the place is coextensive with a MCD. A "*" following a block number indicates that the block number is repeated elsewhere in the block.
² A "*" following a block number indicates that the block number is repeated elsewhere in the block.

Inset Out Area

Key to Adjacent Sheets

5	6	7
14	15	16
24	25	26

Sheet Location within Entity

SHEET 15 OF 111 PARENT SHEETS
 TOTAL SHEETS: 133 (Index 1; Parent 111; Inset 21)



ENTITY TYPE: County
 NAME: Palm Beach County (099)
 ST: Florida (12)



All legal boundaries and names are as of January 1, 2000. The boundaries shown on this map are for Census Bureau statistical data collection and tabulation purposes only; their depiction and designation for statistical purposes does not constitute a determination of jurisdictional authority or rights of ownership or entitlement. Source: U.S. Census Bureau's TIGER database (Census 2000) Projection: State-based Albers' Equal Area U.S. DEPARTMENT OF COMMERCE Economics and Statistics Administration U.S. Census Bureau