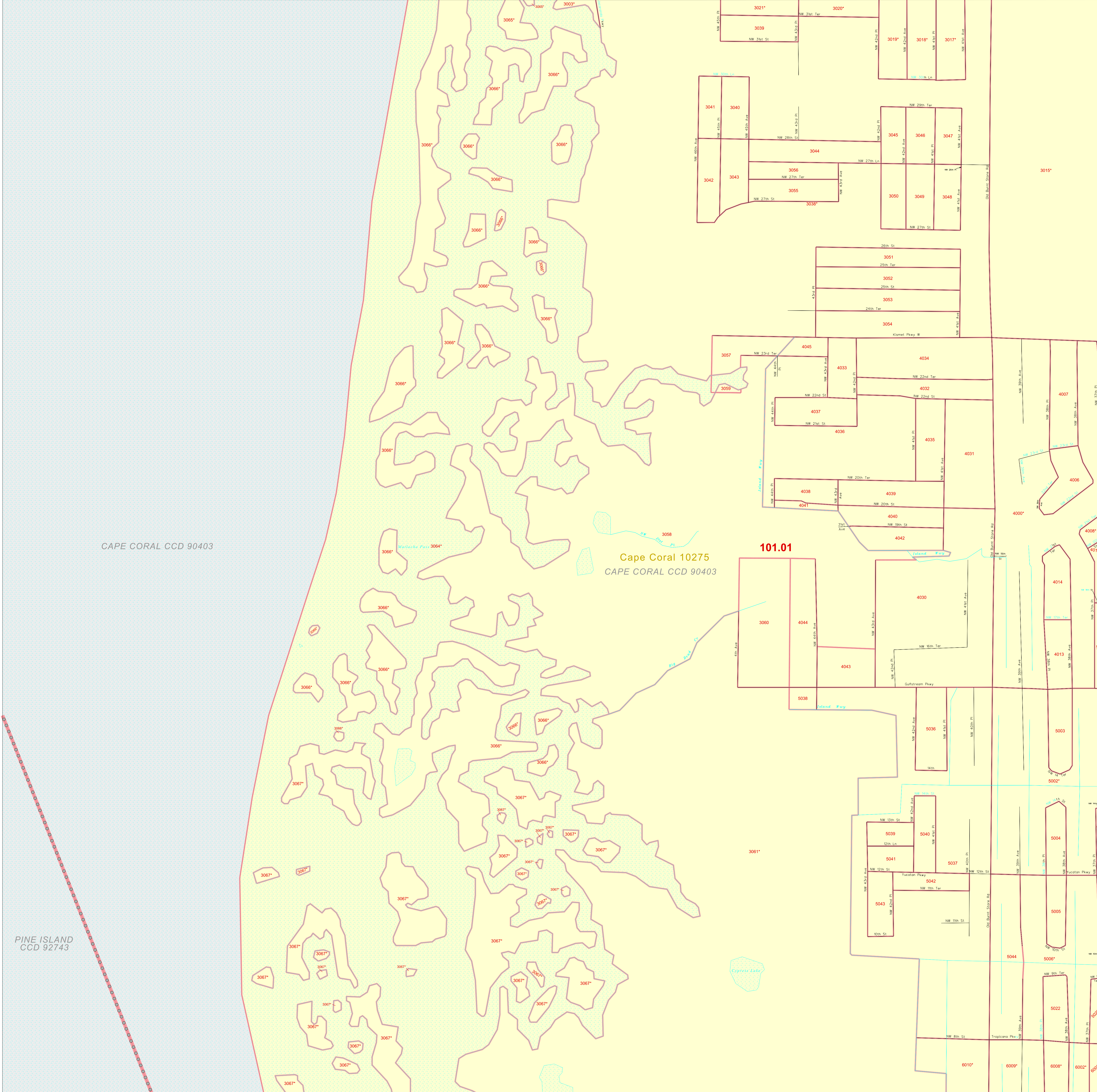


CENSUS 2000 BLOCK MAP: CAPE CORAL City

26 711822N  
82 103181W

26 711822N  
82 050494W



**LEGEND**

SYMBOL	NAME STYLE
*****	INTERNATIONAL
*****	AIR (FEDERAL)
*****	Trust Land / Home Land
*****	OTSA / TDSA / ANVSA
*****	AMERICAN INDIAN TRIBAL SUBDIVISION
*****	AIR (State)
*****	SDA/SA
*****	ANRC
//////	STATE (or statistically equivalent entity)
	COUNTY (or statistically equivalent entity)
	MINOR CIVIL DIV. / CCD <sup>1</sup>
	Consolidated City
	Place within Subject Entity
	Incorporated Place / CDP <sup>1</sup>
	Place outside of Subject Entity
	Incorporated Place / CDP <sup>1</sup>
.....	Corporate Offset Boundary
.....	<b>Census Tract</b>
.....	<b>Block<sup>2</sup></b>

**ABBREVIATION REFERENCE:** AIR = American Indian Reservation; Trust Land = Off-Reservation Trust Land; Home Land = Hawaiian Home Land; OTSA = Oklahoma Tribal Statistical Area; TDSA = Tribal Designated Statistical Area; ANVSA = Alaska Native Village Statistical Area; SDASA = State Designated American Indian Statistical Area; ANRC = Alaska Native Regional Corporation; CDP = Census Designated Place; Minor Civil Div. (MCD) = Minor Civil Division; CCD = Census County Division

**FEATURES**

Highway	Pipe/Power Line	Stream/Shoreline
Secondary Road	Ridge/Physical Feature	Intermittent Stream
Deep Trail/Highway/Ferry	Property/Fence Line	River/Lake
Railroad	Nonvisible Boundary	Glacier

Where international, state, and/or county boundaries coincide, the map shows the boundary symbol for only the highest-ranking of these boundaries.  
<sup>1</sup> A " " following a place name indicates that the place is consecutive with a minor civil division.  
<sup>2</sup> A " " following a block number indicates that the block number is repeated elsewhere in the block.

**Inset** **Out Area**

CAPE CORAL CCD 90403

Cape Coral 10275  
CAPE CORAL CCD 90403

101.01

PINE ISLAND  
CCD 92743

Key to Adjacent Sheets

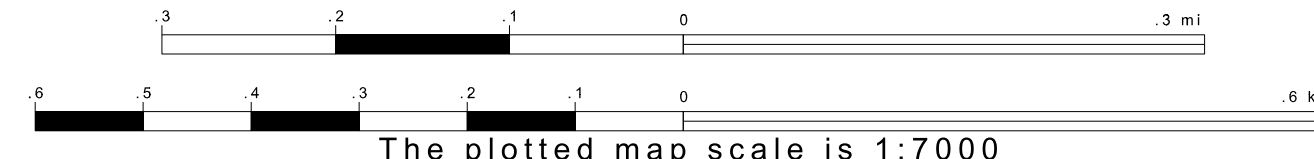
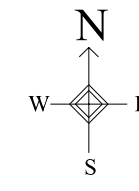
1	2
5	6
9	10

Sheet Location within Entity

SHEET 5 OF 20 PARENT SHEETS  
TOTAL SHEETS: 21 (Index 1; Parent 20; Inset 0)

26 711822N  
82 103181W

26 711822N  
82 050494W



ENTITY TYPE: Incorporated Place  
NAME: Cape Coral city (10275)  
ST: Florida (12)  
CO: Lee Co (071)



All legal boundaries and names are as of January 1, 2000. The boundaries shown on this map are for Census Bureau statistical data collection and tabulation purposes only; their depiction and designation for statistical purposes does not constitute a determination of jurisdictional authority or rights of ownership or entitlement. Source: U.S. Census Bureau's TIGER database (Census 2000) Projection: State-based Albers' Equal Area U.S. DEPARTMENT OF COMMERCE Economics and Statistics Administration U.S. Census Bureau