

# CENSUS 2000 BLOCK MAP: POWDER RIVER County

### LEGEND

SYMBOL	NAME STYLE
*****	INTERNATIONAL
*****	AIR (FEDERAL)
*****	Trust Land / Home Land
*****	OTSA / TDSA / ANVSA
*****	AMERICAN INDIAN TRIBAL SUBDIVISION
//////	AIR (State)
◇◇◇◇◇	SDAISA
▽▽▽▽▽	ANRC
//////	STATE (or statistically equivalent entity)
■■■■■	COUNTY (or statistically equivalent entity)
●●●●●	MINOR CIVIL DIV. / CCD <sup>1</sup>
○	Consolidated City
□	Place within Subject Entity
■	Incorporated Place / CDP <sup>1</sup>
□	Place outside of Subject Entity
■	Incorporated Place / CDP <sup>1</sup>
-----	Corporate Offset Boundary
-----	<b>Census Tract</b>
-----	<b>BLOCK<sup>2</sup></b>

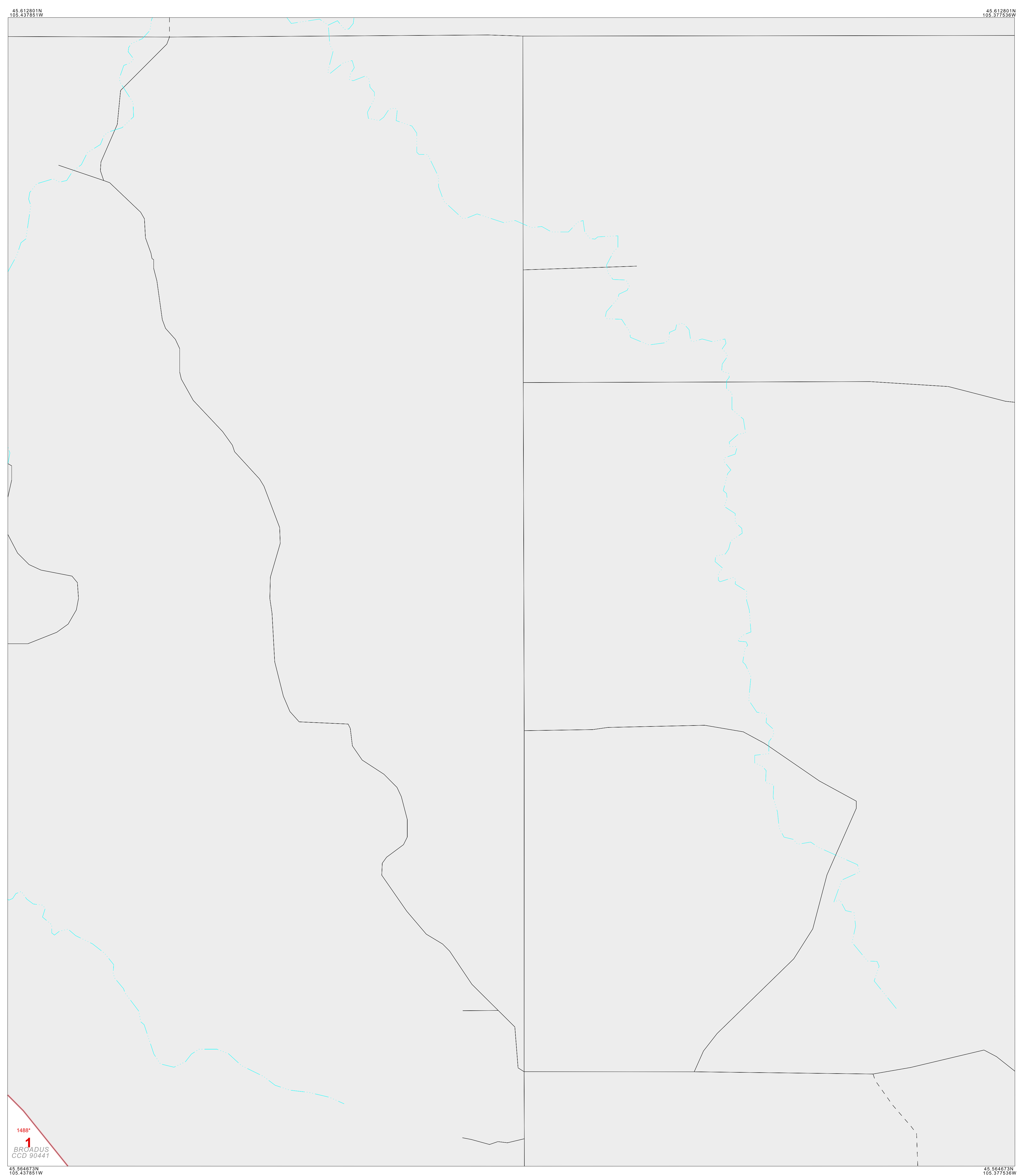
**ABBREVIATION REFERENCE:** AIR = American Indian Reservation; Trust Land = Off-Reservation Trust Land; Home Land = Hawaiian Home Land; OTSA = Oklahoma Tribal Statistical Area; TDSA = Tribal Designated Statistical Area; ANVSA = Alaska Native Village Statistical Area; SDAISA = State Designated American Indian Statistical Area; ANRC = Alaska Native Regional Corporation; CDP = Census Designated Place; Minor Civil Div. (MCD) = Minor Civil Division; CCD = Census County Division

### FEATURES

Highway	Pipe/Power Line	Stream/Shoreline
Secondary Road	Ridge/Physical Feature	Intermittent Stream
Deep Trail/Passway/Ferry	Property/Fence Line	River/Lake
Railroad	Nonvisible Boundary	Glacier

Inset    Out Area

Where international, state, and/or county boundaries coincide, the map shows the boundary symbol for only the highest-ranking of these boundaries.  
<sup>1</sup> A " " following a place name indicates that the place is coterminous with a MCD. A " " indicates that the place is also a false MCD; the false MCD name is not shown.  
<sup>2</sup> A " " following a block number indicates that the block number is repeated elsewhere in the block.



All legal boundaries and names are as of January 1, 2000. The boundaries shown on this map are for Census Bureau statistical data collection and tabulation purposes only; their depiction and designation for statistical purposes does not constitute a determination of jurisdictional authority or rights of ownership or entitlement. Source: U.S. Census Bureau's TIGER database (Census 2000) Projection: State-based Albers' Equal Area U.S. DEPARTMENT OF COMMERCE Economics and Statistics Administration U.S. Census Bureau

ENTITY TYPE: County  
 NAME: Powder River County (075)  
 ST: Montana (30)



Key to Adjacent Sheets

A02	A03
A05	A06

Sheet Location within Entity

INSET SHEET A03 of A15  
 TOTAL SHEETS: 41 (Index 1; Parent 25; Inset 15)

