

CENSUS 2000 BLOCK MAP: YELLOWSTONE County

LEGEND

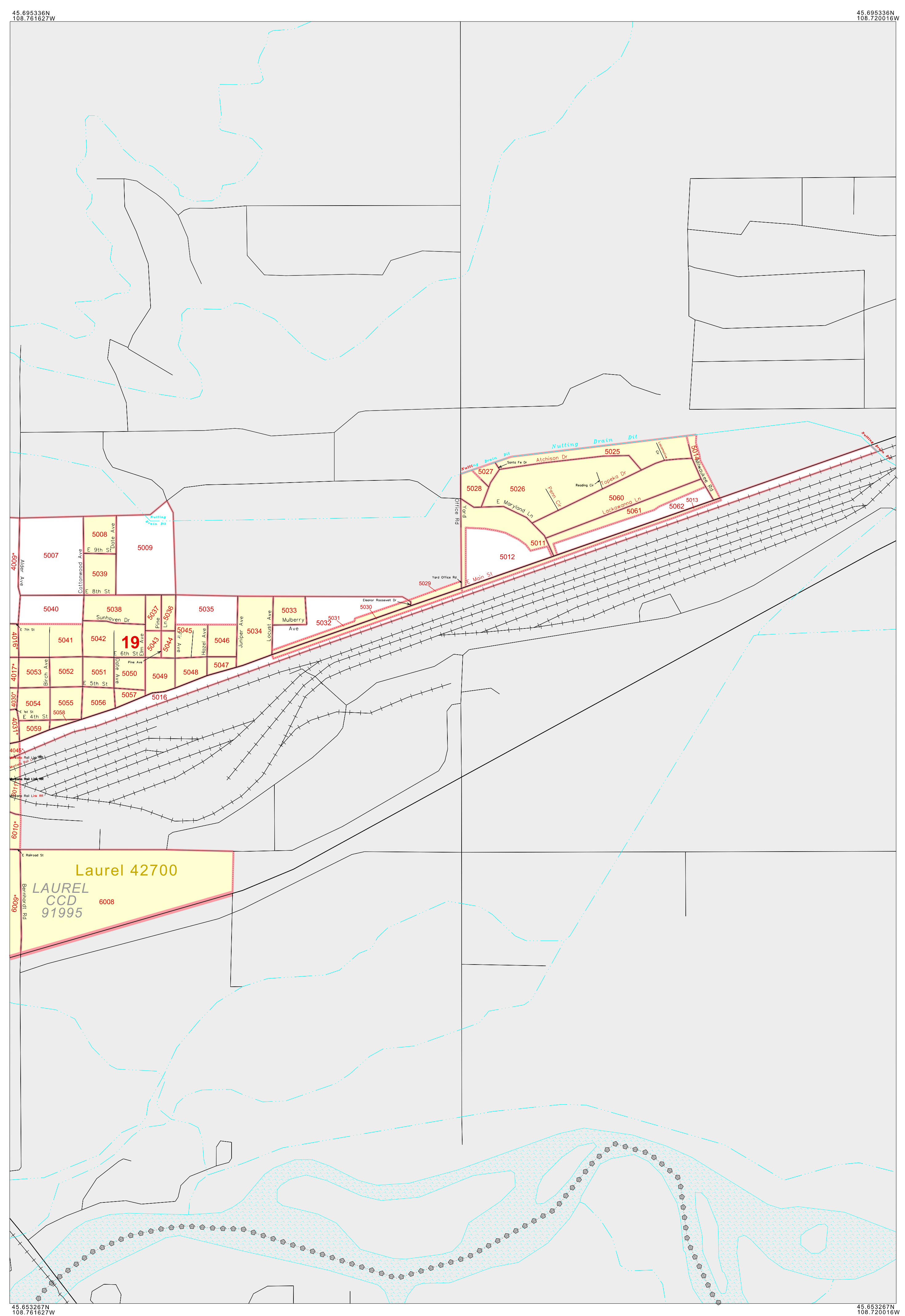
SYMBOL	NAME/STYLE
*****	INTERNATIONAL
*****	AIR (FEDERAL)
*****	Trust Land / Home Land
*****	OTSA / TDSA / ANVSA
*****	AMERICAN INDIAN TRIBAL SUBDIVISION
//////	AIR (State)
o-o-o-o-o	SDA/SA
▼▲▼▲▼▲	ANRC
	STATE (or statistically equivalent entity)
	COUNTY (or statistically equivalent entity)
o-o-o-o-o	MINOR CIVIL DIV. / CCD ¹
o-o-o-o-o	Consolidated City
o-o-o-o-o	Place within Subject Entity
o-o-o-o-o	Incorporated Place / CDP ¹
o-o-o-o-o	Place outside of Subject Entity
o-o-o-o-o	Incorporated Place / CDP ¹
o-o-o-o-o	Corporate Offset Boundary
o-o-o-o-o	Census Tract
o-o-o-o-o	BLOCK²

ABBREVIATION REFERENCE: AIR = American Indian Reservation; Trust Land = Off-Reservation Trust Land; Home Land = Hawaiian Home Land; OTSA = Oklahoma Tribal Statistical Area; TDSA = Tribal Designated Statistical Area; ANVSA = Alaska Native Village Statistical Area; SDA/SA = State Designated American Indian Statistical Area; ANRC = Alaska Native Regional Corporation; CDP = Census Designated Place; Minor Civil Div. (MCD) = Minor Civil Division; CCD = Census County Division

FEATURES

Highway	Pipe/Power Line	Stream/Shoreline
Secondary Road	Ridge/Physical Feature	Intermittent Stream
Deep Trail/Highway/Ferry	Property/Fence Line	River/Lake
Railroad	Nonvisible Boundary	Glacier

Where international, state, and/or county boundaries coincide, the map shows the boundary symbol for only the highest-ranking of these boundaries.
¹ A " " following a place name indicates that the place is coterminous with a MCD. A " " indicates that the place is also a false MCD; the false MCD name is not shown.
² A " " following a block number indicates that the block number is repeated elsewhere in the block.



The plotted map scale is 1:8500

ENTITY TYPE: County
 NAME: Yellowstone County (111)
 ST: Montana (30)

All legal boundaries and names are as of January 1, 2000. The boundaries shown on this map are for Census Bureau statistical data collection and tabulation purposes only; their depiction and designation for statistical purposes does not constitute a determination of jurisdictional authority or rights of ownership or entitlement. Source: U.S. Census Bureau's TIGER database (Census 2000). Projection: State-based Albers' Equal Area. U.S. DEPARTMENT OF COMMERCE Economics and Statistics Administration U.S. Census Bureau

Key to Adjacent Sheets

Sheet Location within Entity

INSET SHEET 102 of 102
TOTAL SHEETS: 70 (Index 1; Parent 45; Inset 24)

CENSUS 2000 BLOCK MAP
 (2RGUCOU)42130111330200000000