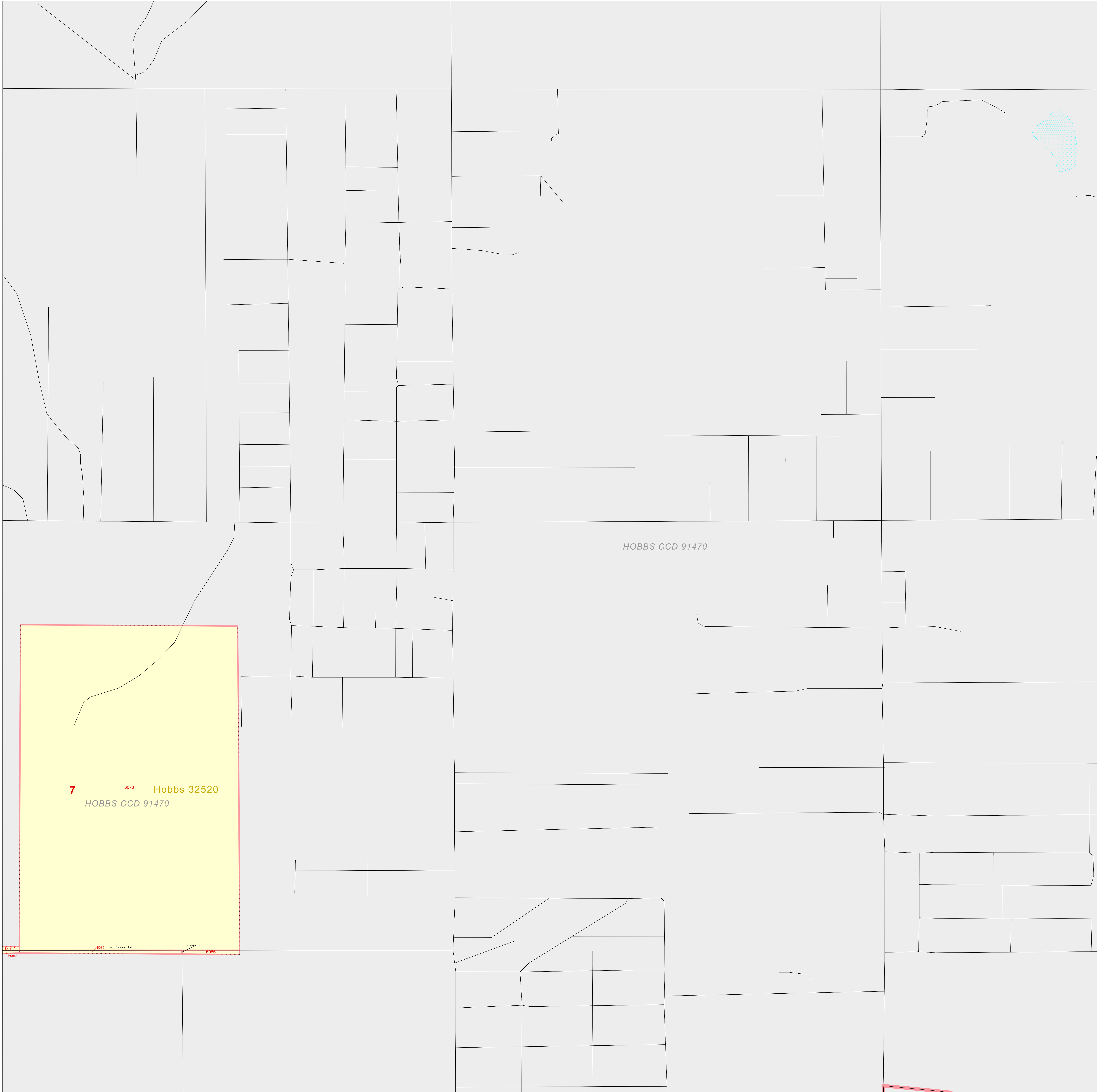


CENSUS 2000 BLOCKMAP: HOBBS City

32 801334N  
103 162860W

32 801334N  
103 162861W



**LEGEND**

SYMBOL	NAME STYLE
*****	INTERNATIONAL
*****	AIR (FEDERAL)
*****	Trust Land / Home Land
*****	OTSA / TDSA / ANVSA
*****	AMERICAN INDIAN TRIBAL SUBDIVISION
*****	AIR (State)
*****	SDAISA
*****	ANRC
*****	STATE (or statistically equivalent entity)
*****	COUNTY (or statistically equivalent entity)
*****	MINOR CIVIL DIV. / CCD <sup>1</sup>
*****	Consolidated City
*****	Place within Subject Entity
*****	Incorporated Place / CDP <sup>1</sup>
*****	Place outside of Subject Entity
*****	Incorporated Place / CDP <sup>1</sup>
*****	Corporate Offset Boundary
*****	<b>Census Tract</b>
*****	<b>Block<sup>2</sup></b>

**ABBREVIATION REFERENCE:** AIR = American Indian Reservation; Trust Land = Off-Reservation Trust Land; Home Land = Hawaiian Home Land; OTSA = Oklahoma Tribal Statistical Area; TDSA = Tribal Designated Statistical Area; ANVSA = Alaska Native Village Statistical Area; SDAISA = State Designated American Indian Statistical Area; ANRC = Alaska Native Regional Corporation; CDP = Census Designated Place; Minor Civil Div. (MCD) = Minor Civil Division; CCD = Census County Division

**FEATURES**

Highway	Pipe/Power Line	Stream/Shoreline
Secondary Road	Ridge/Physical Feature	Intermittent Stream
Deep Trail/Highway/Ferry	Property/Fence Line	River/Lake
Railroad	Nonvisible Boundary	Glacier

Where international, state, and/or county boundaries coincide, the map shows the boundary symbol for only the highest-ranking of these boundaries.  
<sup>1</sup> A " " following a place name indicates that the place is coterminous with a MCD. A " " indicates that the place is also a false MCD; the false MCD name is not shown.  
<sup>2</sup> A " " following a block number indicates that the block number is repeated elsewhere in the block.

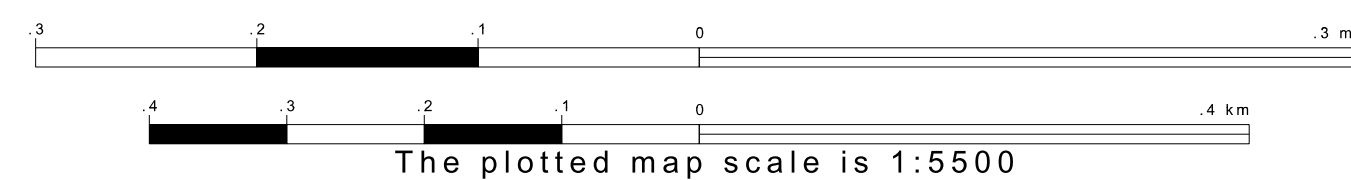
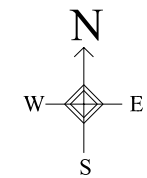
**Inset** **Out Area**

HOBBS CCD 91470

**7** 6073 Hobbs 32520  
HOBBS CCD 91470

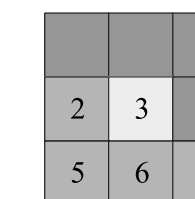
32 764513N  
103 162860W

32 764513N  
103 162861W



ENTITY TYPE: Incorporated Place  
 NAME: Hobbs city (32520)  
 ST: New Mexico (35)  
 CO: Lea Co (025)

Key to Adjacent Sheets



Sheet Location within Entity



SHEET 3 OF 13 PARENT SHEETS  
 TOTAL SHEETS: 14 (Index 1; Parent 13; Inset 0)