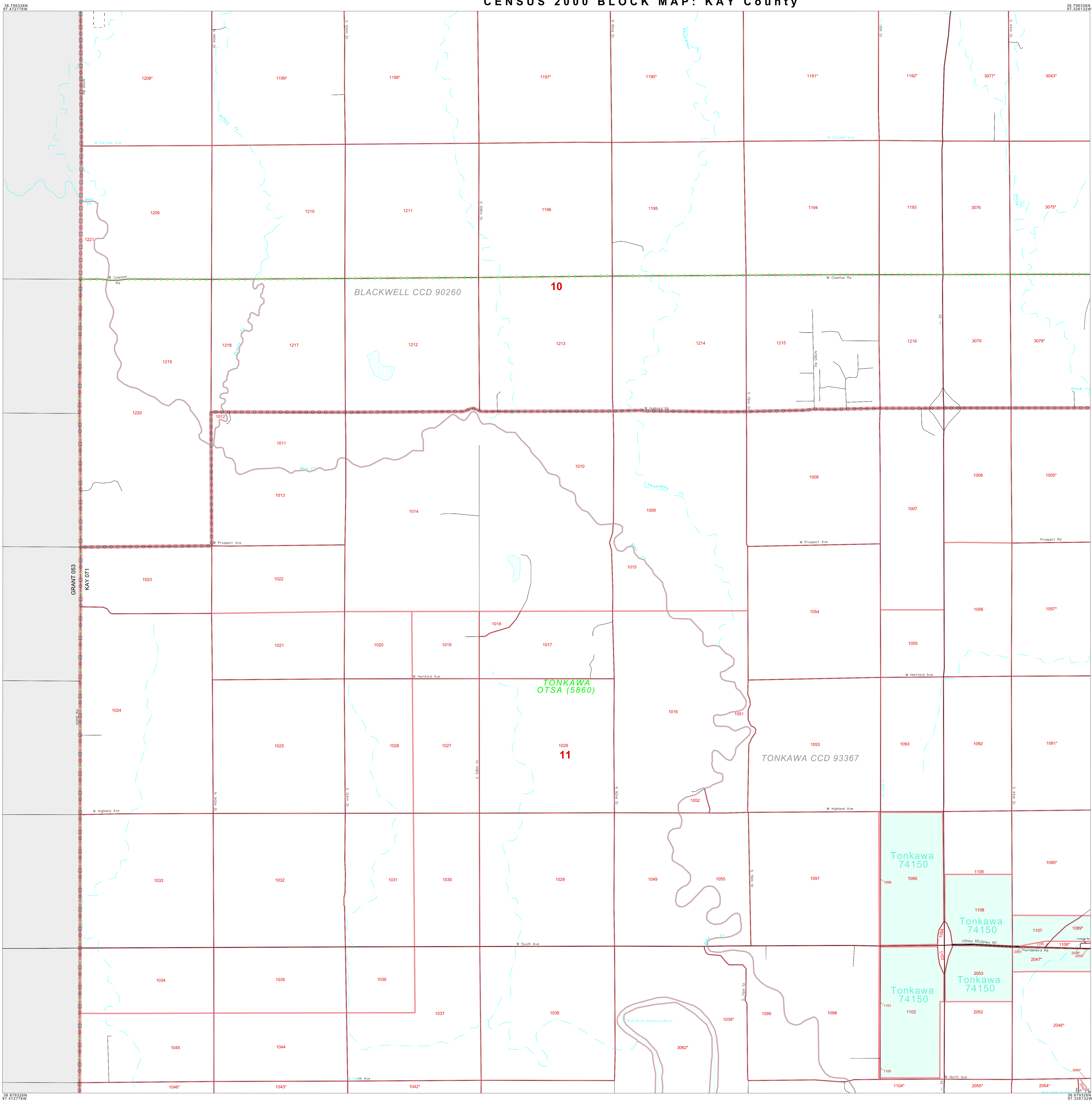


CENSUS 2000 BLOCKMAP: KAY County



LEGEND
SYMBOL NAME STYLE
INTERNATIONAL
AIR (FEDERAL)
Trust Land / Home Land
OTSA / TDSA / ANVSA
AMERICAN INDIAN TRIBAL SUBDIVISION
AIR (State)
SDA/SA
ANRC
STATE (or statistically equivalent entity)
COUNTY (or statistically equivalent entity)
MINOR CIVIL DIV. / CCD¹
Consolidated City
Place within Subject Entity
Incorporated Place / CDP¹
Place outside of Subject Entity
Incorporated Place / CDP¹
Corporate Offset Boundary
Census Tract
BLOCK²

ABBREVIATION REFERENCE: AIR = American Indian Reservation; Trust Land = Off-Reservation Trust Land; Home Land = Hawaiian Home Land; OTSA = Oklahoma Tribal Statistical Area; TDSA = Tribal Designated Statistical Area; ANVSA = Alaska Native Village Statistical Area; SDA/SA = State Designated American Indian Statistical Area; ANRC = Alaska Native Regional Corporation; CDP = Census Designated Place; Minor Civil Div. (MCD) = Minor Civil Division; CCD = Census County Division

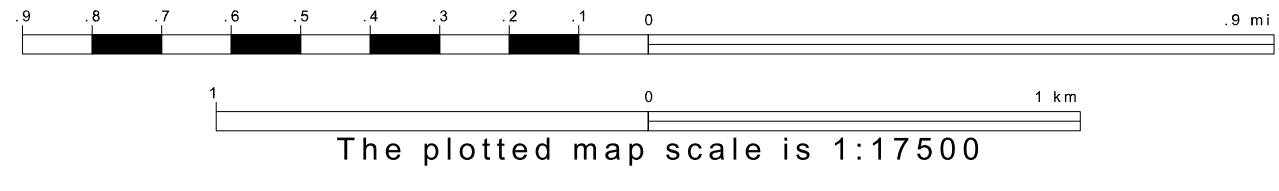
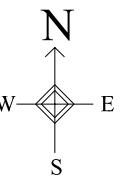
FEATURES
Highway
Secondary Road
Deep Trail/Highway/Ferry
Railroad
Pipe/Power Line
Ridge/Physical Feature
Property/Fence Line
Nonvisible Boundary
Stream/Shoreline
Intermittent Stream
River/Lake
Creeper

Where international, state, and/or county boundaries coincide, the map shows the boundary symbol for only the highest-ranking of these boundaries.
¹ A " " following a place name indicates that the place is consecutive with a MCD. A " " indicates that the place is also a false MCD; the false MCD name is not shown.
² A " " following a block number indicates that the block number is repeated elsewhere in the block.

Key to Adjacent Sheets
6 7
11 12
16 17
Sheet Location within Entity

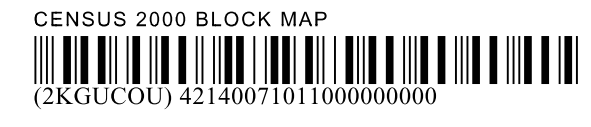
SHEET 11 OF 18 PARENT SHEETS
TOTAL SHEETS: 27 (Index 1; Parent 18; Inset 8)

36 796336N
97 422776W



The plotted map scale is 1:17500

ENTITY TYPE: County
NAME: Kay County (071)
ST: Oklahoma (40)



All legal boundaries and names are as of January 1, 2000. The boundaries shown on this map are for Census Bureau statistical data collection and tabulation purposes only; their depiction and designation for statistical purposes does not constitute a determination of jurisdictional authority or rights of ownership or entitlement. Source: U.S. Census Bureau's TIGER database (Census 2000) Projection: State-based Albers' Equal Area U.S. DEPARTMENT OF COMMERCE Economics and Statistics Administration U.S. Census Bureau