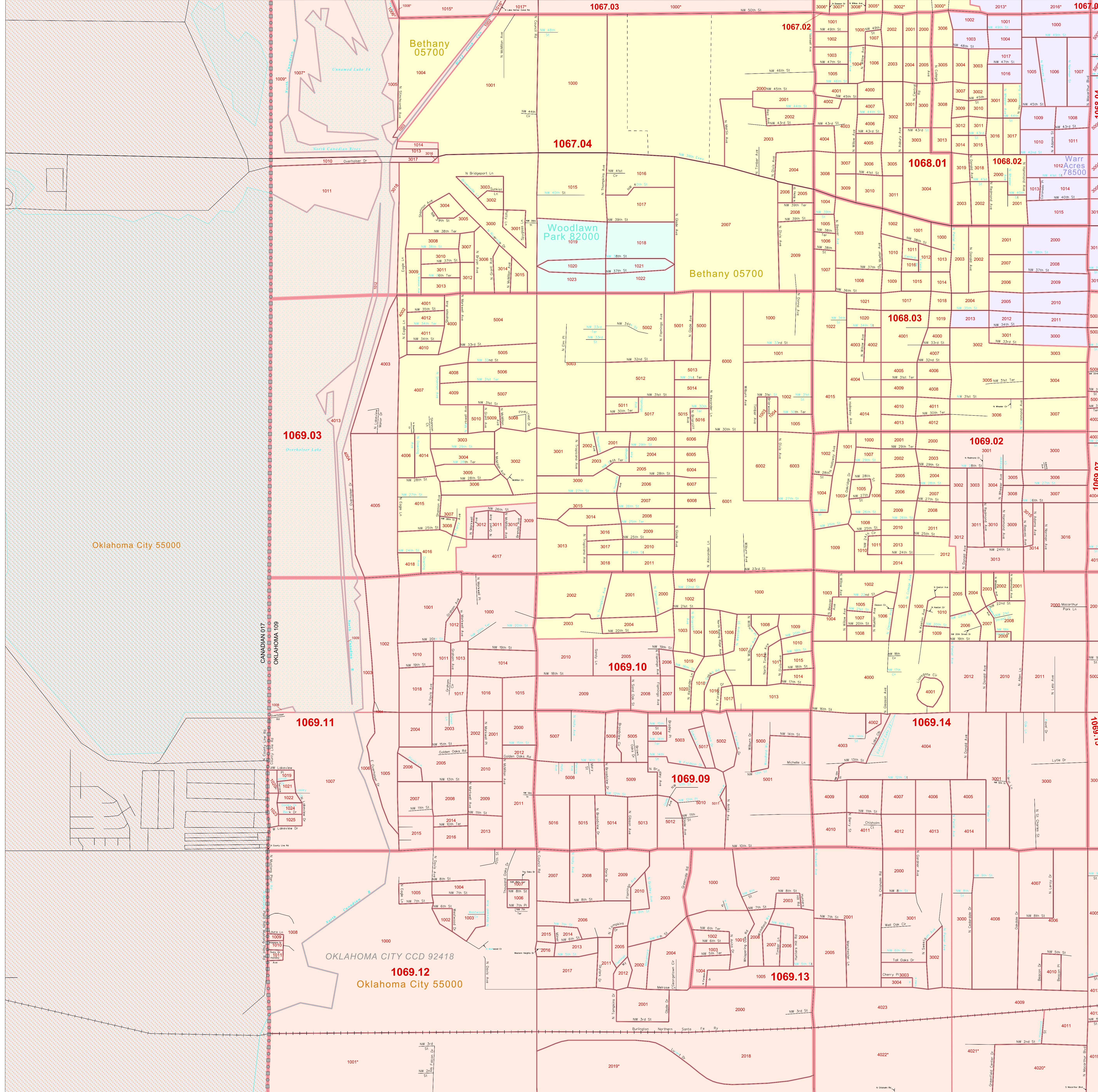


CENSUS 2000 BLOCK MAP: OKLAHOMA County

35 523000N
97 686182W

35 523000N
97 686182W



LEGEND

SYMBOL NAME STYLE

- INTERNATIONAL
- AIR (FEDERAL)
- Trust Land / Home Land
- OTSA / TDSA / ANVSA
- AMERICAN INDIAN TRIBAL SUBDIVISION
- AIR (State)
- SDA/ISA
- ANRC
- STATE (or statistically equivalent entity)
- COUNTY (or statistically equivalent entity)
- MINOR CIVIL DIV. / CCD¹
- Consolidated City
- Place within Subject Entity
- Incorporated Place / CDP¹
- Place outside of Subject Entity
- Incorporated Place / CDP¹
- Corporate Offset Boundary
- Census Tract**
- Block²**

ABBREVIATION REFERENCE: AIR = American Indian Reservation; Trust Land = Off-Reservation Trust Land; Home Land = Bavejian Home Land; OTSA = Oklahoma Tribal Statistical Area; TDSA = Tribal Designated Statistical Area; ANVSA = Alaska Native Village Statistical Area; SDA/ISA = State Designated American Indian Statistical Area; ANRC = Alaska Native Regional Corporation; CDP = Census Designated Place; Minor Civil Div. (MCD) = Minor Civil Division; CCD = Census County Division

FEATURES

- Highway
- Pipe/Power Line
- Stream/Shoreline
- Secondary Road
- Ridge/Physical Feature
- Intermittent Stream
- Deep Trench/Canal/Ferry
- Property/Fence Line
- River/Lake
- Railroad
- Nonvisible Boundary
- Creeper

Where international, state, and/or county boundaries coincide, the map shows the boundary symbol for only the highest-ranking of these boundaries.
¹ A " " following a place name indicates that the place is coextensive with a MCD. A " " indicates that the place is also a false MCD; the false MCD name is not shown.
² A " " following a block number indicates that the block number is repeated elsewhere in the block.

Inset **Out Area**

Key to Adjacent Sheets

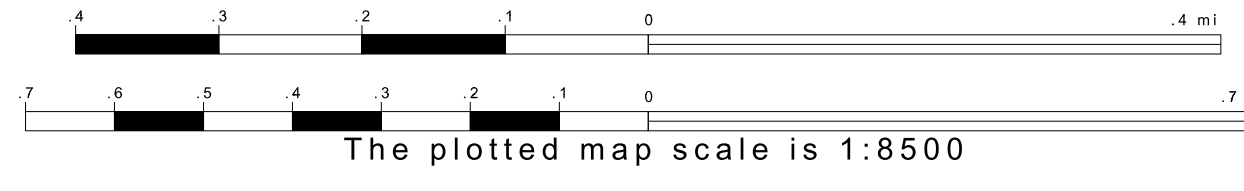
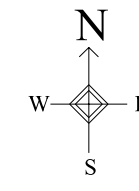
25	26
33	34
41	42

Sheet Location within Entity

SHEET 33 OF 56 PARENT SHEETS
 TOTAL SHEETS: 62 (Index 1; Parent 56; Inset 5)

35 523000N
97 686182W

35 523000N
97 686182W



ENTITY TYPE: County
 NAME: Oklahoma County (109)
 ST: Oklahoma (40)

All legal boundaries and names are as of January 1, 2000. The boundaries shown on this map are for Census Bureau statistical data collection and tabulation purposes only; their depiction and designation for statistical purposes does not constitute a determination of jurisdictional authority or rights of ownership or entitlement. Source: U.S. Census Bureau's TIGER database (Census 2000) Projection: State-based Albers' Equal Area U.S. DEPARTMENT OF COMMERCE Economics and Statistics Administration U.S. Census Bureau

