

1990 CENSUS TRACT/BNA OUTLINE MAP (RECREATED)

36 252148N  
106 606286W

36 252148N  
105 947222W

LEGEND

- | SYMBOL | NAME STYLE                            |
|--------|---------------------------------------|
| *****  | INTERNATIONAL                         |
| *****  | AIR                                   |
| *****  | Trust Land                            |
| *****  | TJSA / TDSA / ANVSA                   |
| *****  | ANRC                                  |
|        | MINOR CIVIL DIV <sup>1</sup> / CCD    |
| -----  | Place within Subject Entity           |
| -----  | Incorporated Place / CDP <sup>1</sup> |
| -----  | Place outside of Subject Entity       |
| -----  | Incorporated Place / CDP <sup>1</sup> |
| -----  | Census Tract / BNA <sup>2</sup>       |

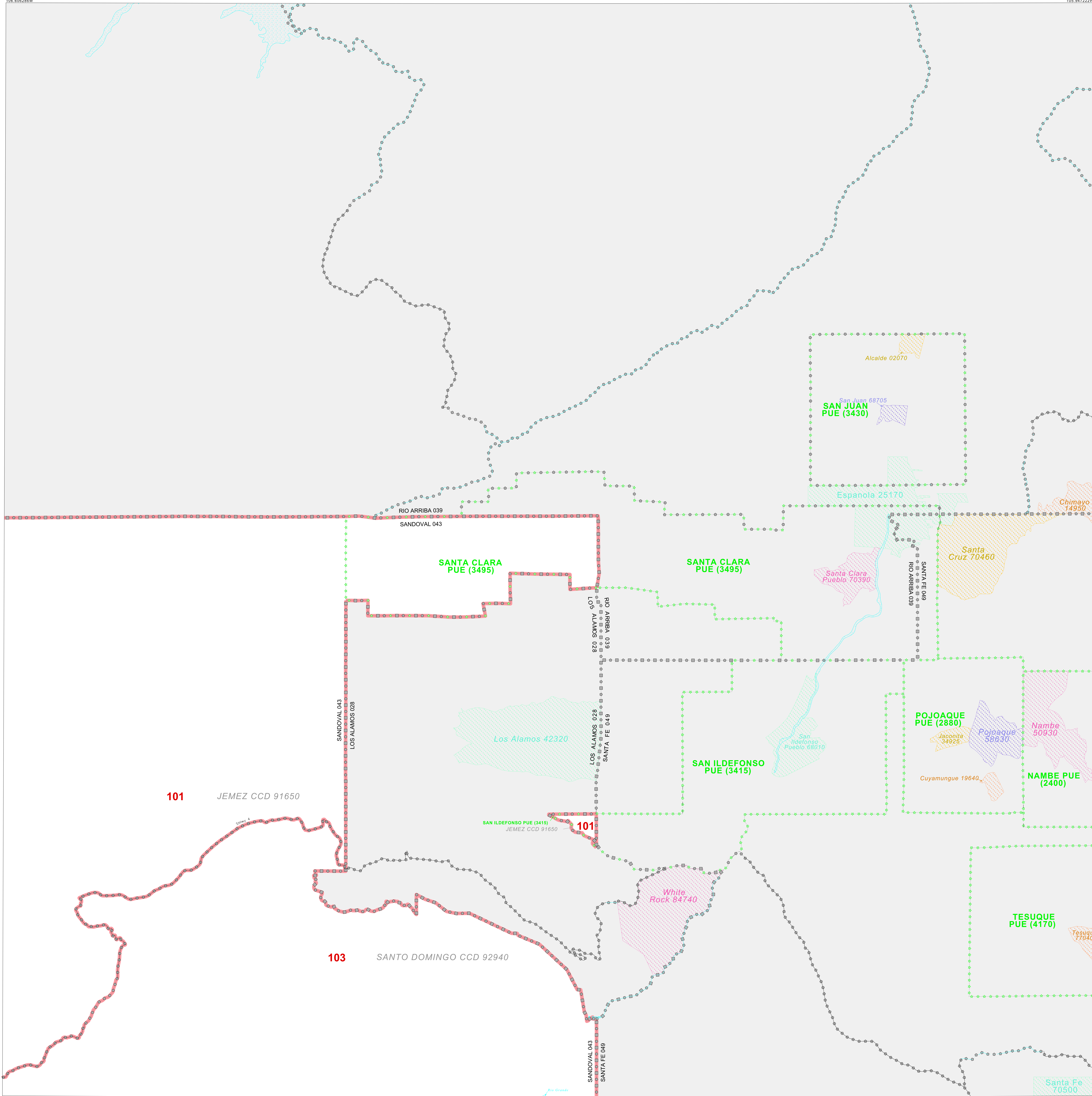
ABBREVIATION REFERENCE: AIR - American Indian Reservation;  
Trust Land - GIP-Reservation Trust Land, TDSA - Tribal Jurisdiction  
Statistical Area, TDSA - Tribal Designated Statistical Area;  
ANVSA - Alaska Native Village Statistical Area, ANRC - Alaska Native  
Regional Corporation, CCD - Census Civil Division;  
CDP - Census Designated Place; BNA - Block Numbering Area

FEATURES

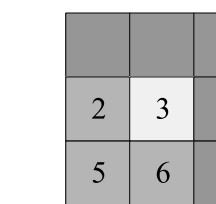
- |                  |                    |
|------------------|--------------------|
| All Roads        | Stream/Shoreline   |
| Railroad         | Canal/Levee/Stream |
| Pipe/Flag Line   | Wetland            |
| Physical Feature | Plaque             |
| Natural Boundary |                    |

Inset Out Area

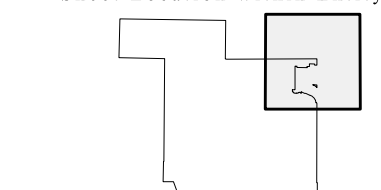
Where international, state, and/or county boundaries coincide, the map shows the boundary symbol for only the highest-ranking of these boundaries.  
1 A "1" following a place name indicates that the place is also a false MCD.  
2 In 1990, the census-90 census population of ships at sea was allocated to census tracts with a "99" suffix. An such symbol appeared on the 1990 maps locating a census tract. These maps show a very small area symbolized as a census tract with the census tract number shown near the area.



Key to Adjacent Sheets



Sheet Location within Entity



SHEET 3 OF 6 PARENT SHEETS  
TOTAL SHEETS: 9 (Index 1; Parent 6; Inset 2)

ENTITY TYPE: County  
NAME: Sandoval County (043)  
ST: New Mexico (35)

1990 CENSUS TRACT/BNA OUTLINE MAP (RECREATED)  
(PWRTR) 19135043003000000000

All legal boundaries and names are as of January 1, 1990 as tabulated for the Public Law 94-171 and Summary Tape File products. The boundaries also reflect the feature network and coordinates as of the Census 2000 geographic base. Since 1990 the Census Bureau updated the base from the North American Datum of 1927 (NAD27) to the datum as of 1983 (NAD83) and made numerous updates to the base features from those depicted in 1990. The boundaries shown on this map are for the Census Bureau's statistical data collection and tabulation purposes only; their depiction and designation for statistical purposes does not constitute a determination of jurisdictional authority or rights or ownership or entitlement. Source: U.S. Census Bureau's TIGER database (Census 2000) Projection: State-based Albers's Equal Area U.S. DEPARTMENT OF COMMERCE Economics and Statistics Administration U.S. Census Bureau

