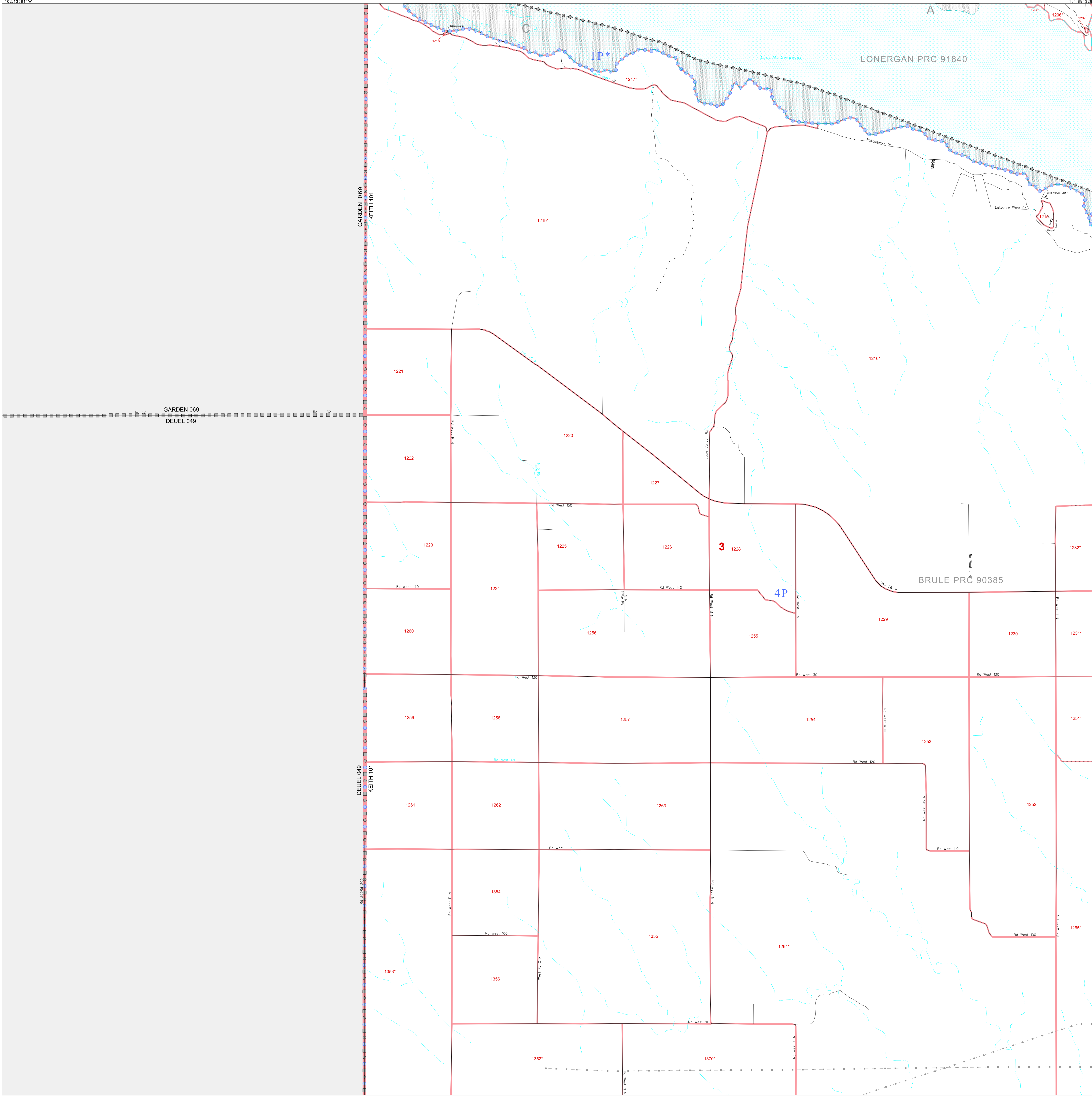


P.L. 94-171 COUNTY BLOCK MAP (CENSUS 2000)

41 290300N  
102 135811W

41 290300N  
101 894328W



**GEOGRAPHIC AREAS LEGEND**

SYMBOL	NAME STYLE
*****	<b>INTERNATIONAL</b>
*****	<b>AIR (FEDERAL)</b>
*****	<b>Trust Land</b>
*****	TRIBAL SUBDIVISION
//////	STATE
	COUNTY
-----	MINOR CIVIL DIV <sup>1</sup>
-----	Incorporated Place <sup>1</sup>
-----	Census Designated Place <sup>1</sup>
-----	Corporate Offset Boundary
.....	Voting District <sup>2</sup>
-----	Census Tract
-----	BLOCK <sup>3</sup>
-----	Military
-----	Inset
-----	Out Area

Abbreviation Reference: AIR = American Indian Reservation; Trust Land = OTL; Reservation Trust Land; Tribal Subdivision = American Indian Tribal Subdivision

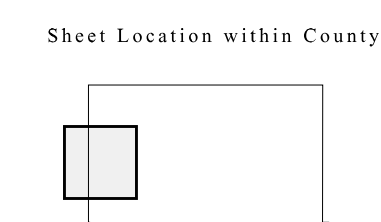
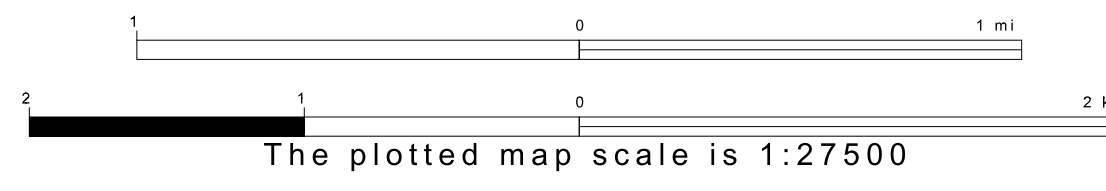
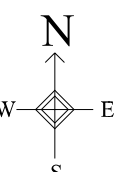
1 A \* \* following a place name indicates that the place is consecutive with a MCD. A \* \* indicates that the place is also a false MCD. In both cases, the MCD name is shown only when it differs from the place name.

2 A \* \* following a VTD code indicates an actual voting district. Its absence indicates that the VTD is a pseudo voting district or no information is available as to its status.

3 A \* \* following a block number indicates that the block number is repeated elsewhere in the block.

41 107901N  
102 135811W

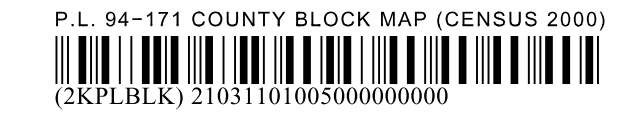
41 107901N  
101 894328W



Key to Adjacent Sheets

1	2
5	6
9	10

ST: Nebraska (31)  
COU: Keith (101)  
SHEET 5 OF 12 PARENT SHEETS



All legal boundaries and names are as of January 1, 2000. The boundaries shown on this map are for Census Bureau statistical data collection and tabulation purposes only; their depiction and designation for statistical purposes does not constitute a determination of jurisdictional authority or rights of ownership or entitlement. U.S. DEPARTMENT OF COMMERCE Economics and Statistics Administration U.S. Census Bureau