

P.L. 94-171 COUNTY BLOCK MAP (CENSUS 2000)

47 265893N
97 132888W

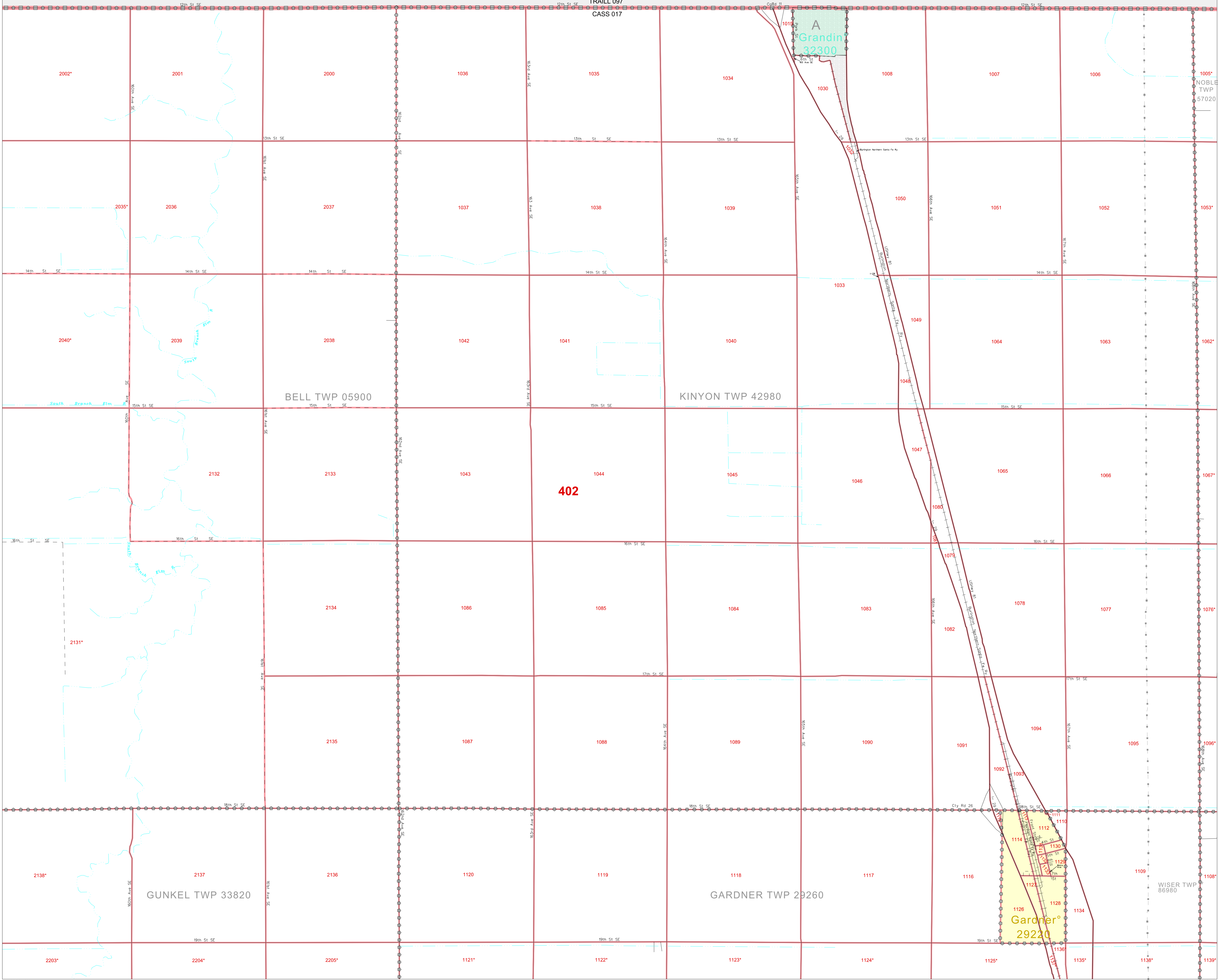
47 265893N
96 939531W

GEOGRAPHIC AREAS LEGEND

SYMBOL	NAME STYLE
*****	INTERNATIONAL
*****	AIR (FEDERAL)
*****	Trust Land
*****	TRIBAL SUBDIVISION
//////	STATE
	COUNTY
-----	MINOR CIVIL DIV. ¹
-----	Incorporated Place ¹
-----	Census Designated Place ¹
-----	Corporate Offset Boundary
-----	Census Tract
-----	BLOCK ²

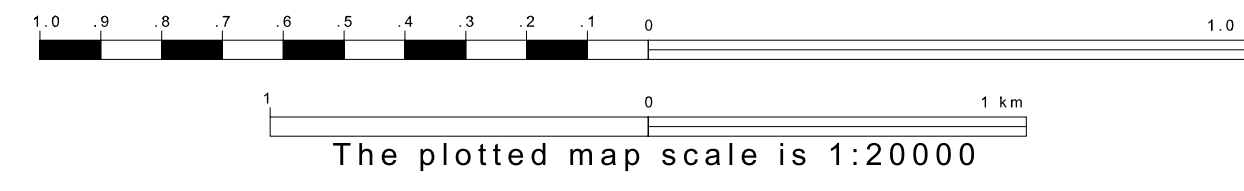
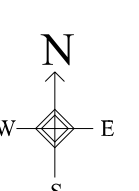
Maturity: Inset Out Area

Abbreviation Reference: AIR = American Indian Reservation; Trust Land = GTR-Reservation Trust Land; Tribal Subdivision = American Indian Tribal Subdivision
¹ A "*" following a place name indicates that the place is coextensive with a MCD. A "-" indicates that the place is also a false MCD. In both cases, the MCD name is shown only where it differs from the place name.
² A "*" following a block number indicates that the block number is repeated elsewhere in the block.

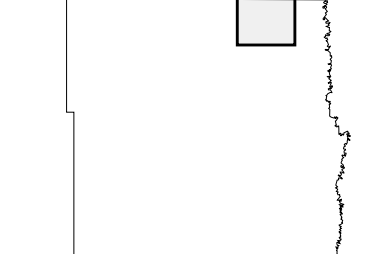


47 133374N
97 132888W

47 133374N
96 939531W



Sheet Location within County



Key to Adjacent Sheets

3	4	5
8	9	10

ST: North Dakota (38)
 COU: Cass (017)
 SHEET 4 OF 25 PARENT SHEETS

