

P. L. 94-171 COUNTY BLOCK MAP (CENSUS 2000)

46 452723N
100 401665W

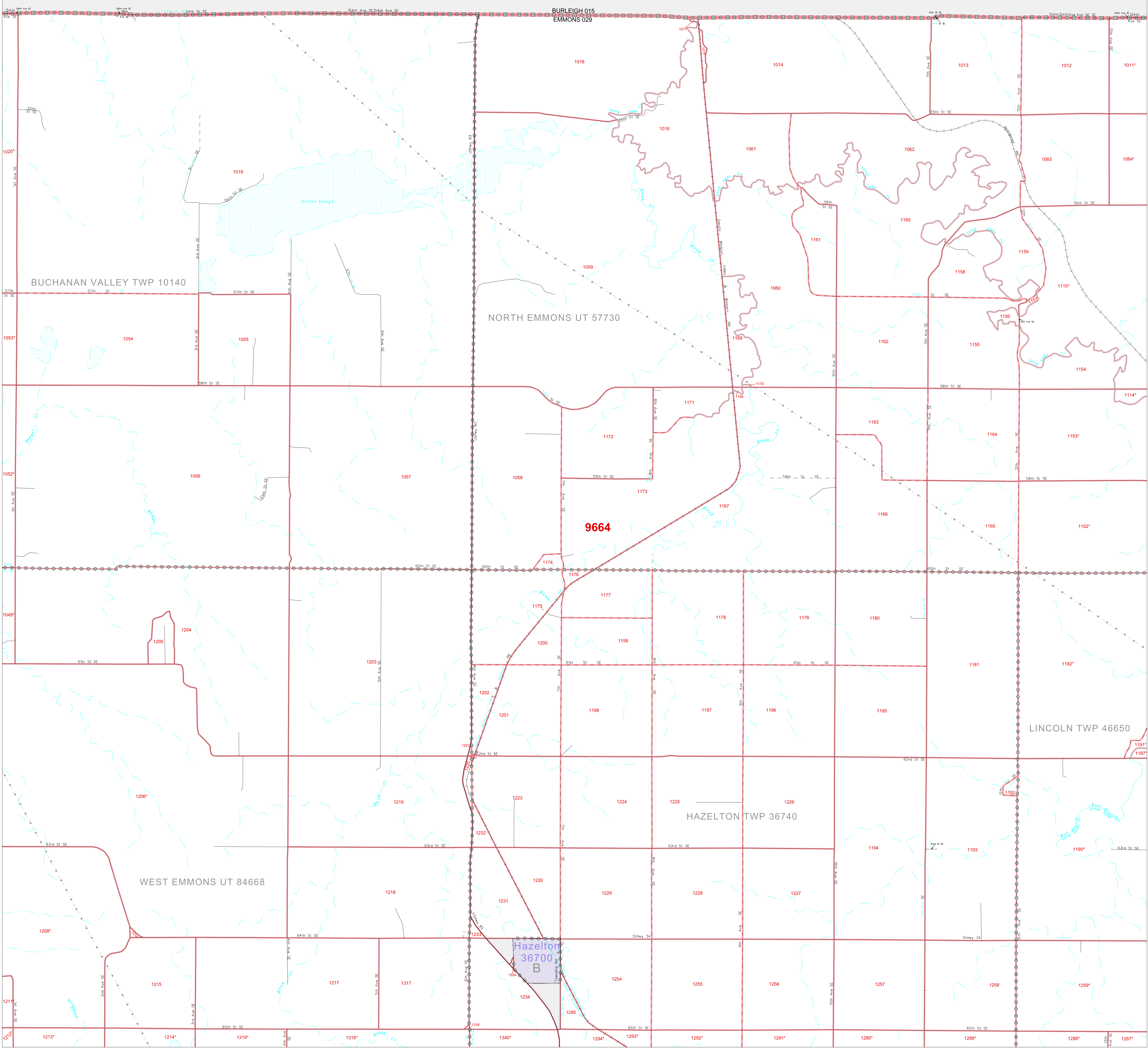
46 452723N
100 138807W

GEOGRAPHIC AREAS LEGEND

SYMBOL	NAME STYLE
*****	INTERNATIONAL
*****	AIR (FEDERAL) Trust Land
*****	TRIBAL SUBDIVISION
//////	STATE
■■■■■	COUNTY
●●●●●	MINOR CIVIL DIV. ¹
■■■■■	Incorporated Place ¹
■■■■■	Census Designated Place ¹
-----	Corporate Offset Boundary
-----	Census Tract
-----	BLOCK ²

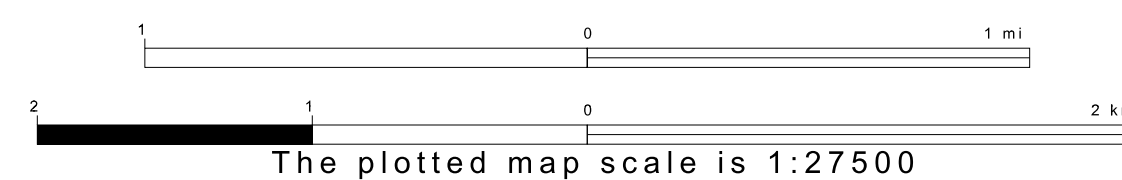
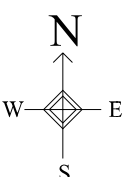
Abbreviation Reference: AIR = American Indian Reservation; Trust Land = Off-Reservation Trust Land; Tribal Subdivision = American Indian Tribal Subdivision

1 A " " following a place name indicates that the place is coextensive with a MCD. A " " indicates that the place is also a false MCD. In both cases, the MCD name is shown only when it differs from the place name.
2 A " " following a block number indicates that the block number is repeated elsewhere in the block.

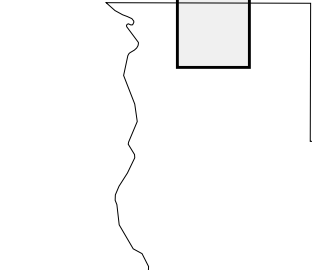


46 470488N
100 401665W

46 470488N
100 138807W



Sheet Location within County



Key to Adjacent Sheets

1	2	3
4	5	6

ST: North Dakota (38)
COU: Emmons (029)
SHEET 2 OF 12 PARENT SHEETS



All legal boundaries and names are as of January 1, 2000. The boundaries shown on this map are for Census Bureau statistical data collection and tabulation purposes only; their depiction and designation for statistical purposes does not constitute a determination of jurisdictional authority or rights of ownership or entitlement. U.S. DEPARTMENT OF COMMERCE Economics and Statistics Administration U.S. Census Bureau