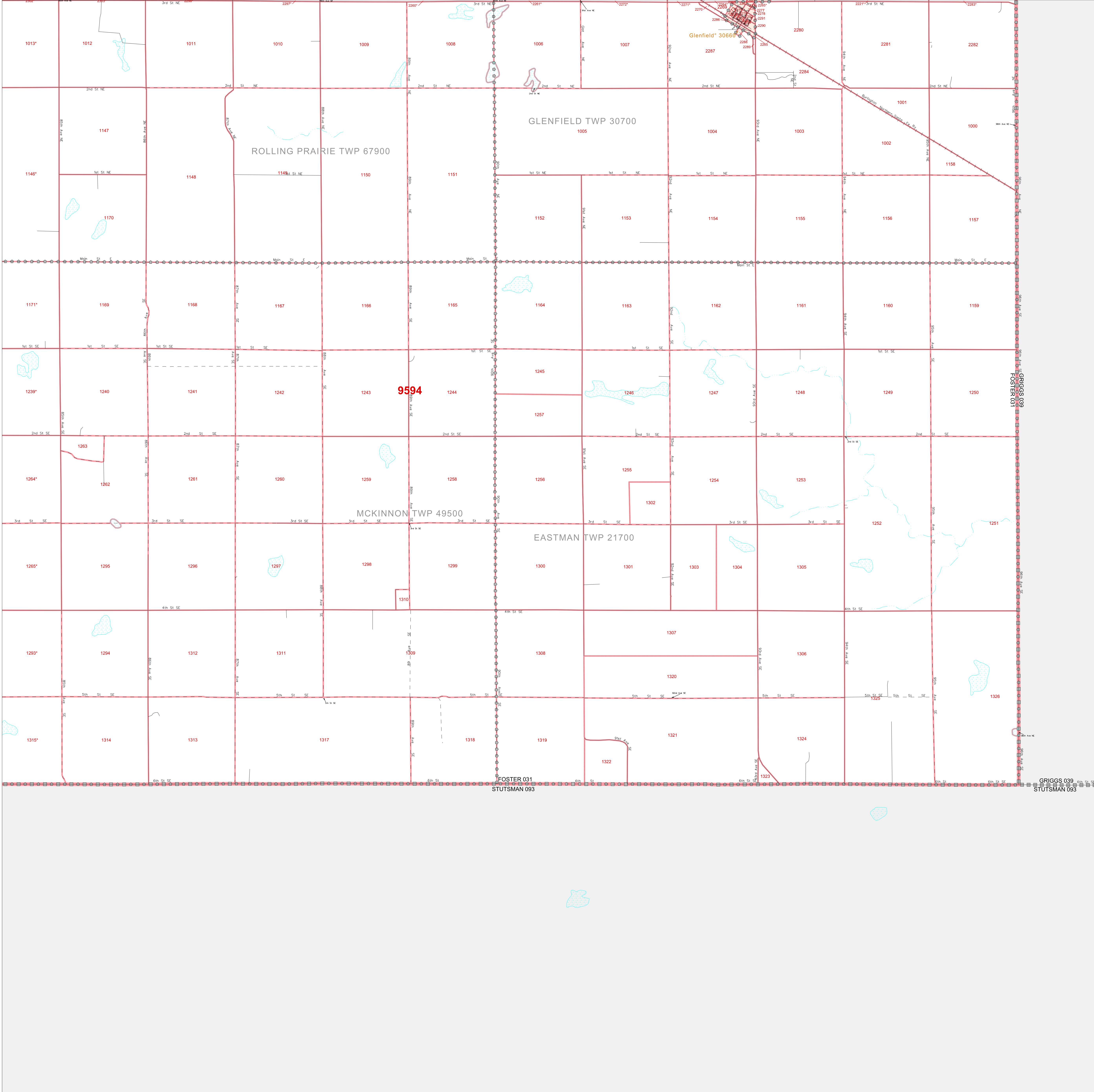


P. L. 94-171 COUNTY BLOCK MAP (CENSUS 2000)

47 457214N
98.748495W

47 457214N
98.748495W



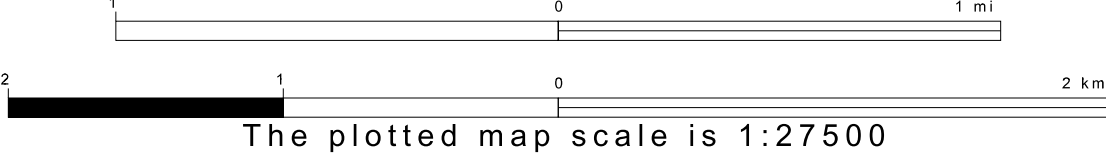
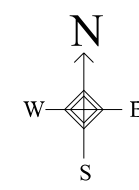
GEOGRAPHIC AREAS LEGEND

SYMBOL	NAME STYLE
*****	INTERNATIONAL
*****	AIR (FEDERAL)
*****	Trust Land
*****	TRIBAL SUBDIVISION
-----	STATE
-----	COUNTY
-----	MINOR CIVIL DIV ¹
-----	Incorporated Place ¹
-----	Census Designated Place ¹
-----	Corporate Offset Boundary
-----	Census Tract
-----	BLOCK ²

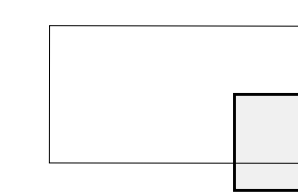
Abbreviation Reference: AIR = American Indian Reservation; Trust Land = Off-Reservation Trust Land; Tribal Subdivision = American Indian Tribal Subdivision
 1 A " " following a place name indicates that the place is coterminous with a MCD. A " " indicates that the place is also a false MCD. In both cases, the MCD name is shown only when it differs from the place name.
 2 A " " following a block number indicates that the block number is repeated elsewhere in the block.

47 275018N
98.748495W

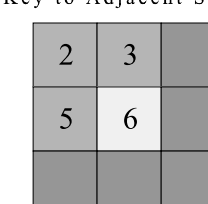
47 275018N
98.748495W



Sheet Location within County



Key to Adjacent Sheets



ST: North Dakota (38)
 COU: Foster (031)
 SHEET 6 OF 6 PARENT SHEETS

