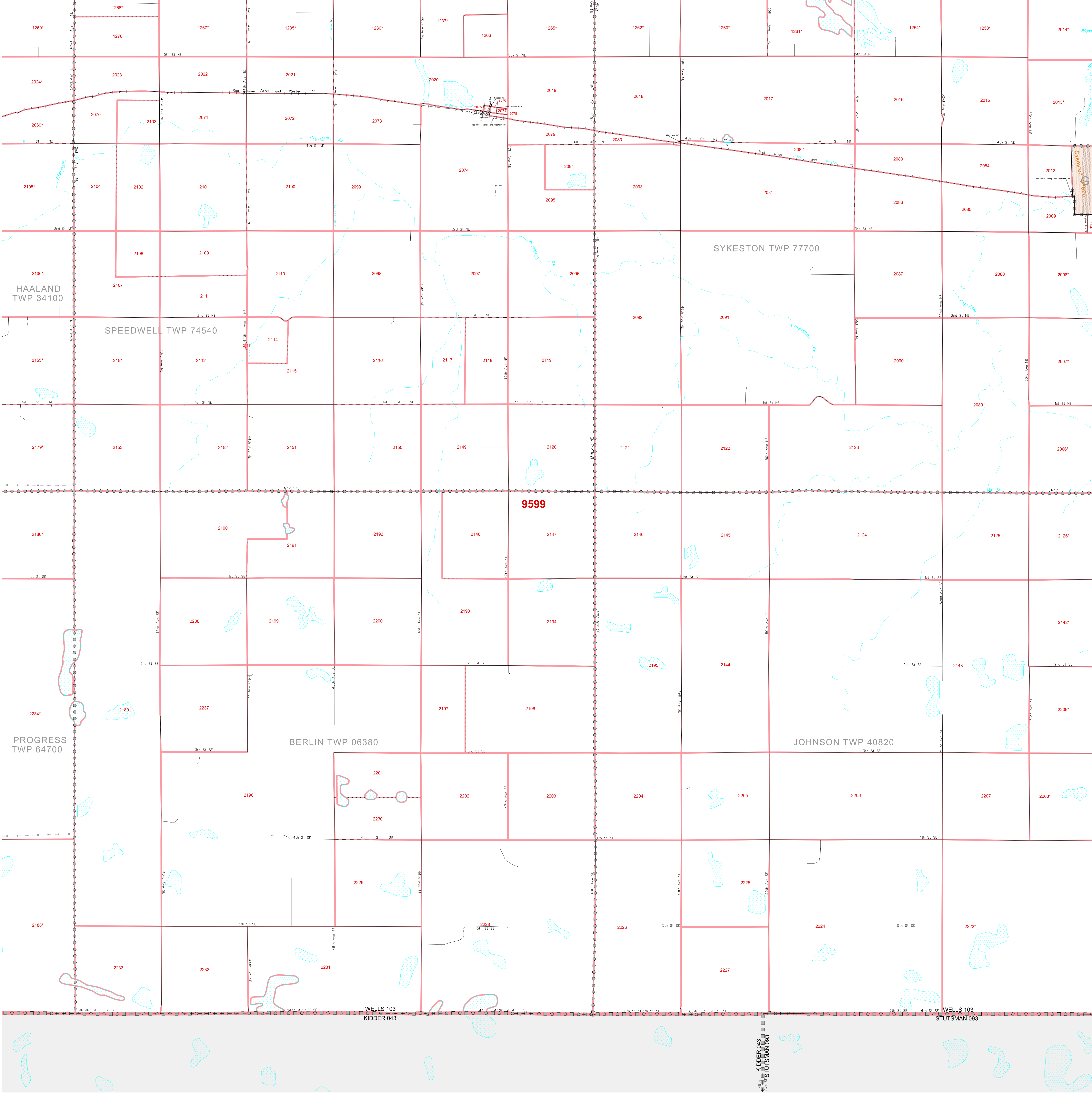


P. L. 94-171 COUNTY BLOCK MAP (CENSUS 2000)

47 496277N
99.66737W

47 496277N
99.398443W



GEOGRAPHIC AREAS LEGEND

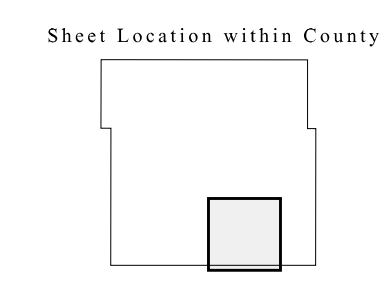
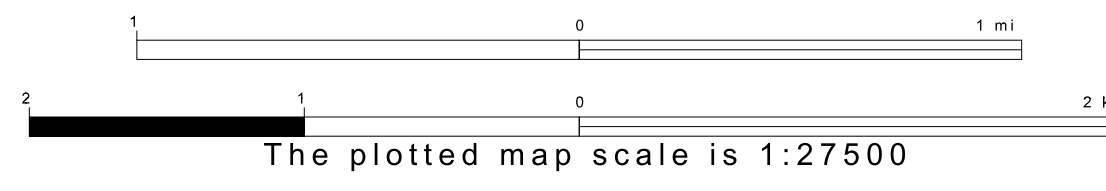
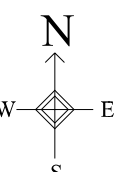
SYMBOL	NAME STYLE
*****	INTERNATIONAL
*****	AIR (FEDERAL)
*****	Trust Land
*****	TRIBAL SUBDIVISION
-----	STATE
-----	COUNTY
-----	MINOR CIVIL DIV ¹
-----	Incorporated Place ¹
-----	Census Designated Place ¹
-----	Corporate Offset Boundary
-----	Census Tract
-----	BLOCK ²

Mooted Inset Out Area

Abbreviation Reference: AIR = American Indian Reservation; Trust Land = GTR-Reservation Trust Land; Tribal Subdivision = American Indian Tribal Subdivision
¹ A " " following a place name indicates that the place is coterminous with a MCD. A " " indicates that the place is also a false MCD. In both cases, the MCD name is shown only when it differs from the place name.
² A " " following a block number indicates that the block number is repeated elsewhere in the block.

47 314085N
99.66737W

47 314085N
99.398443W



Key to Adjacent Sheets

6	7	8
10	11	12

ST: North Dakota (38)
 COU: Wells (103)
 SHEET 11 OF 12 PARENT SHEETS



All legal boundaries and names are as of January 1, 2000. The boundaries shown on this map are for Census Bureau statistical data collection and tabulation purposes only; their depiction and designation for statistical purposes does not constitute a determination of jurisdictional authority or rights of ownership or entitlement. U.S. DEPARTMENT OF COMMERCE Economics and Statistics Administration U.S. Census Bureau