

CENSUS TRACT OUTLINE MAP (CENSUS 2000)

ABBREVIATED LEGEND

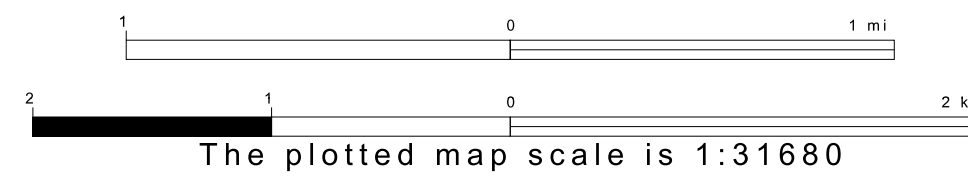
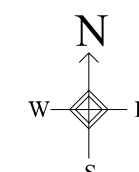
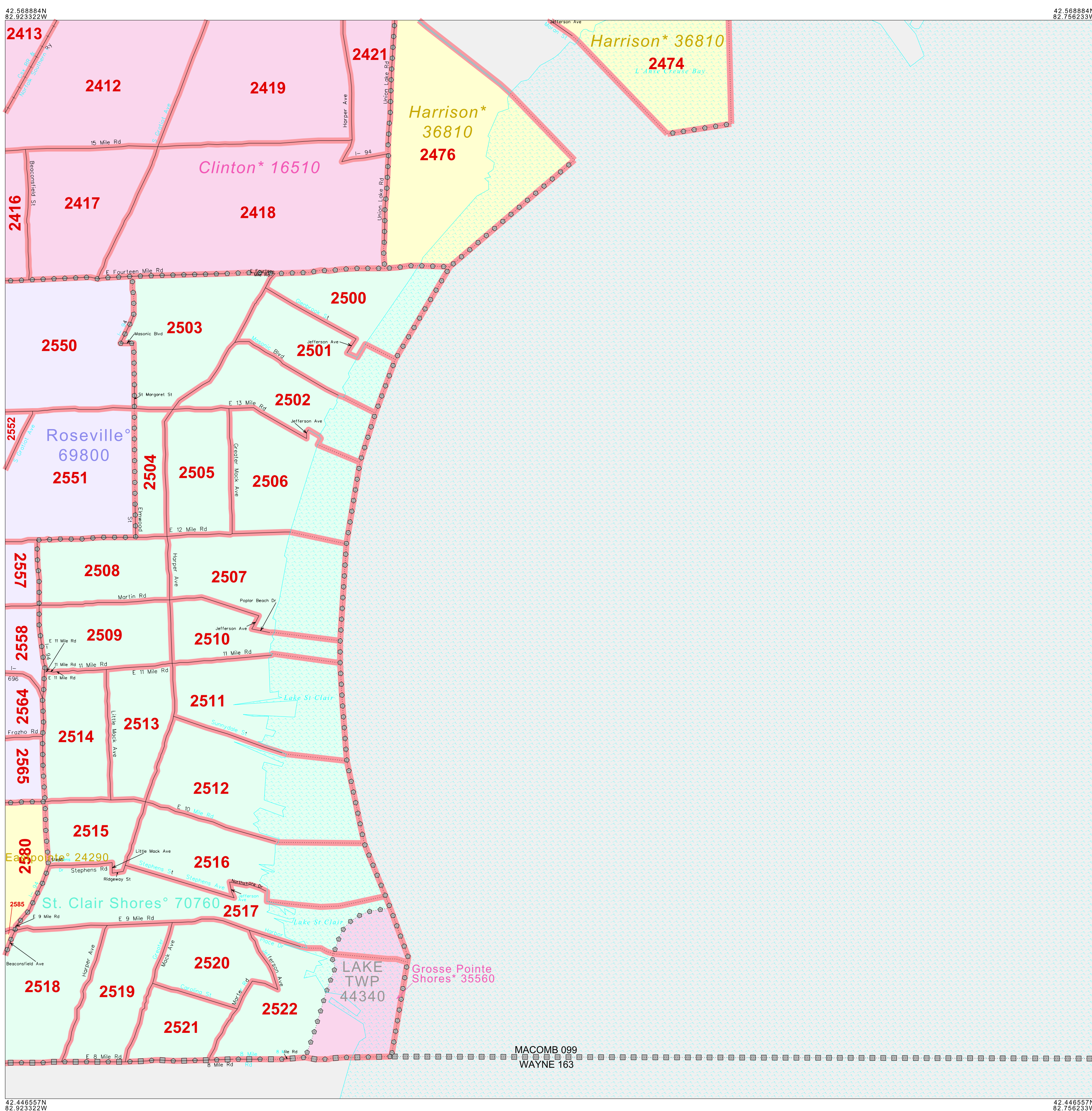
SYMBOL	NAME STYLE
☆☆☆☆	INTERNATIONAL
*****	AIR (FEDERAL)
◆◆◆◆◆	Trust Land
◇◇◇◇◇	OTSA / TDSA
●●●●●	TRIBAL SUBDIVISION
///////	AIR (State)
◇◇◇◇◇	SDA/SA
#####	STATE
■■■■■	COUNTY
○○○○○	MINOR CIVIL DIV' Consolidated City
■■■■■	Incorporated Place'
■■■■■	Census Designated Place'
■■■■■	Census Tract

Abbreviation Reference: AIR = American Indian Reservation; Trust Land = OTF-Reservation Trust Land; OTSA = Oklahoma Tribal Statistical Area; TDSA = Tribal Designated Statistical Area; Tribal Subdivision = American Indian Tribal Subdivision; SDA/SA = State Designated American Indian Statistical Area

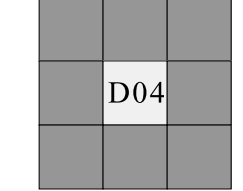
1. A "*" following a place name indicates that the place is contiguous with a MCD. A "-" indicates that the place is also a false MCD. In both cases, the MCD name is shown only when it differs from the place name.

FEATURES	FEATURES
All Roads	Stream/Shoeline
Railroad	Intermittent Stream
Pipe/Pipe Line	River/Lake
Physical Feature	Glacier
Nonvisible Boundary	

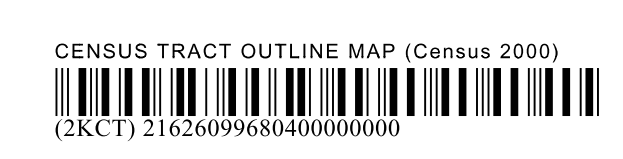
Military Inset Out Area



Key to Adjacent Sheets



ST: Michigan (26)
COU: Macomb (099)
INSET SHEET D04



All legal boundaries and names are as of January 1, 2000. The boundaries shown on this map are for Census Bureau statistical data collection and tabulation purposes only; their depiction and designation for statistical purposes does not constitute a determination of jurisdictional authority or rights of ownership or entitlement. U.S. DEPARTMENT OF COMMERCE Economics and Statistics Administration U.S. Census Bureau